

THIS MAP WAS PREPARED FOR ASSESSMENT PURPOSE ONLY

Upper Left:  
123°19'52"W 43°17'59"N  
4166788E 577524N FT

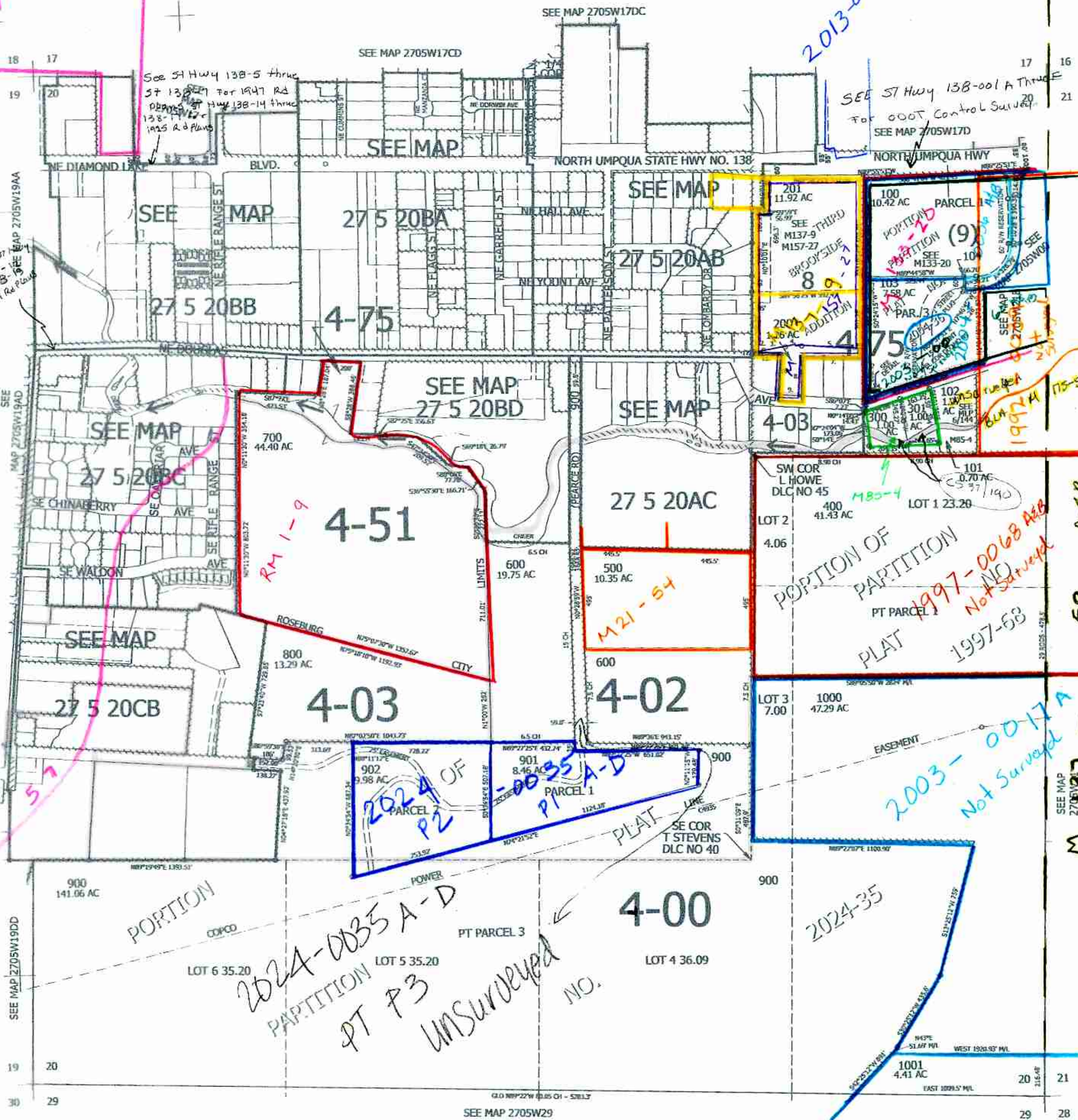
SEC.20 T.27S. R.05W. W.M.  
DOUGLAS COUNTY  
1" = 400'

Date Exported 2025-01-07

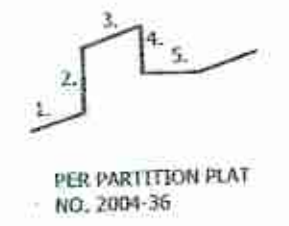
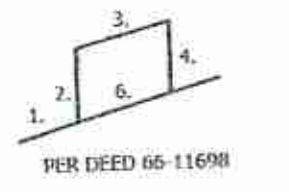
270520  
& INDEX  
Roseburg

CANCELLED NOS:  
100A1 202 999

- PARCEL 103
- 1. 080°57'50"E 13.35'
- 2. LC=886°24'13"E 42.4'
- 3. N01°41'17"E 13.50'
- 4. N08°40'55"E 86.03'
- 5. S84°07'27"W 10.00'
- 6. S71°43'57"W 66.00'
- 7. N04°07'27"W 105.37'
- 8. S1°52'17"W 206.39'
- 9. N02°54'02"W 127.30'
- 10. N07°52'30"E 210.37'
- 11. N08°52'30"E 152.87'
- 12. N2°04'27"E 15.45'



DETAIL PARCEL 103  
NOT TO SCALE



PER DEED 66-1169H  
PER PARTITION PLAT  
NO. 2004-36

M 270517 -  
59 A-30

2003-0017A  
Not Surveyed

2024-0035 A-D  
PART 3  
UNSURVEYED  
NO.

2024-35

RM 11-7  
RM 3-1-57  
RM 1-9  
RM 21-54

2013-0013

386 27  
138-  
138-  
1919 Rd Plans

See St Hwy 138-5 thru  
57 138-5 For 1947 Rd  
Plans St Hwy 138-14 thru  
138-14 Rd Plans  
1925 Rd Plans

SEE ST Hwy 138-001A Thru  
For 000T Control Survey  
SEE MAP 2705W17D

201  
11.92 AC  
SEE ST Hwy 138-001A Thru  
For 000T Control Survey  
SEE MAP 2705W17D

2007  
1.157  
1.157 AC  
ADDITION

2007  
1.157  
1.157 AC  
ADDITION

2007  
1.157  
1.157 AC  
ADDITION

2007  
1.157  
1.157 AC  
ADDITION

2007  
1.157  
1.157 AC  
ADDITION

2007  
1.157  
1.157 AC  
ADDITION

2007  
1.157  
1.157 AC  
ADDITION

2007  
1.157  
1.157 AC  
ADDITION

2007  
1.157  
1.157 AC  
ADDITION

2007  
1.157  
1.157 AC  
ADDITION

2007  
1.157  
1.157 AC  
ADDITION

2007  
1.157  
1.157 AC  
ADDITION

270520  
& INDEX  
Roseburg

Lower Right:  
123°18'3"W 43°11'53"N  
4174637E 570569N FT