

SE1/4 SE1/4 SEC.19 T.27S. R.5W. W.M.  
DOUGLAS COUNTY

REVISED ON  
5-19-22

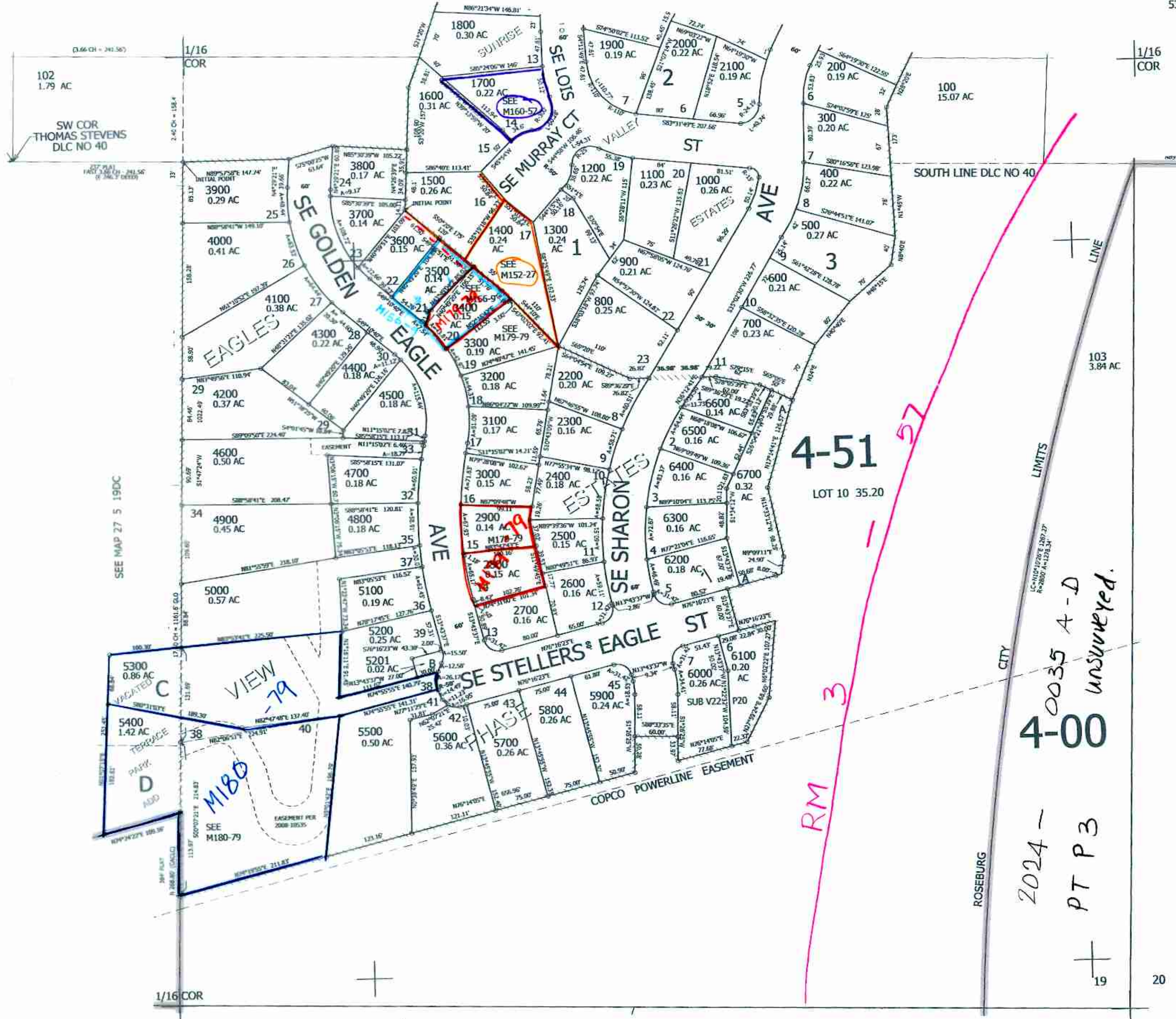
27 5 19DD  
ROSEBURG

THIS MAP WAS PREPARED FOR  
ASSESSMENT PURPOSE ONLY.

1" = 100'

SEE MAP 27 5 19DA

CANCELLED NO'S  
101 799 3501  
5301



SEE MAP 27 5 19DC

SEE MAP 27 5 20

2024 -  
PT P3  
4-0035 A-D  
unsurveyed.

RM 3

4-51  
LOT 10 35.20

VIEW -79  
M180

19

20

30

29

571,500

SEE MAP 27 5 30

4,168,000

5/2022 Or

27 5 19DD  
ROSEBURG