

THIS MAP WAS PREPARED FOR ASSESSMENT PURPOSE ONLY.

NW1/4 SE1/4 SEC.19 T.27S. R.5W. W.M.
DOUGLAS COUNTY
1" = 100'

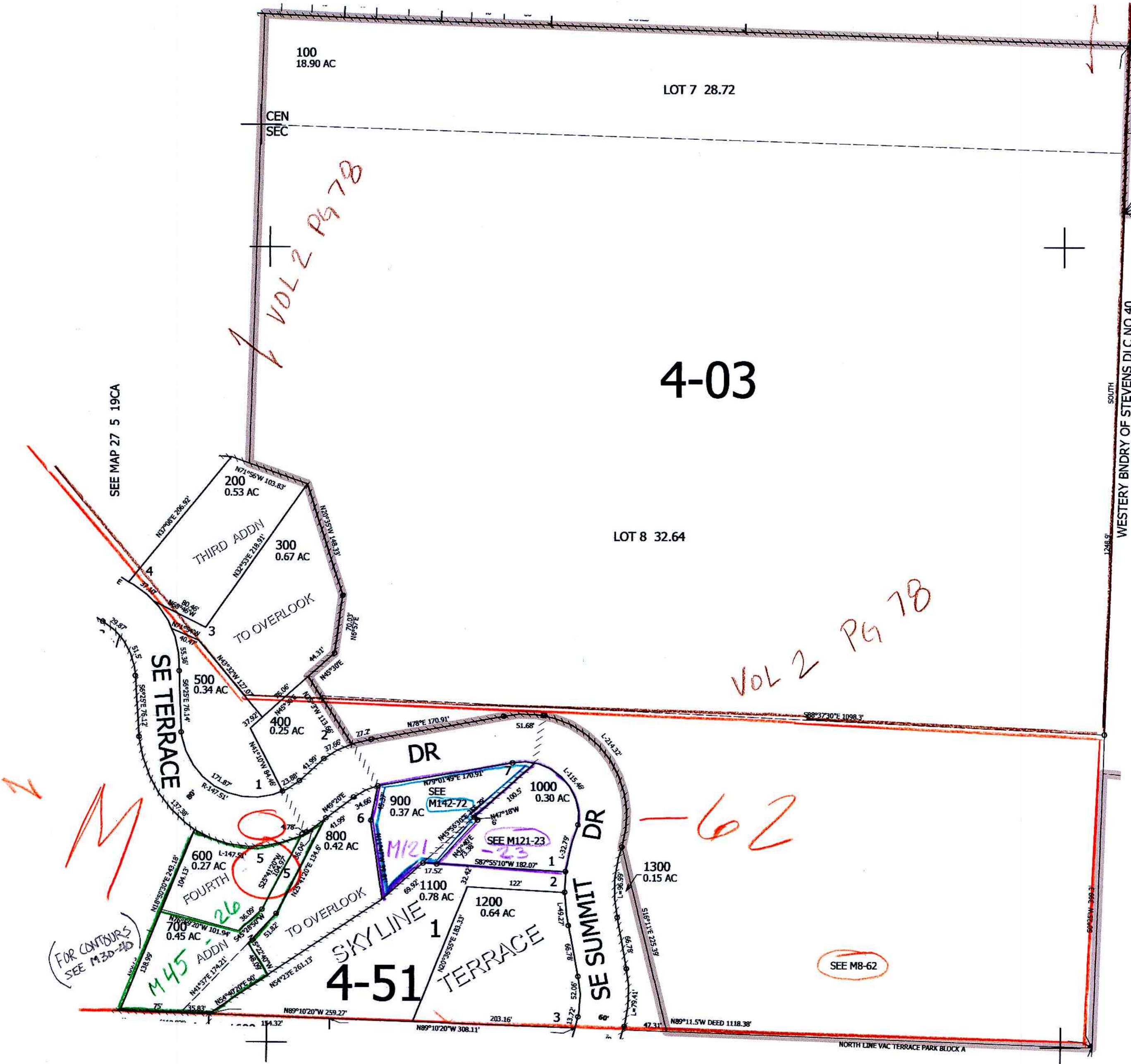
REVISED ON
12-30-19

27 5 19DB
ROSEBURG

SEE MAP 27 5 19AC

CANCELLED NO'S
1001

1/16
COR



SEE MAP 27 5 19DA

573,000

1/16
COR

SEE MAP 27 5 19DC

4,166,500

1-14-2020
1/16
COR
27 5 19DB
ROSEBURG