

NE1/4 SE1/4 SEC. 19 T.27S. R.5W. W.M.
DOUGLAS COUNTY

27 5 19DA
ROSEBURG

THIS MAP WAS PREPARED FOR
ASSESSMENT PURPOSE ONLY.

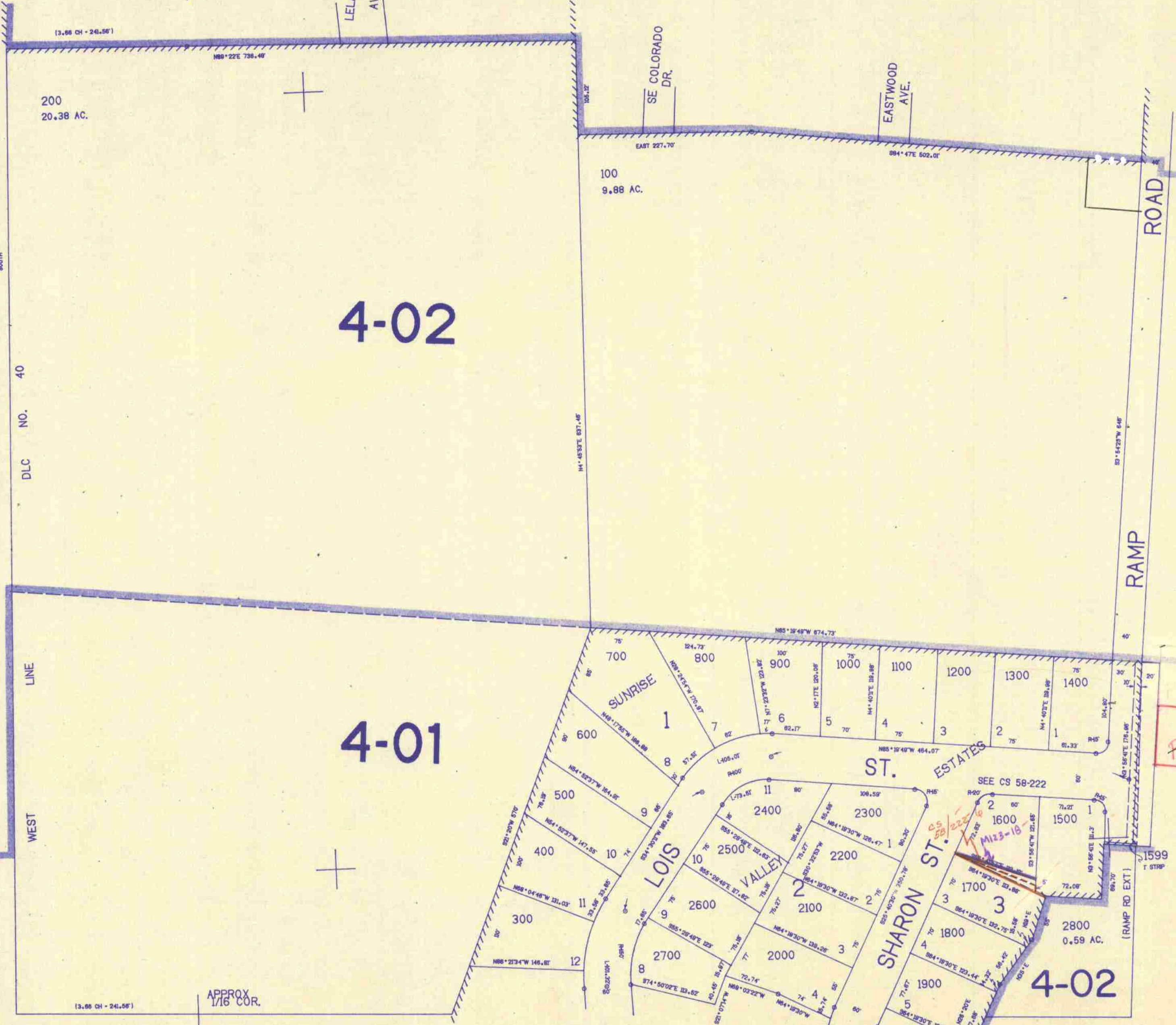
1"=100'

SEE MAP 27 5 19AD

*see V22 P920 D
for sub of
section*
APPROX
1/16 COR.

APPROX
1/4 COR.

*Cancelled
1601
101*



SEE MAP 27 5 19DB

DLC NO. 40

SEE MAP 27 5 20CB

4-02

4-01

*P-22
M69-32*

573.000

APPROX
1/16 COR.

APPROX
1/16 COR.

SEE MAP 27 5 19DD

R.M. 3-57

27 5 19DA
ROSEBURG

1246.000

9/8/21

CONTROL — LAYOUT — TRACED — CHECKED