

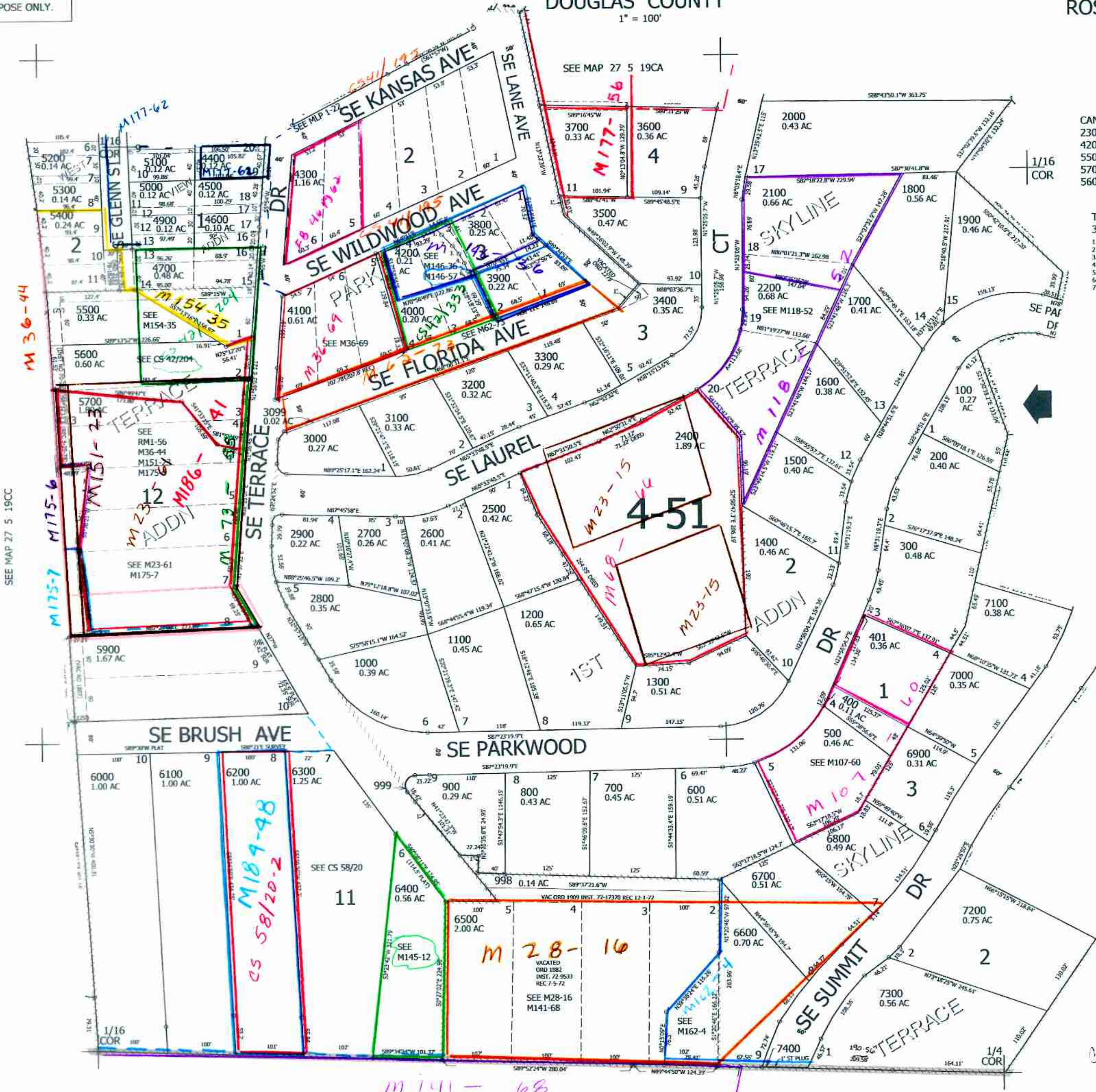
THIS MAP WAS PREPARED FOR ASSESSMENT PURPOSE ONLY.

SE1/4 SW1/4 SEC.19 T.27S. R.5W. W.M.
DOUGLAS COUNTY

REVISED ON
3-3-22

27 5 19CD
ROSEBURG

1" = 100'



CANCELLED NO'S
 2300 2201 3901
 4201 4800 5501
 5502 5601 6501
 5701 5800 5702
 5602 5703

TAXLOTS 3800,
 3900 & 4200
 1. S44°31'19"E 15.53'
 2. S45°28'10"E 22.68'
 3. S41°17'14"E 15.24'
 4. S32°26'39"E 15.37'
 5. S24°07'52"E 12.9'
 6. S28°18'12"E 4.89'
 7. S28°18'13"E 4.88'

SEE MAP 27 5 19CC

SEE MAP 27 5 19DC

572,000

SEE MAP 27 5 30

27 5 19CD
ROSEBURG

CM
2/23/11
scv