

THIS MAP WAS PREPARED FOR
ASSESSMENT PURPOSE ONLY.

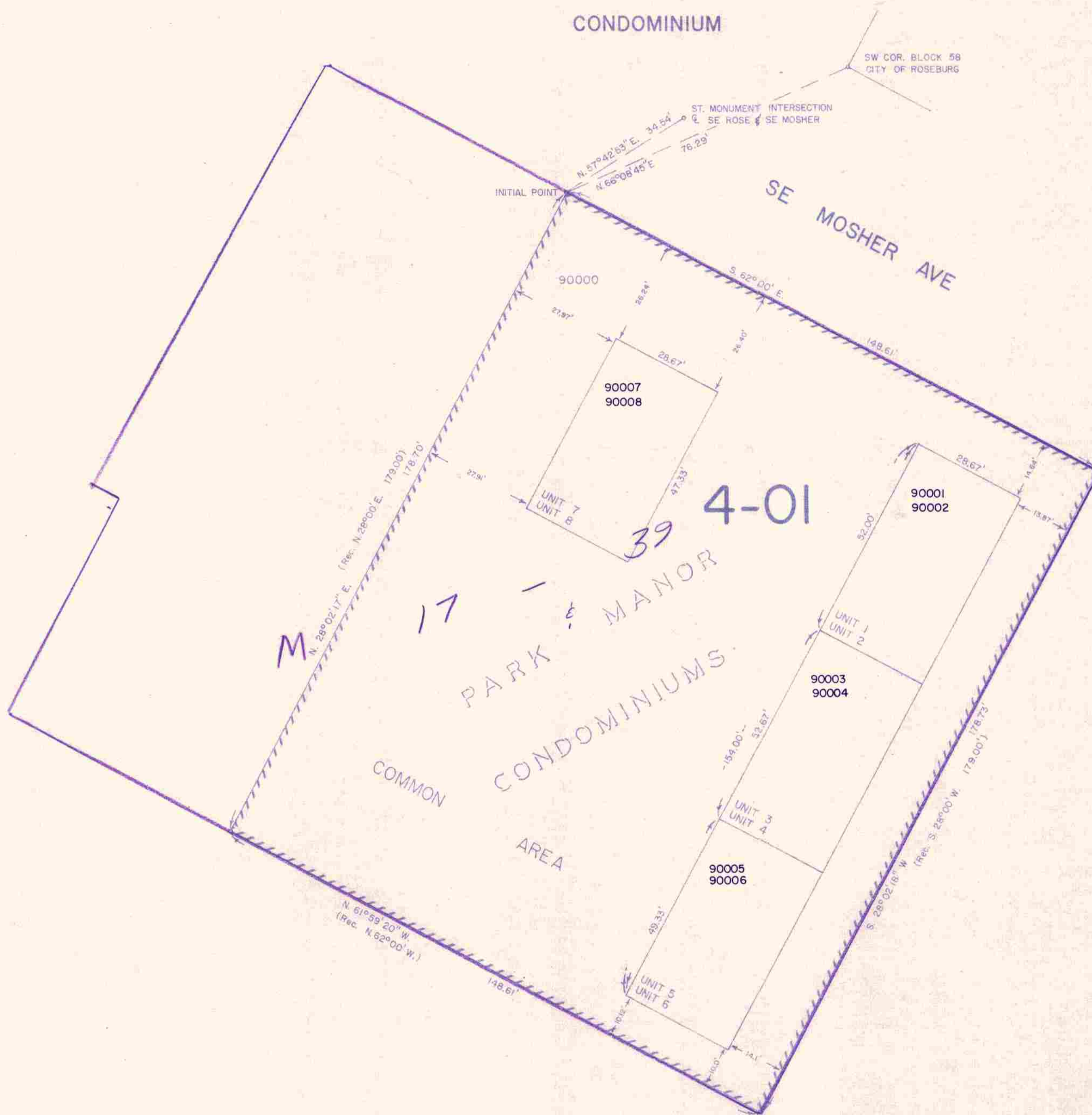
SUPPLEMENTAL MAP NO. 1
IN
NW1/4 SW1/4 SEC. 19 T.27 S. R.5 W. W.M.
DOUGLAS COUNTY

REVISED ON
6-15-92

27 5 19CB
SUPPLEMENTAL
MAP NO. 1

1" = 20'

CONDOMINIUM



27 5 19CB
SUPPLEMENTAL
MAP NO. 1

6/22/92