

SEE MAP 2706W24AA

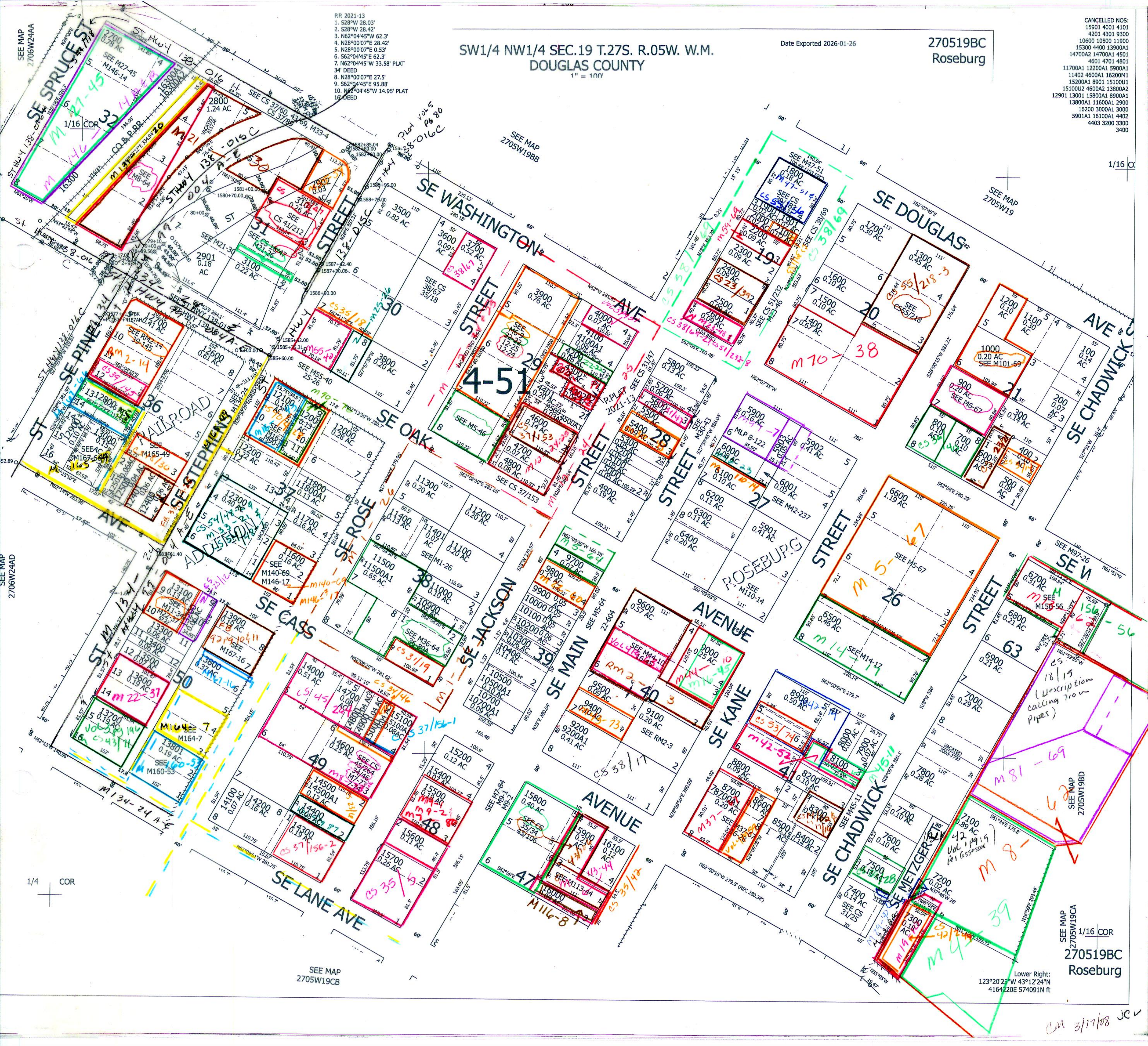
- P.P. 2021-13
- 1. S28°W 28.03'
- 2. S28°W 28.42'
- 3. N62°04'45"W 62.3'
- 4. N28°00'07"E 28.42'
- 5. N28°00'07"E 0.53'
- 6. S62°04'45"E 62.3'
- 7. N62°04'45"W 33.58' PLAT 34' DEED
- 8. N28°00'07"E 27.5'
- 9. S62°04'45"E 95.88'
- 10. N62°04'45"W 14.95' PLAT 16' DEED

SW1/4 NW1/4 SEC.19 T.27S. R.05W. W.M.  
DOUGLAS COUNTY  
1" = 100'

Date Exported 2026-01-26

270519BC  
Roseburg

CANCELLED NOS:  
15901 4001 4101  
4201 4301 9300  
10600 10800 11900  
15300 4400 13900A1  
14700A2 14700A1 4501  
4601 4701 4801  
11700A1 12200A1 5900A1  
11402 4600A1 16200M1  
15200A1 8901 15100U1  
15100U2 4600A2 13800A2  
12901 13001 15800A1 8900A1  
13800A1 11600A1 2900  
16200 3000A1 3000  
5901A1 16100A1 4402  
4403 3200 3300  
3400



1/4 COR

SEE MAP 2705W19CB

Lower Right:  
123°20'25" W 43°12'24" N  
4164.220E 574091N ft

SEE MAP 2705W19CA  
1/16 COR  
270519BC  
Roseburg

am 3/17/08 JC