

THIS MAP WAS PREPARED FOR ASSESSMENT PURPOSE ONLY.

SE1/4 SW1/4 SEC.18 T.27S. R.5W. W.M. DOUGLAS COUNTY

1" = 100'

REVISED ON 4-7-20

27 5 18CD ROSEBURG

SEE MAP 27 5 18CA

CANCELLED NO'S 7000 11801 11802

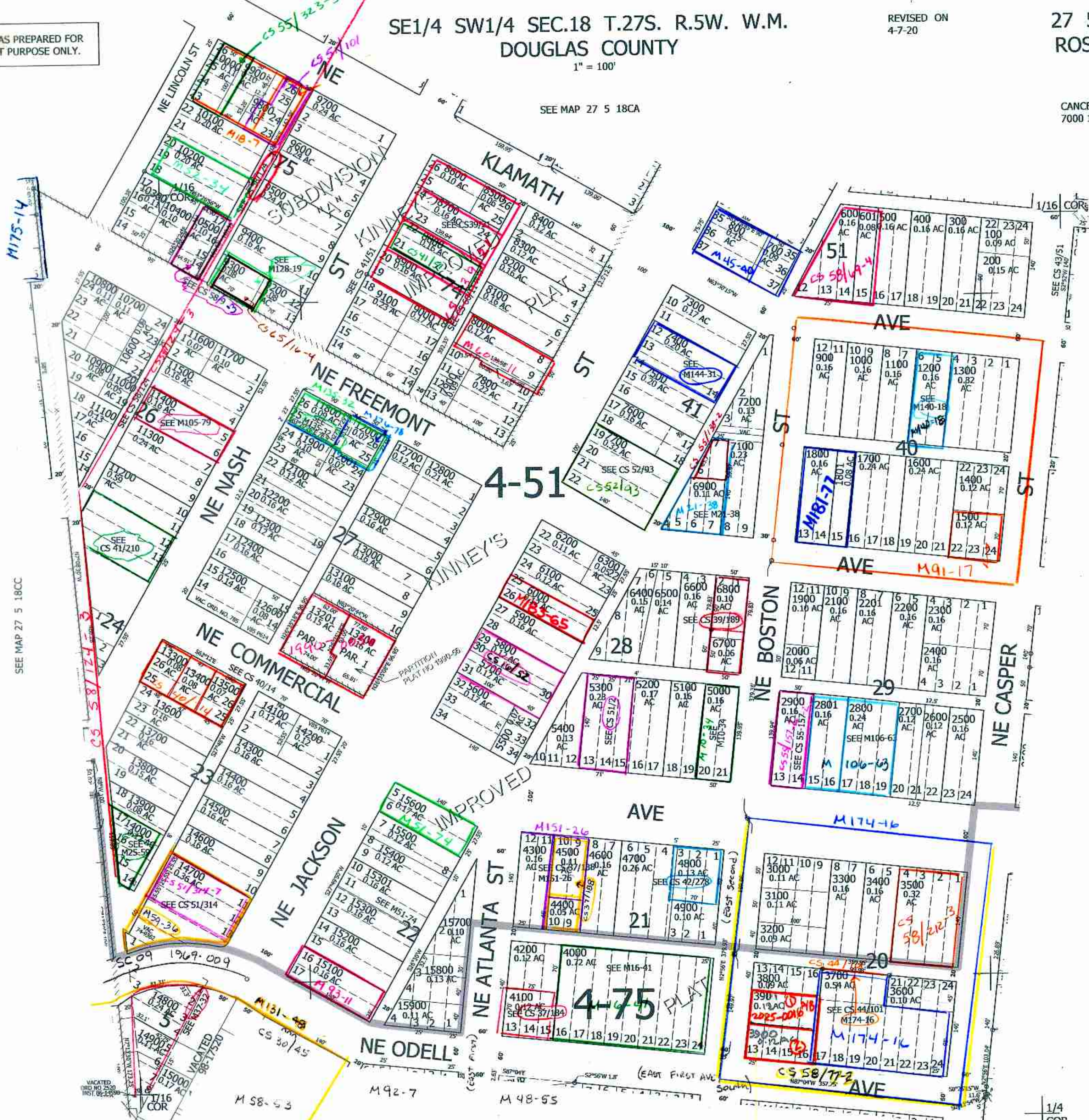
M175-14

SEE MAP 27 5 18CC

SEE MAP 27 5 18DC

577,000

4,165,500



SEE MAP 27 5 19BA

27 5 18CD ROSEBURG