

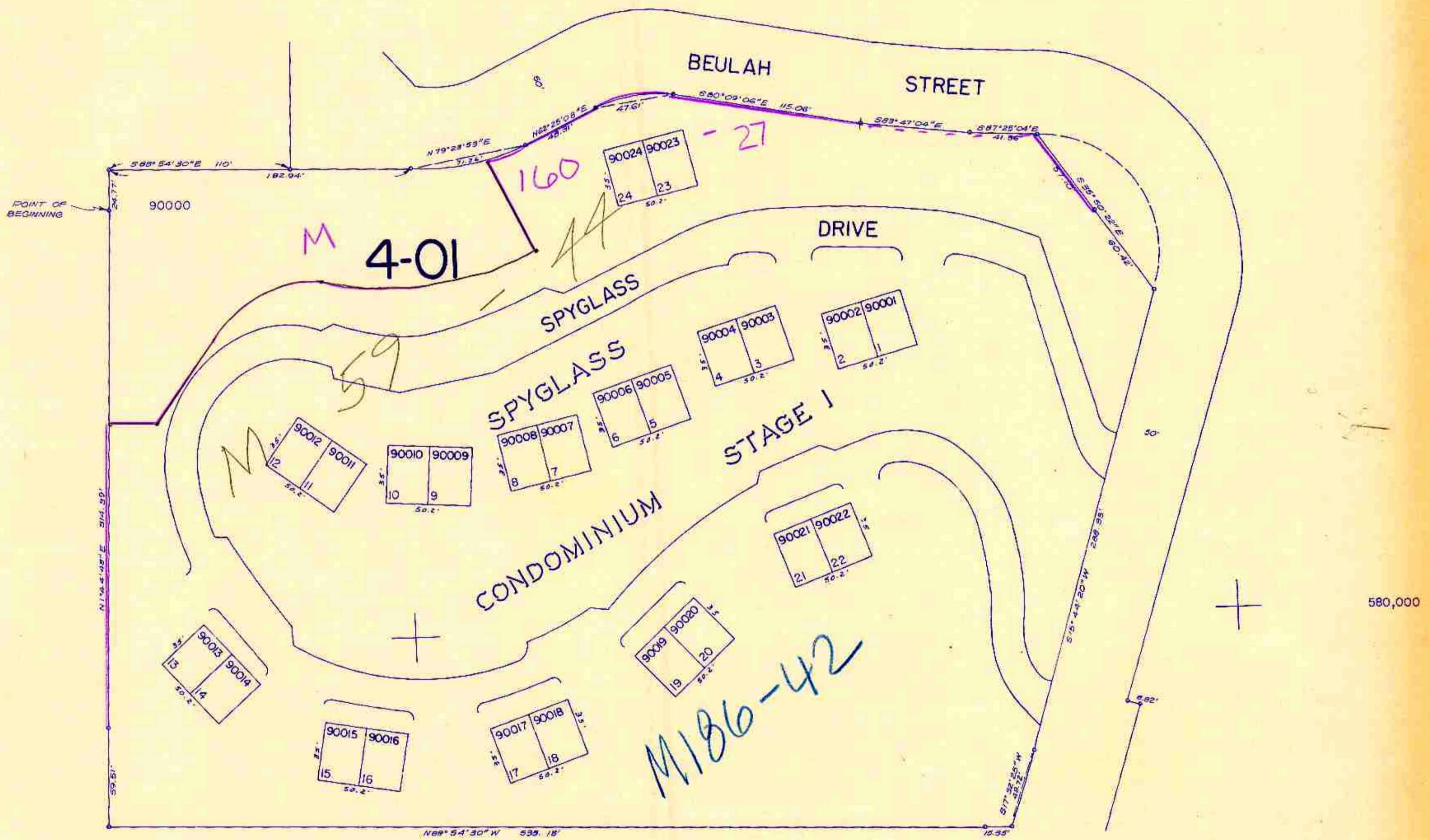
This map was prepared for assessment purpose only.

SE 1/4 NW 1/4 SEC. 18 T. 27S. R. 5W. W.M.
DOUGLAS COUNTY

6-12-92

27 5 18BD
SUPPLEMENTAL MAP

1" = 50'



27 5 18BD
SUPPLEMENTAL MAP

244,000