

THIS MAP WAS PREPARED FOR ASSESSMENT PURPOSE ONLY.

NW1/4 NE1/4 SEC.18 T.27S. R.5W. W.M.  
DOUGLAS COUNTY

1" = 100'

REVISED ON  
7-18-05

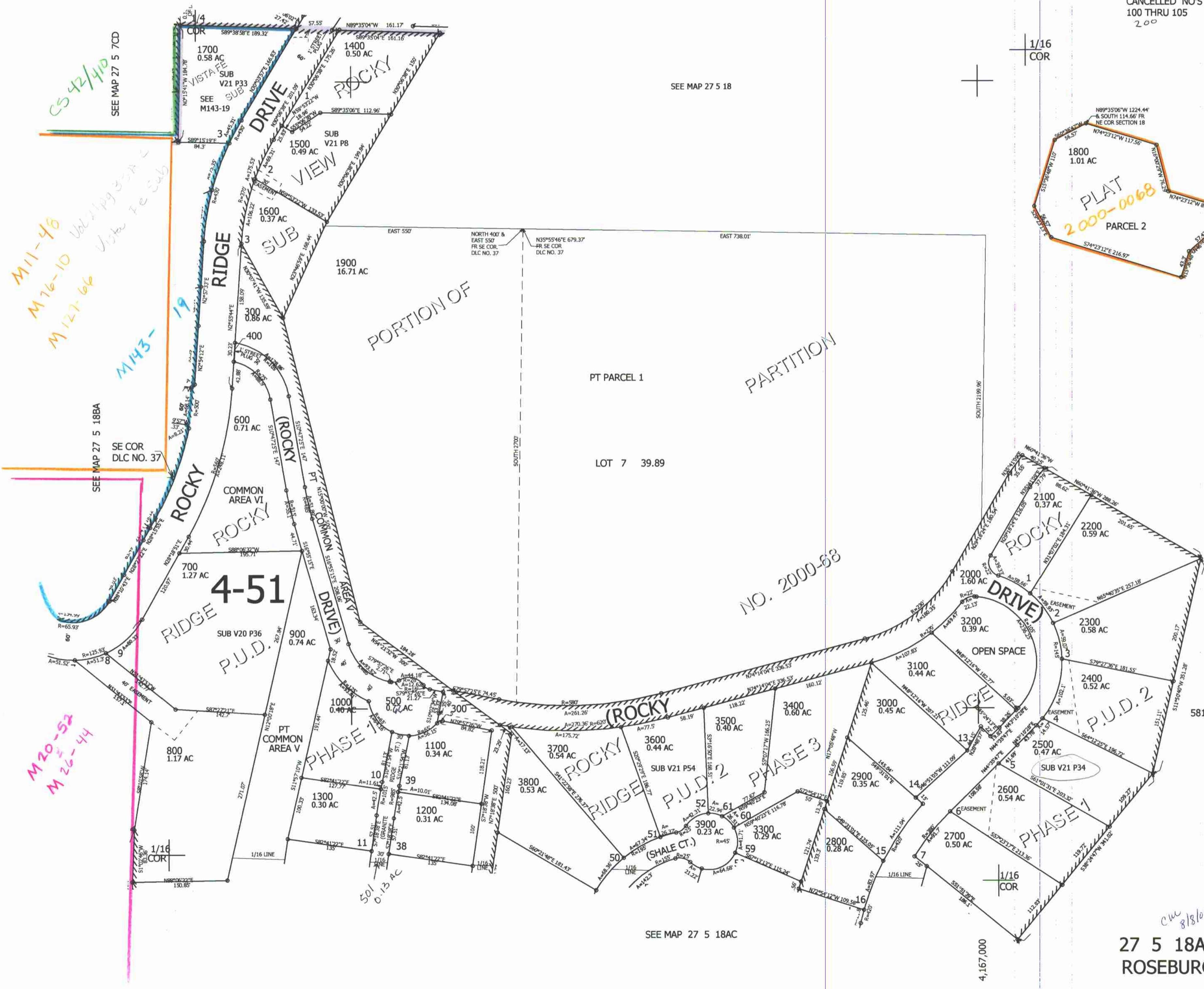
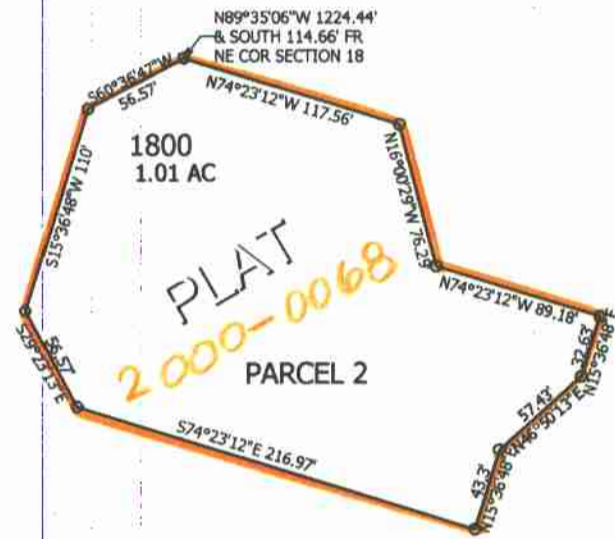
27 5 18AB  
ROSEBURG

SEE MAP 27 5 7

SEE MAP 27 5 18

CANCELLED NO'S  
100 THRU 105  
200

1/16  
COR



*Handwritten notes:*  
CS 42/410  
M11-48  
M76-10  
M127-66  
M143-19  
Vista Fe Sub

*Handwritten notes:*  
SEE MAP 27 5 18BA  
SE COR  
DLC NO. 37

*Handwritten notes:*  
M20-52  
M26-44

SEE MAP 27 5 18

*Handwritten notes:*  
cw 8/18/05  
27 5 18AB  
ROSEBURG