

THIS MAP WAS PREPARED FOR ASSESSMENT PURPOSE ONLY.

NW1/4 SE1/4 SEC.17 T.27S. R.5W. W.M.
DOUGLAS COUNTY

REVISED ON
3-22-17

27 5 17DB
ROSEBURG

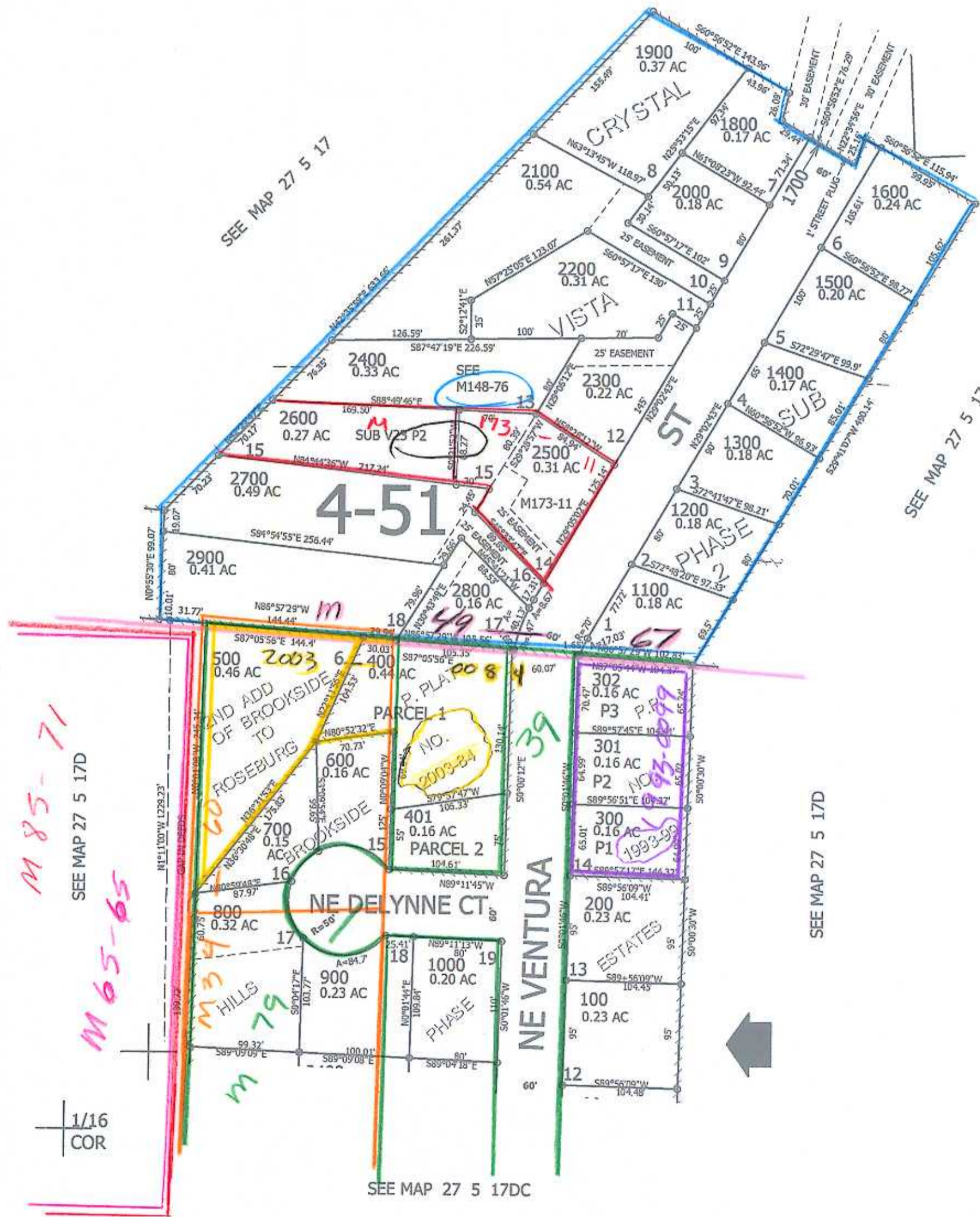
1" = 100'

CEN
SEC

1/16
COR

CANCELLED NO'S
501 399 2601

SEE MAP 27 5 17



NE COR.
DLC NO. 38

SEE MAP 27 5 17D

SEE MAP 27 5 17D

SEE MAP 27 5 17DC

1/16
COR

578,000

1/16
COR

4,172,000

27 5 17DB
ROSEBURG

Handwritten notes:
C.W.
11/17/07
JP