

This map was prepared for assessment purpose only.

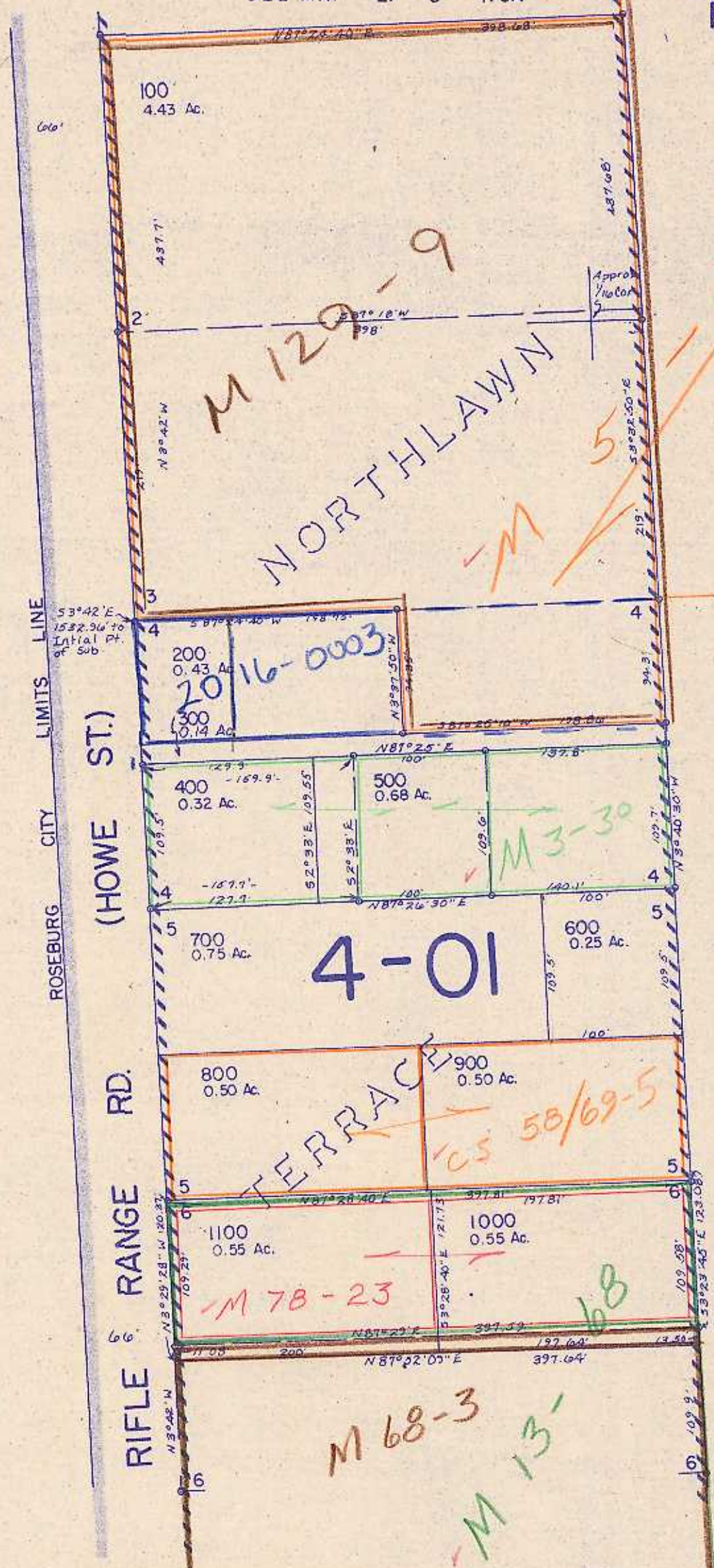
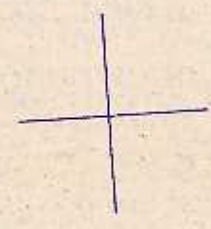
SW1/4 SW1/4 SEC. 17 T.27S. R. 5W. W.M.
DOUGLAS COUNTY

1" = 100'

SEE MAP 27 5 17CA

27 5 17CC
ROSEBURG

Approx
1/16 Cor.



SEE MAP 27 5 17

SEE MAP 27 5 17CD

SEE MAP 27 5 17

577,000

18	17
19	20

248,000

Approx
1/16 Cor.

27 5 17CC
ROSEBURG

8/31 83