

THIS MAP WAS PREPARED FOR  
ASSESSMENT PURPOSES ONLY.

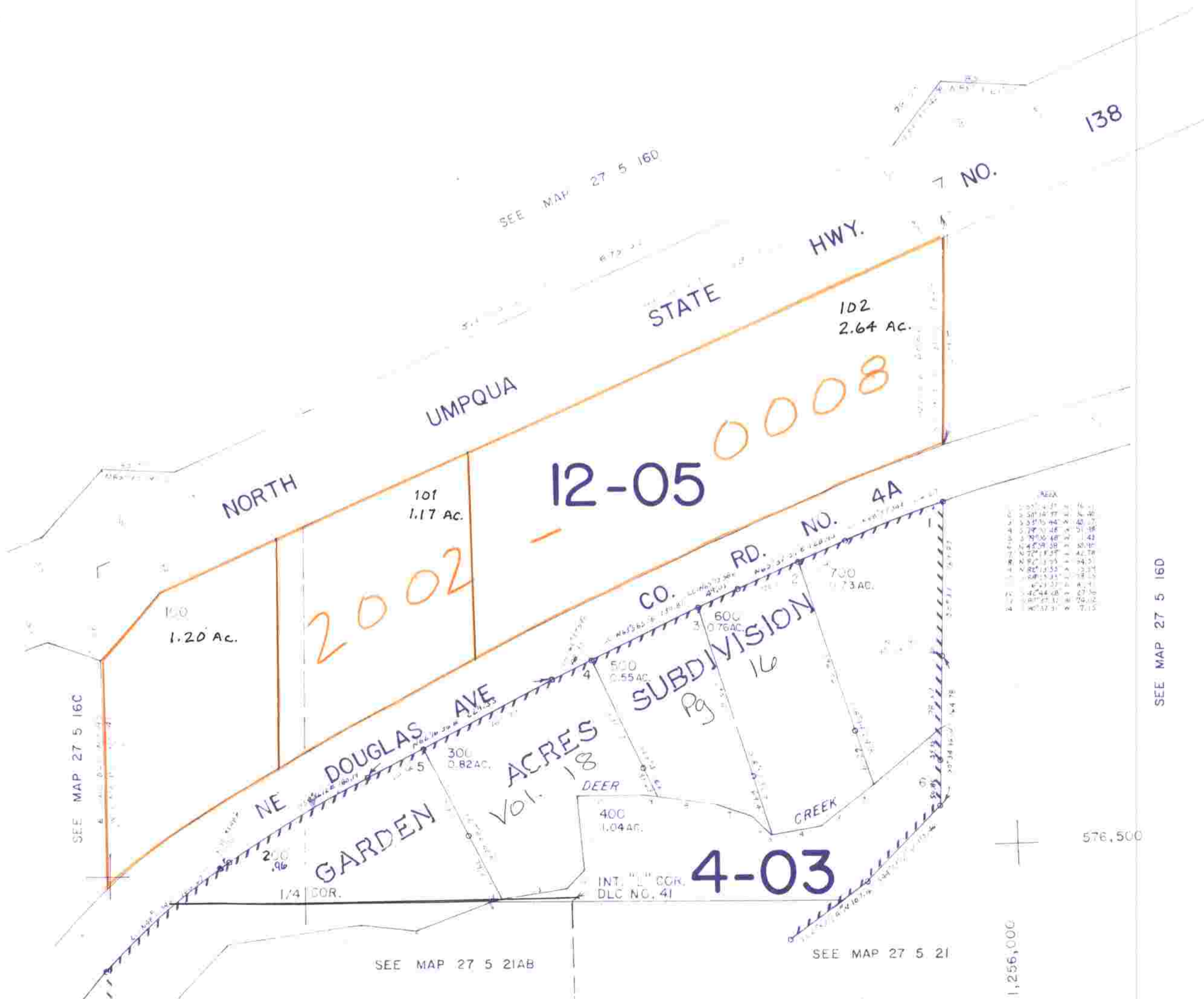
SW1/4SE1/4 SEC.16 T.27S. R.5W. W.M.  
DOUGLAS COUNTY

27 5 16DC  
ROSEBURG

1" = 100'

1/16 COR.

1/16 COR.



SEE MAP 27 5 16D

576,500

1,256,000

SEE MAP 27 5 21A

SEE MAP 27 5 21B

1/16 COR.

27 5 16DC  
ROSEBURG