

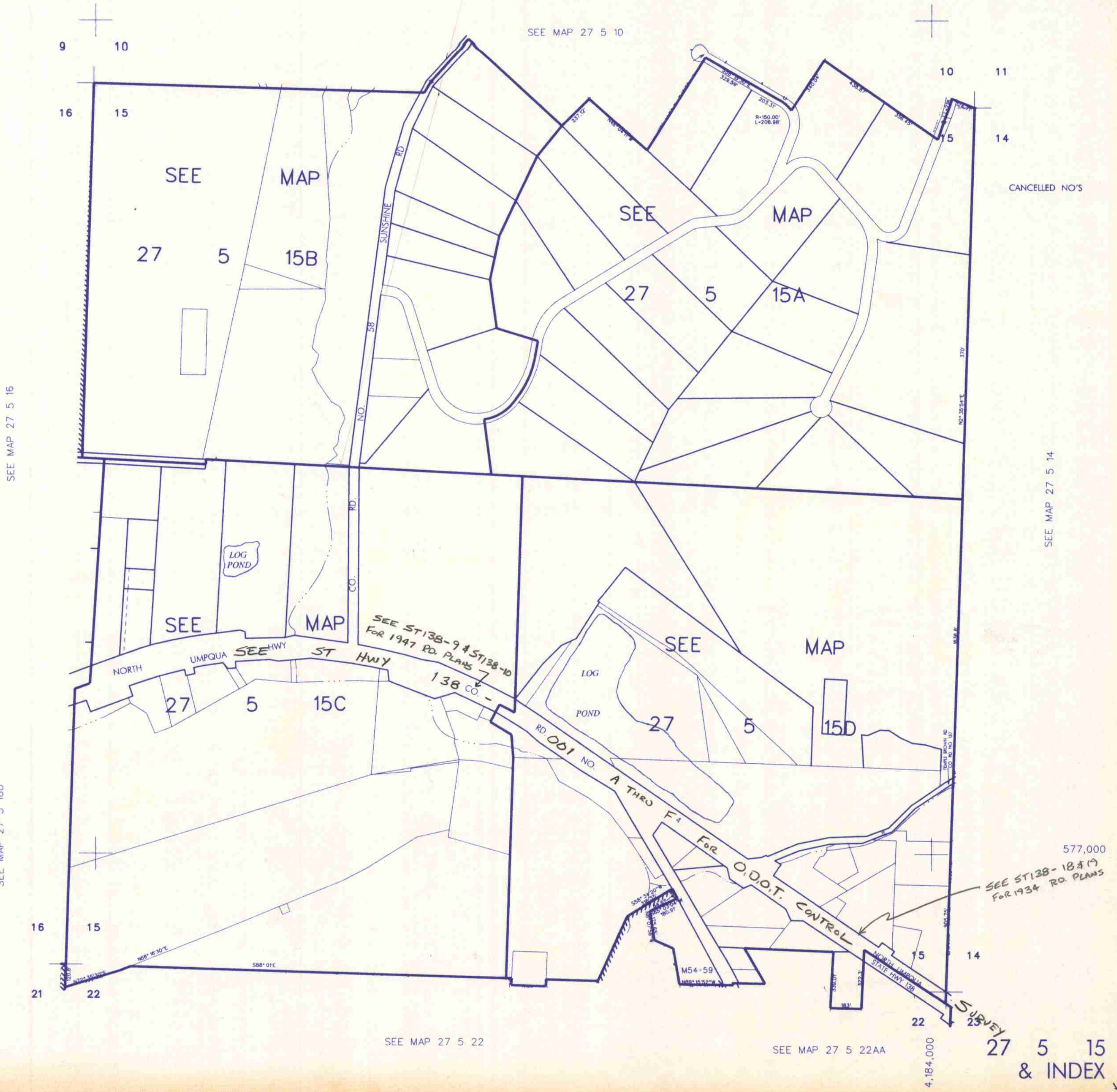
THIS MAP WAS PREPARED FOR
ASSESSMENT PURPOSE ONLY

SEC. 15 T.27S. R.5 W W.M.
DOUGLAS COUNTY

REVISED ON
6-21-99

27 5 15
& INDEX

1" = 400'



SEE MAP 27 5 10

SEE MAP

SEE MAP

SEE MAP

SEE MAP

SEE MAP 27 5 22

SEE MAP 27 5 22AA

27 5 15
& INDEX

4,184,000

577,000
SEE ST138-18 & 19
FOR 1934 RD. PLANS

SEE MAP 27 5 16

SEE MAP 27 5 16D

SEE MAP 27 5 14

CANCELLED NO'S