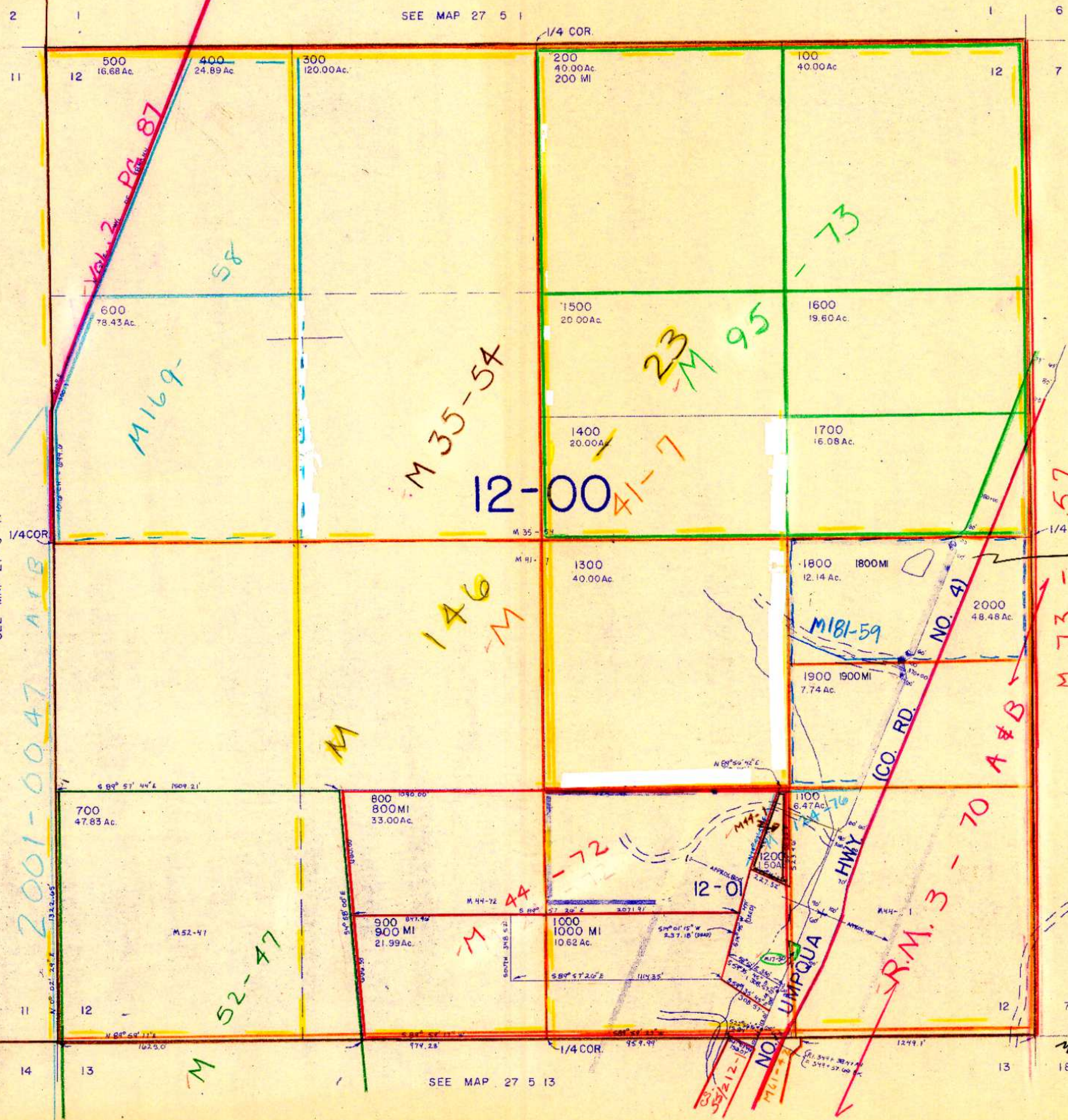


This map was prepared for assessment purpose only.

SECTION 12 T.27S.R. 5 W. W.M.
DOUGLAS COUNTY

1" = 400'



SEE MAP 27 5 1

SEE MAP 27 5 11

SEE MAP 27 5 13

SEE ST138-20
FOR 1920 ALIGNMENT
ST138-29 & ST138-30
FOR 1925 RD. PLAN.