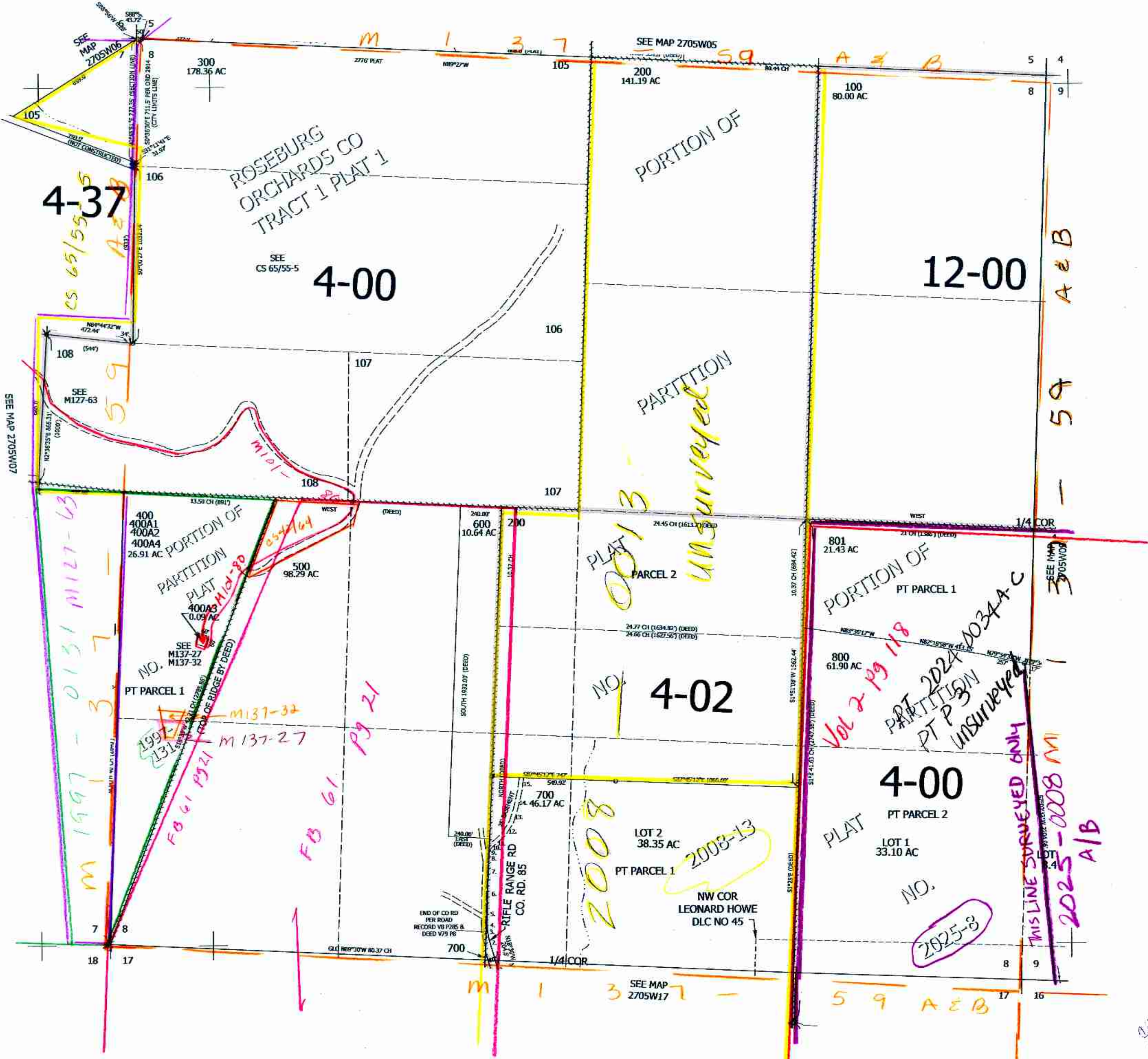


SEC.08 T.27S. R.05W. W.M.  
DOUGLAS COUNTY  
1" = 400'

CANCELLED NOS:  
500M1 600M1 201  
802 803

Upper Left:  
123°19'54"W 43°14'43"N  
4166948E 588019N ft.

- PP 2008-13  
C/L 40' CO. RD. NO. 85 R/W &  
C/L 25' EASEMENT
1. N17°34'50"W 77.14'
  2. N15°31'43"W 62.86'
  3. N10°38'27"W 57.68'
  4. N2°08'40"W 51.89'
  5. N0°54'07"E 109.55'
  6. N1°53'11"E 134.96'
  7. N2°00'30"E 101.99'
  8. N6°09'34"E 57.64'
  9. N31°51'39"E 39.04'
  10. N49°24'45"E 45.08'
  11. N47°04'00"E 66.53'
  12. N32°49'31"E 84.24'
  13. N17°47'59"E 78.33'
  14. N12°39'42"E 108.74'
  15. N8°00'51"E 76.54'



Lower Right:  
123°18'5"W 43°13'36"N  
4174797E 581064N ft.

2/0508  
270508