

THIS MAP WAS PREPARED FOR ASSESSMENT PURPOSE ONLY.

1/16 COR

SE1/4 SW1/4 SEC.7 T.27S. R.5W. W.M. DOUGLAS COUNTY 1" = 100'

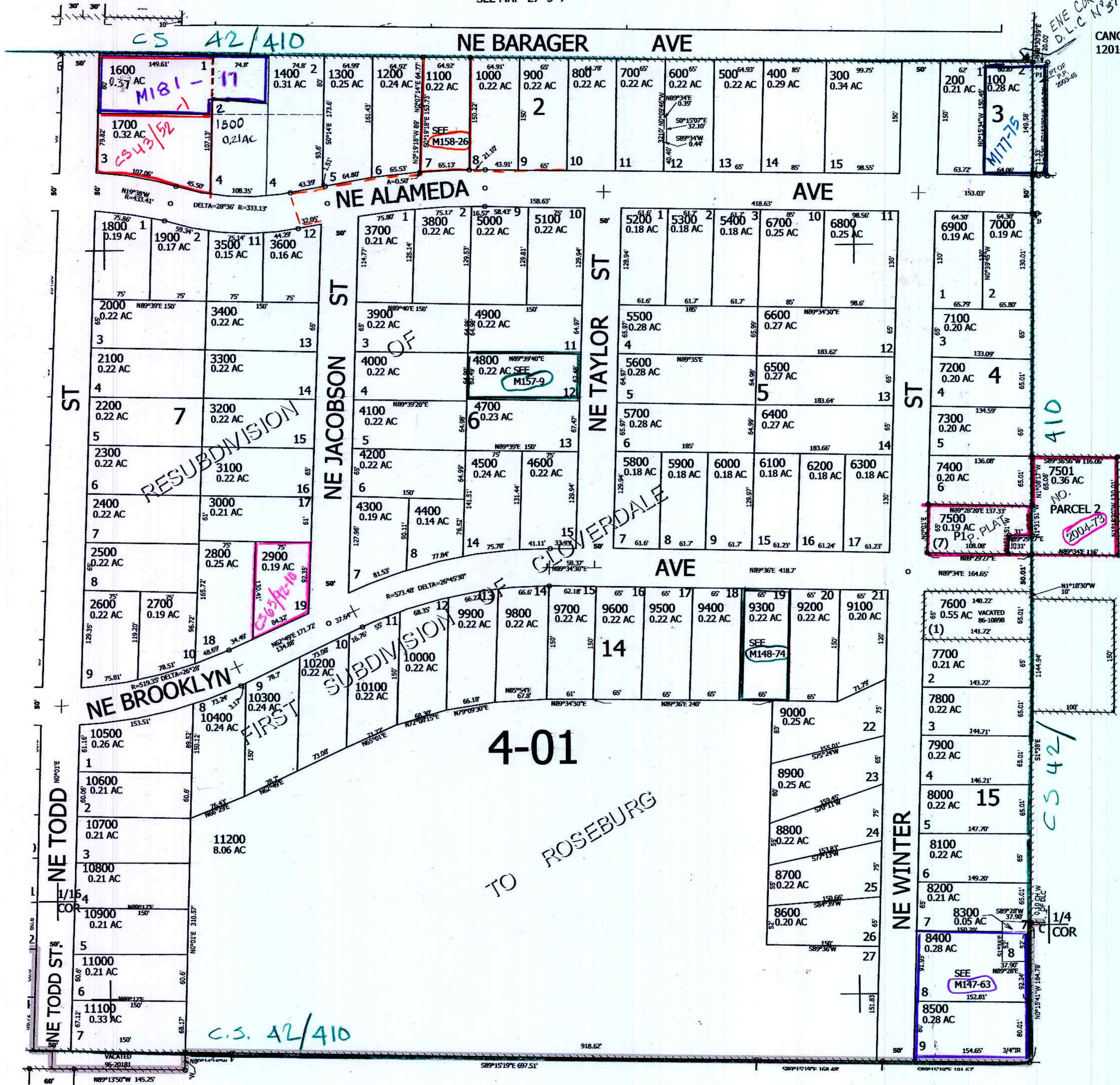
REVISED ON 12-24-20

27 5 7CD ROSEBURG

1/16 COR

SEE MAP 27 5 7CB

SEE MAP 27 5 7



SEE MAP 27 5 7CC

SEE MAP 27 5 7

SEE MAP 27 5 18BA

4,165,500

27 5 7CD ROSEBURG