

THIS MAP WAS PREPARED FOR ASSESSMENT PURPOSE ONLY.

SW1/4 NW1/4 SEC.7 T.27S. R.5W. W.M. DOUGLAS COUNTY

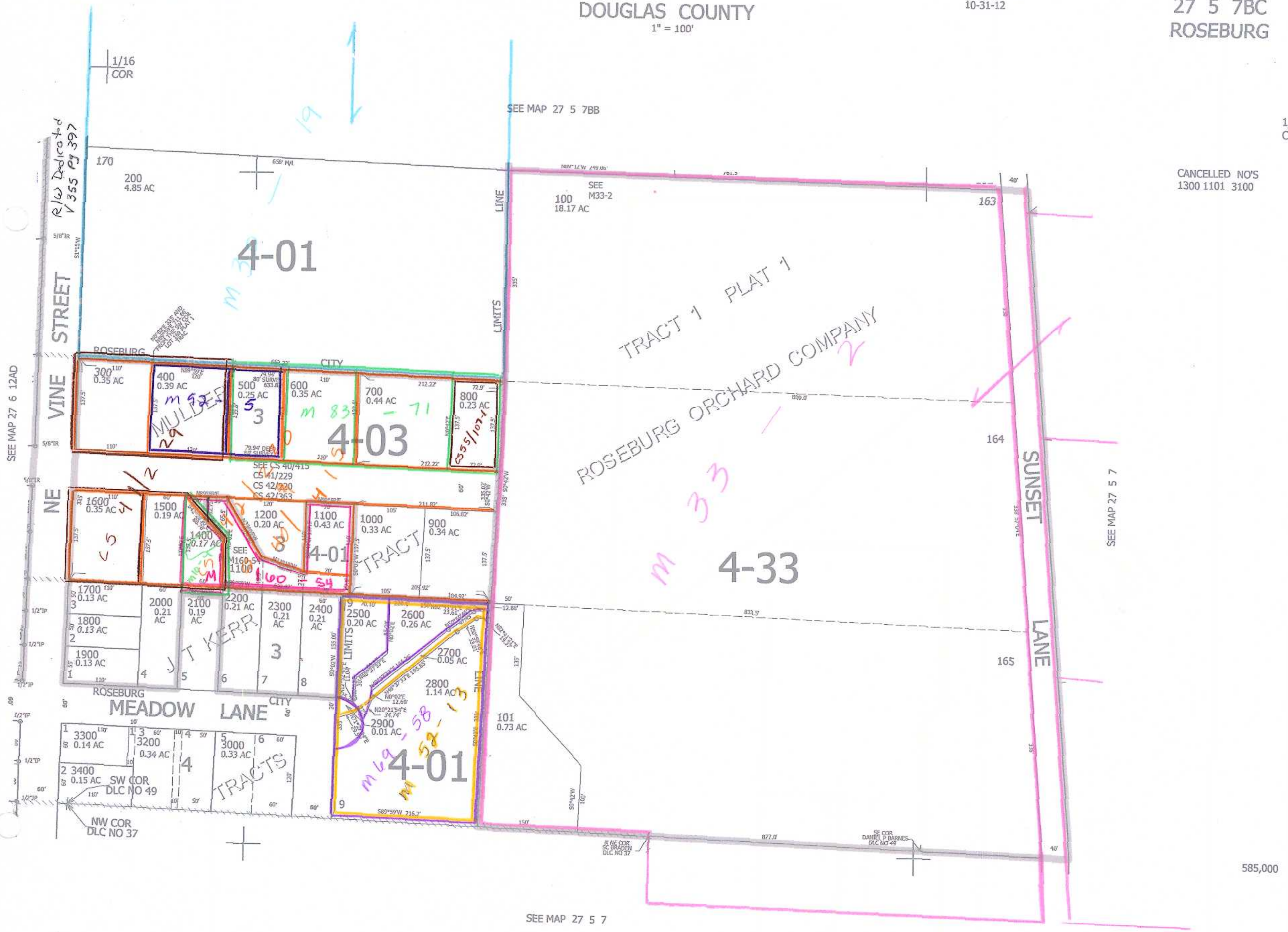
1" = 100'

REVISED ON 10-31-12

27 5 7BC ROSEBURG

1/4 COR

CANCELLED NO'S 1300 1101 3100



SEE MAP 27 6 12AD

SEE MAP 27 5 7BB

SEE MAP 27 5 7

SEE MAP 27 5 7

585,000

4,164,000

am 3/19/10

1/16 COR

scv

27 5 7BC ROSEBURG