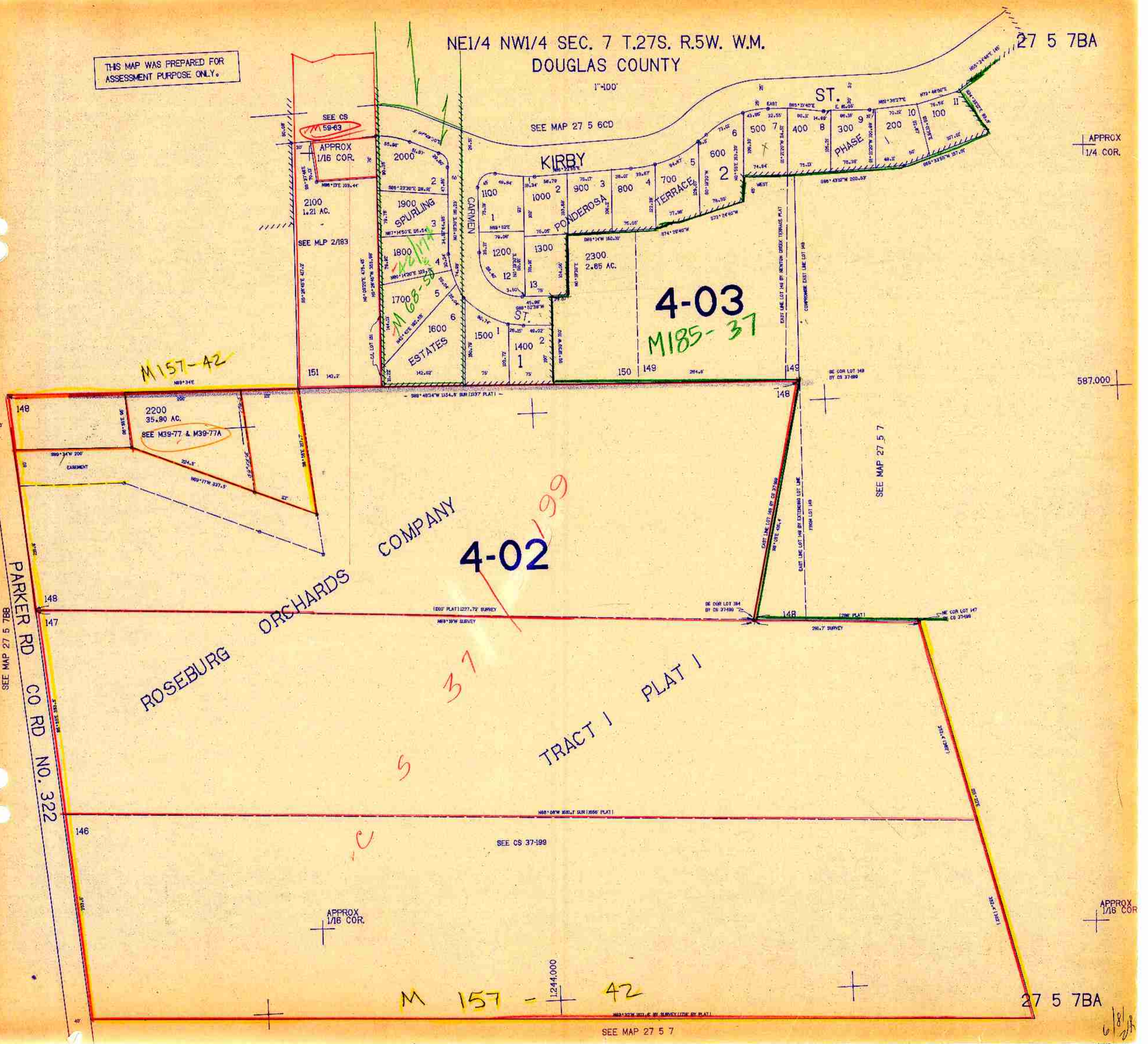


THIS MAP WAS PREPARED FOR ASSESSMENT PURPOSE ONLY.

NE1/4 NW1/4 SEC. 7 T.27S. R.5W. W.M.
DOUGLAS COUNTY

27 5 7BA



M 157-42

4-03
M 185-37

ROSEBURG ORCHARDS COMPANY

4-02

TRACT 1 PLAT 1

M 157 - 1244,000 - 42

APPROX 1/4 COR.

587,000

APPROX 1/16 COR.

27 5 7BA

6/8/23