

THIS MAP WAS PREPARED FOR ASSESSMENT PURPOSE ONLY.

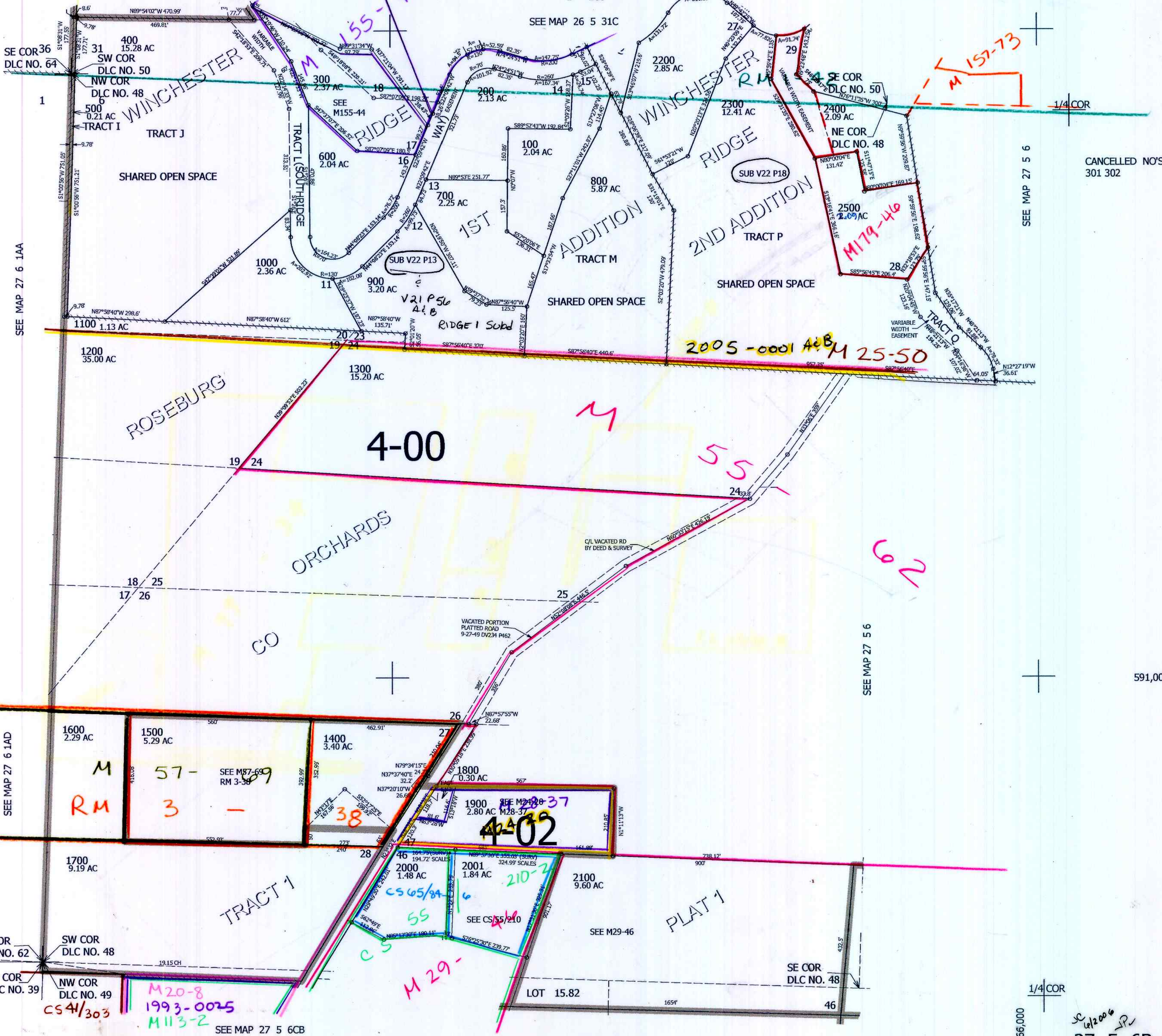
NW1/4 SEC.6 T.27S. R.5W. W.M. DOUGLAS COUNTY

REVISED ON 11-20-09

27 5 6B

1" = 200'

SEE MAP 26 5 31C



SEE MAP 27 6 1AA

SEE MAP 27 5 6

CANCELLED NO'S 301 302

SEE MAP 27 5 6

SEE MAP 27 6 1AD

591,000

SEE MAP 27 5 6CB

SEE MAP 27 5 6

4,166,000

27 5 6B