

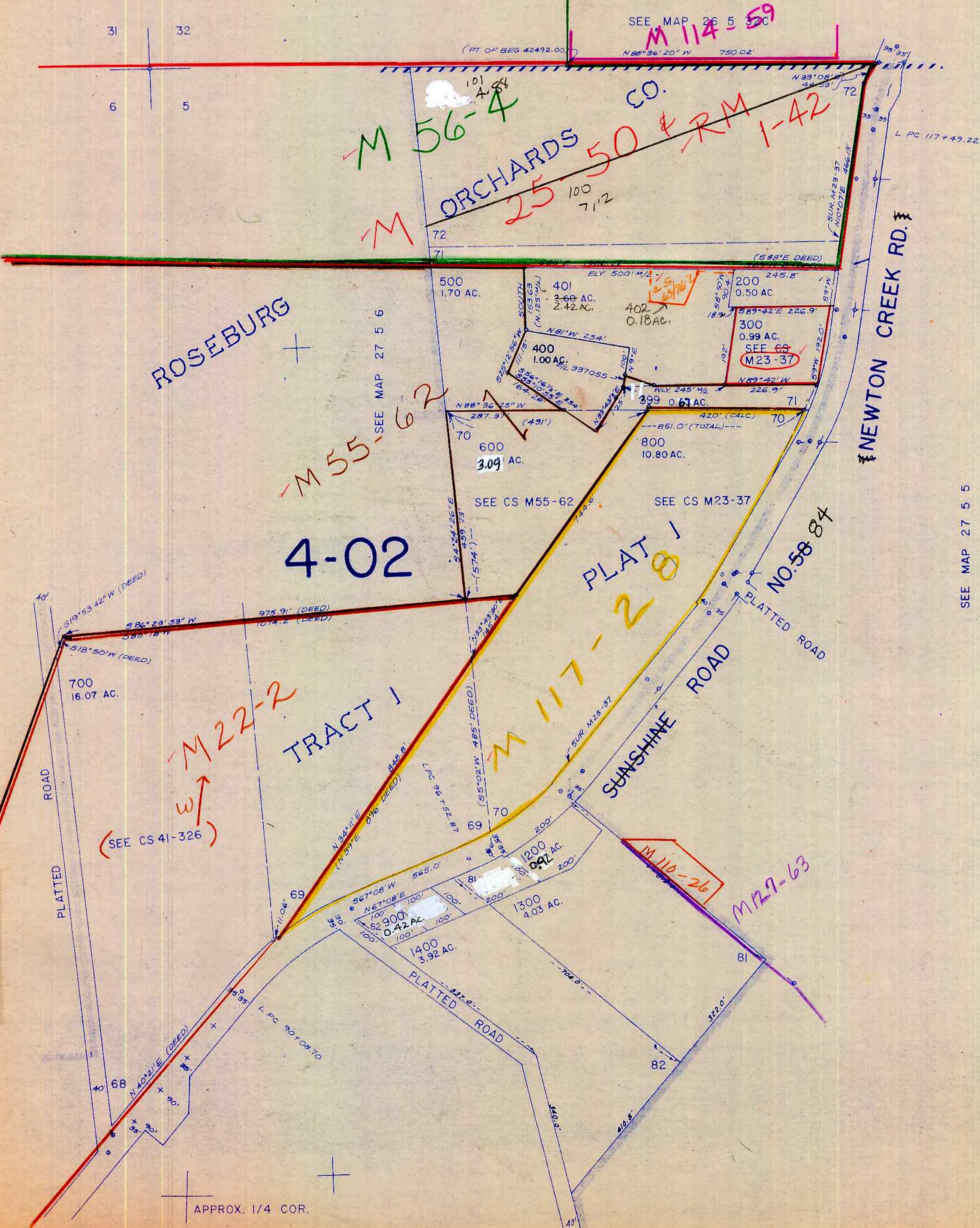
This map was prepared for assessment purposes only.

NW1/4 SEC. 5 T.27S. R.5W. W.M.

27 5 5B

DOUGLAS COUNTY

1" = 200'



CANCELLED NO'S 1000

SEE MAP 27 5 5

SEE MAP 27 5 6

4-02

TRACT 1

PLAT 1

NO. 58 84

SUNSHINE ROAD

NEWTON CREEK RD.

ROSEBURG

ORCHARDS CO.

M 22-2

M 117-28

M 110-26

M 129-63

M 56-4

M 114-59

M 55-62

SEE MAP 27 5 5

590,000

APPROX. CEN. SEC.

27 5 5B

TFV 9/88

1,248,000