

THIS MAP WAS PREPARED FOR ASSESSMENT PURPOSE ONLY.

SEC.3 T.27S. R.5W. W.M. DOUGLAS COUNTY

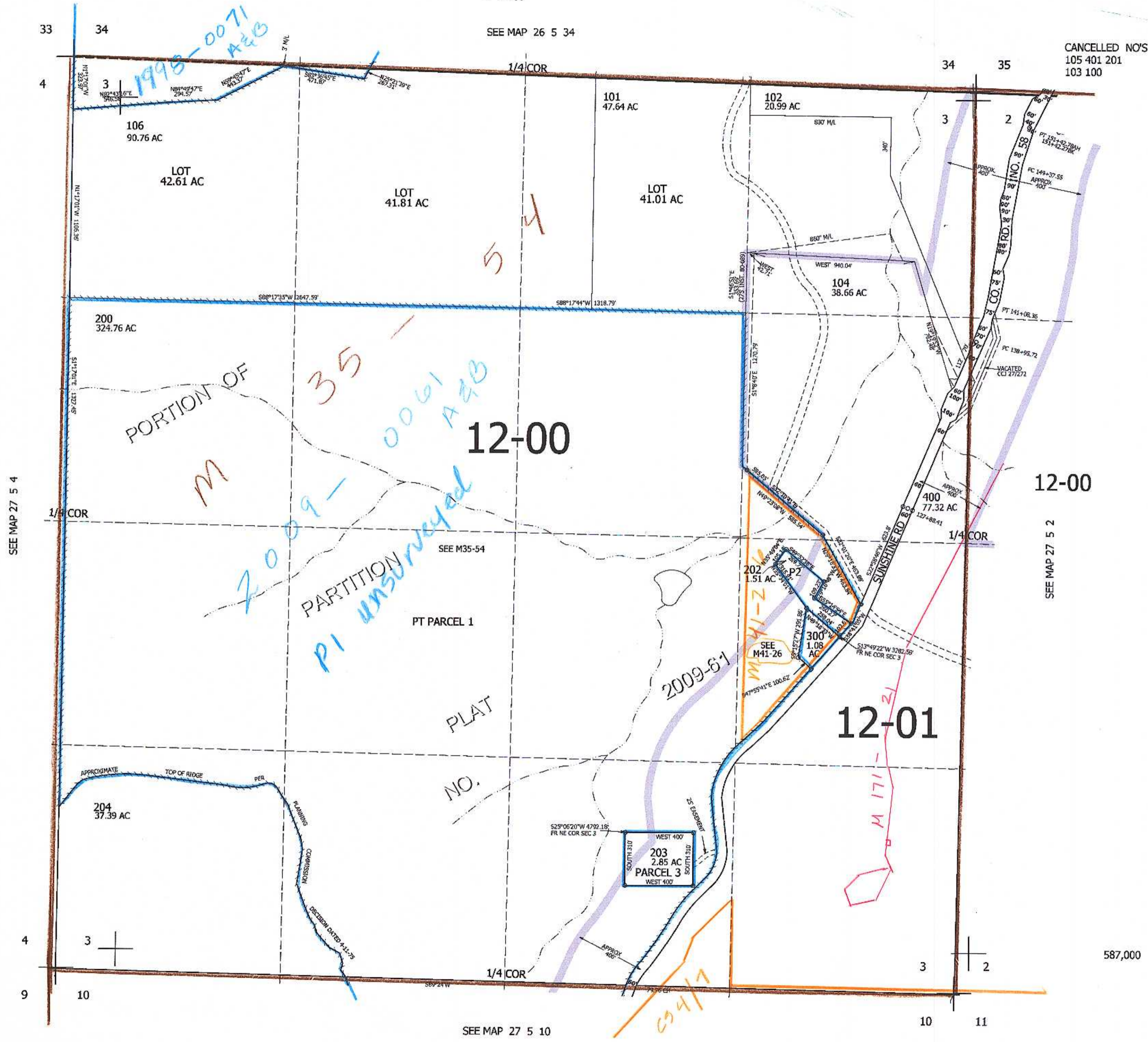
REVISED ON 12-4-09

27 5 3

1" = 400'

SEE MAP 26 5 34

CANCELLED NO'S 105 401 201 103 100



SEE MAP 27 5 4

SEE MAP 27 5 2

SEE MAP 27 5 10

587,000

4,184,500

27 5 3

✓nw