

THIS MAP WAS PREPARED FOR ASSESSMENT PURPOSE ONLY.

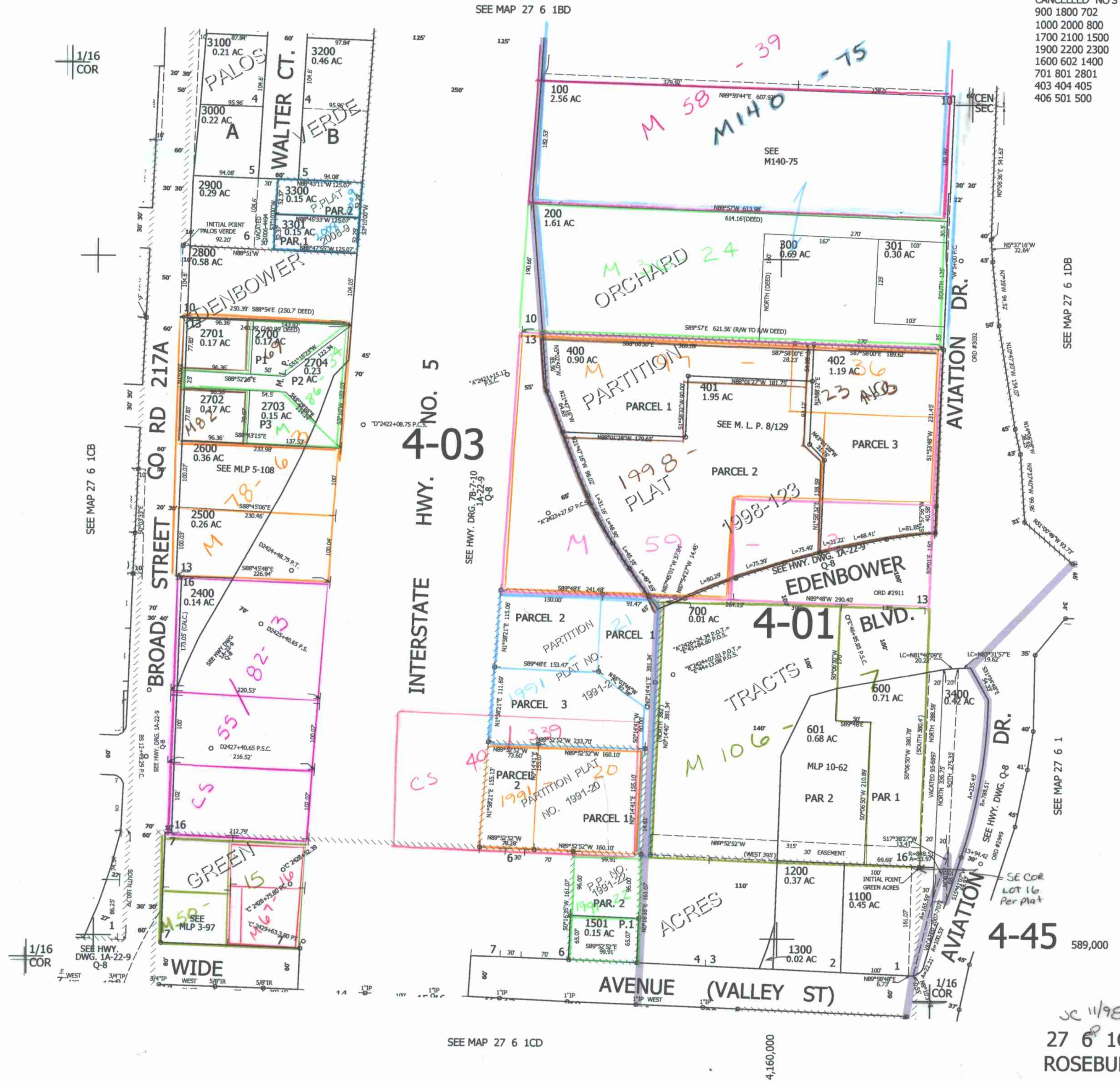
NE1/4 SW1/4 SEC.1 T.27S. R.6W. W.M.
DOUGLAS COUNTY

REVISED ON
4-17-08

27 6 1CA
ROSEBURG

1" = 100'

CANCELLED NO'S
900 1800 702
1000 2000 800
1700 2100 1500
1900 2200 2300
1600 602 1400
701 801 2801
403 404 405
406 501 500



SEE MAP 27 6 1CD

4,160,000

27 6 1CA
ROSEBURG