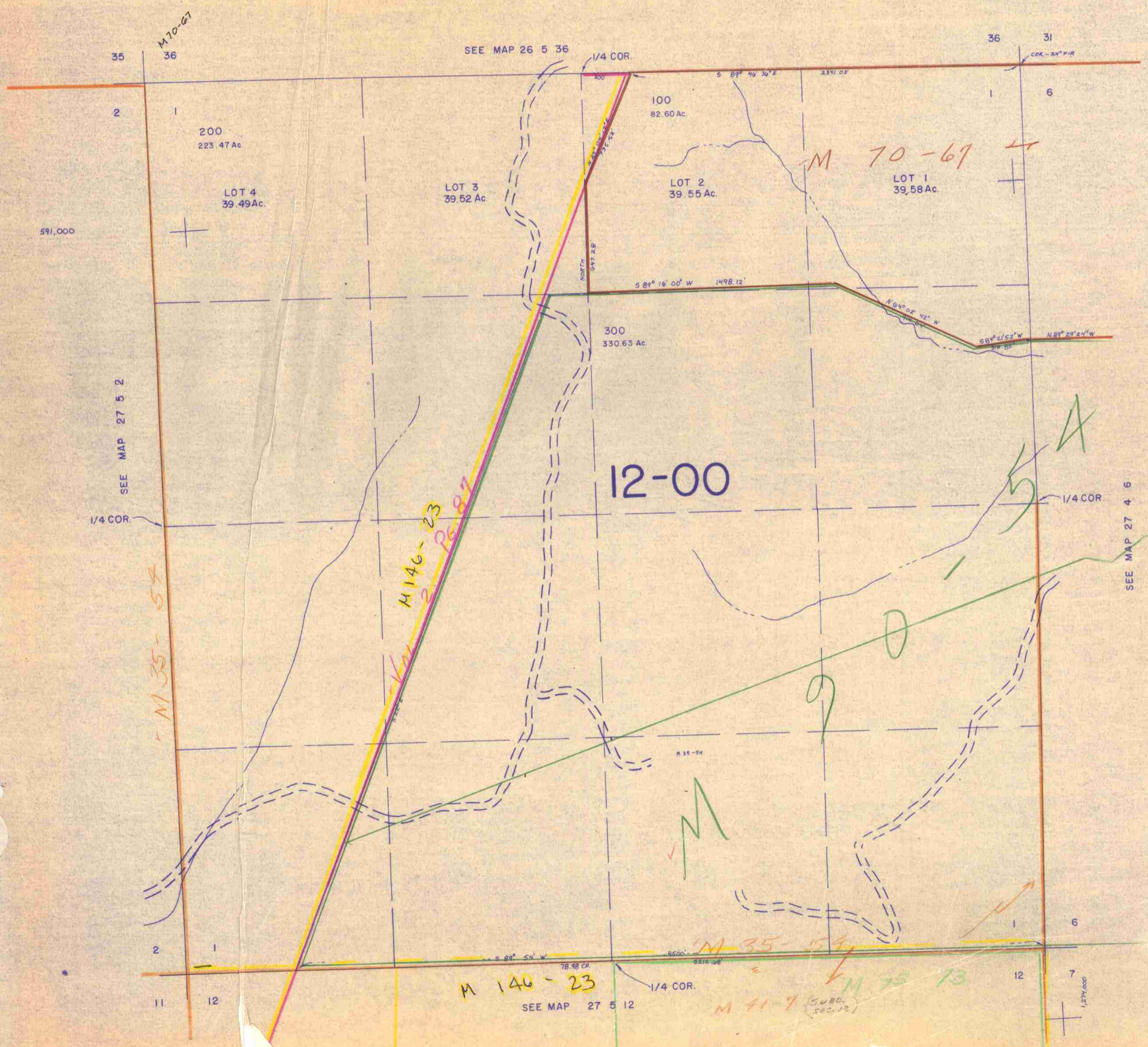


This map was prepared for assessment purpose only.

SECTION 1 T.27S. R. 5 W. W.M.
DOUGLAS COUNTY

27 5 1

1" = 400'



35 36

SEE MAP 26 5 36

36 31

2 1

200
223.47 Ac.

100
82.60 Ac.

LOT 3
39.52 Ac.

LOT 2
39.55 Ac.

LOT 1
39.58 Ac.

591,000

SEE MAP 27 5 2

12-00

1/4 COR.

1/4 COR.

SEE MAP 27 4 6

M 35-54

M 146-23

M 35-54

M 35-54

M 146-23

SEE MAP 27 5 12

M 75-73

2 1

S 89° 54' W

1/4 COR.

11 12

27 5 1