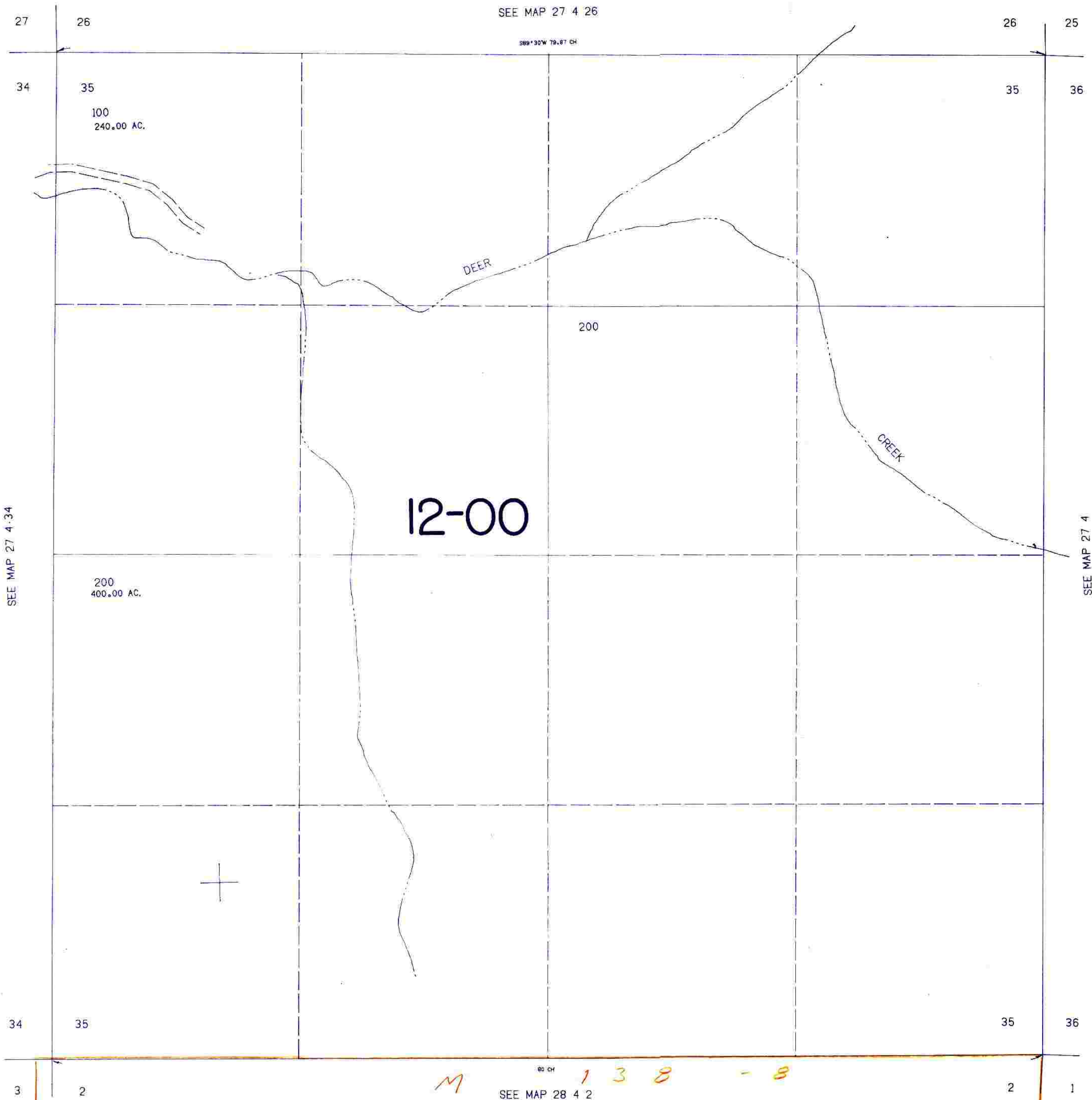


SECTION 35 T.27S. R.4W. W.M.
DOUGLAS COUNTY

27 4 35

THIS MAP WAS PREPARED FOR
ASSESSMENT PURPOSE ONLY.

1"=400'



12-00

100
240.00 AC.

200
400.00 AC.

200

DEER

CREEK

SEE MAP 27 4 34

SEE MAP 27 4

SEE MAP 28 4 2

M 138-8

1,295.000

560.000

27 4 35

clb/jr