

SECTION 34 T.27S. R.4W. W.M.
DOUGLAS COUNTY

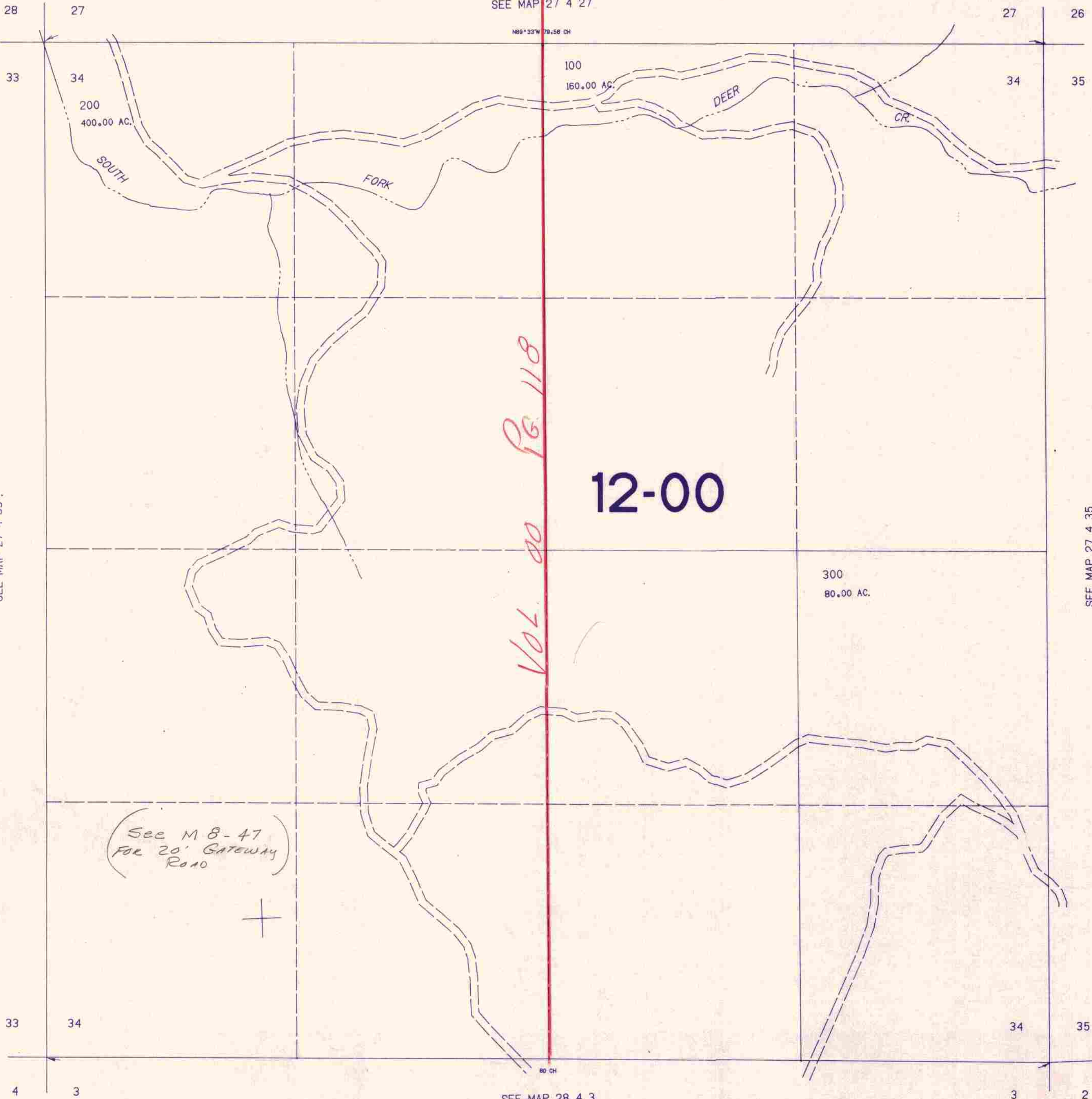
27 4 34

THIS MAP WAS PREPARED FOR
ASSESSMENT PURPOSE ONLY.

1"=400'

SEE MAP 27 4 27

N89°33'W 79.56 CH



SEE MAP 27 4 33

SEE MAP 27 4 35

(See M 8-47
For 20' Gateway
Road)

SEE MAP 28 4 3

27 4 34

1:290,000

4/85