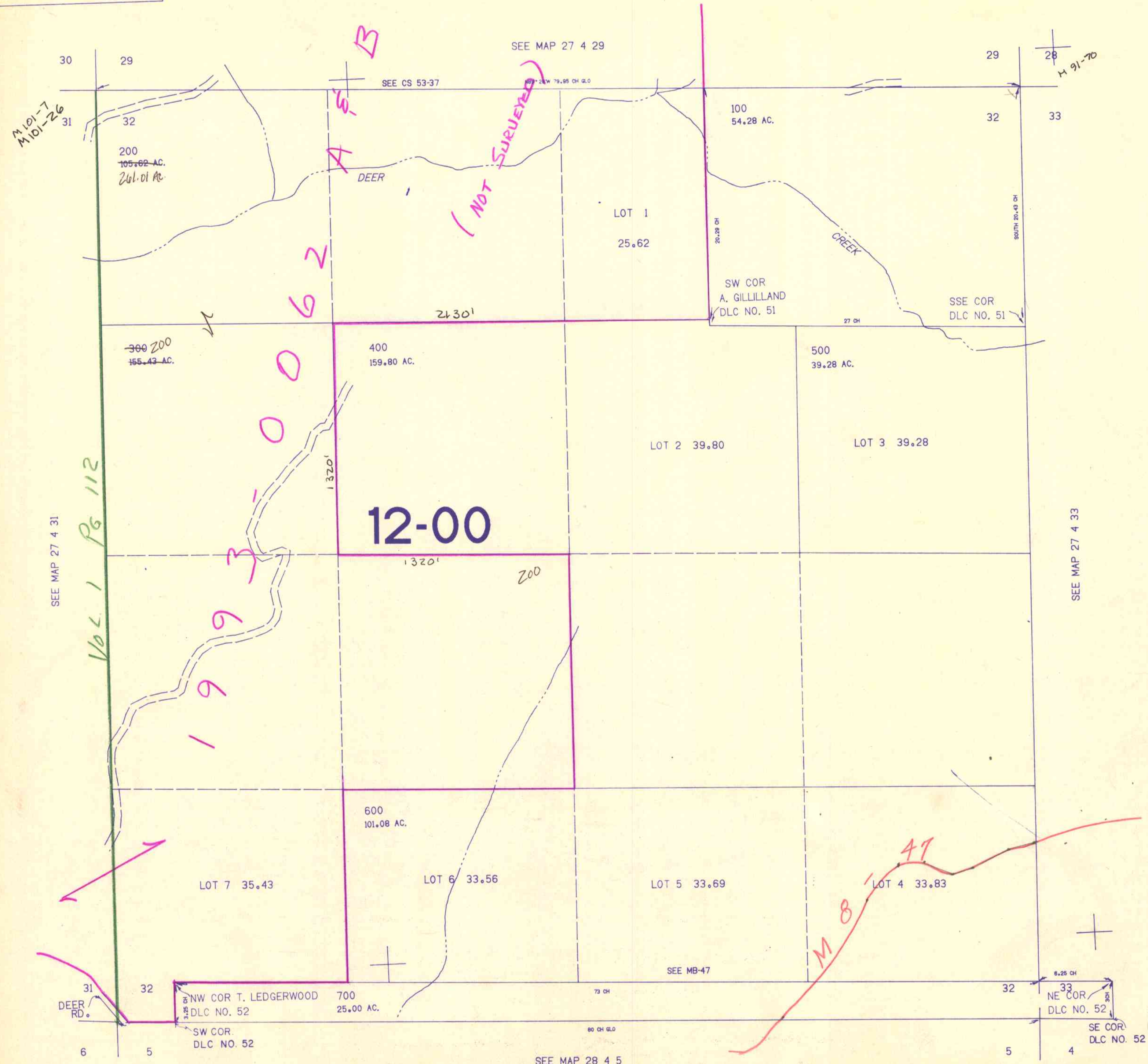


SECTION 32 T.27S. R.4W. W.M.
DOUGLAS COUNTY

27 4 32

THIS MAP WAS PREPARED FOR
ASSESSMENT PURPOSE ONLY.

1"=400'



SEE MAP 27 4 31

Vol 1 Pg 112

SEE MAP 27 4 29

SEE CS 53-37

M 91-70

(NOT SURVEYED)

12-00

1993-0062

M 8-47

SEE MAP 27 4 33

SEE MAP 28 4 5

27 4 32

1,280,000

560,000

6/85