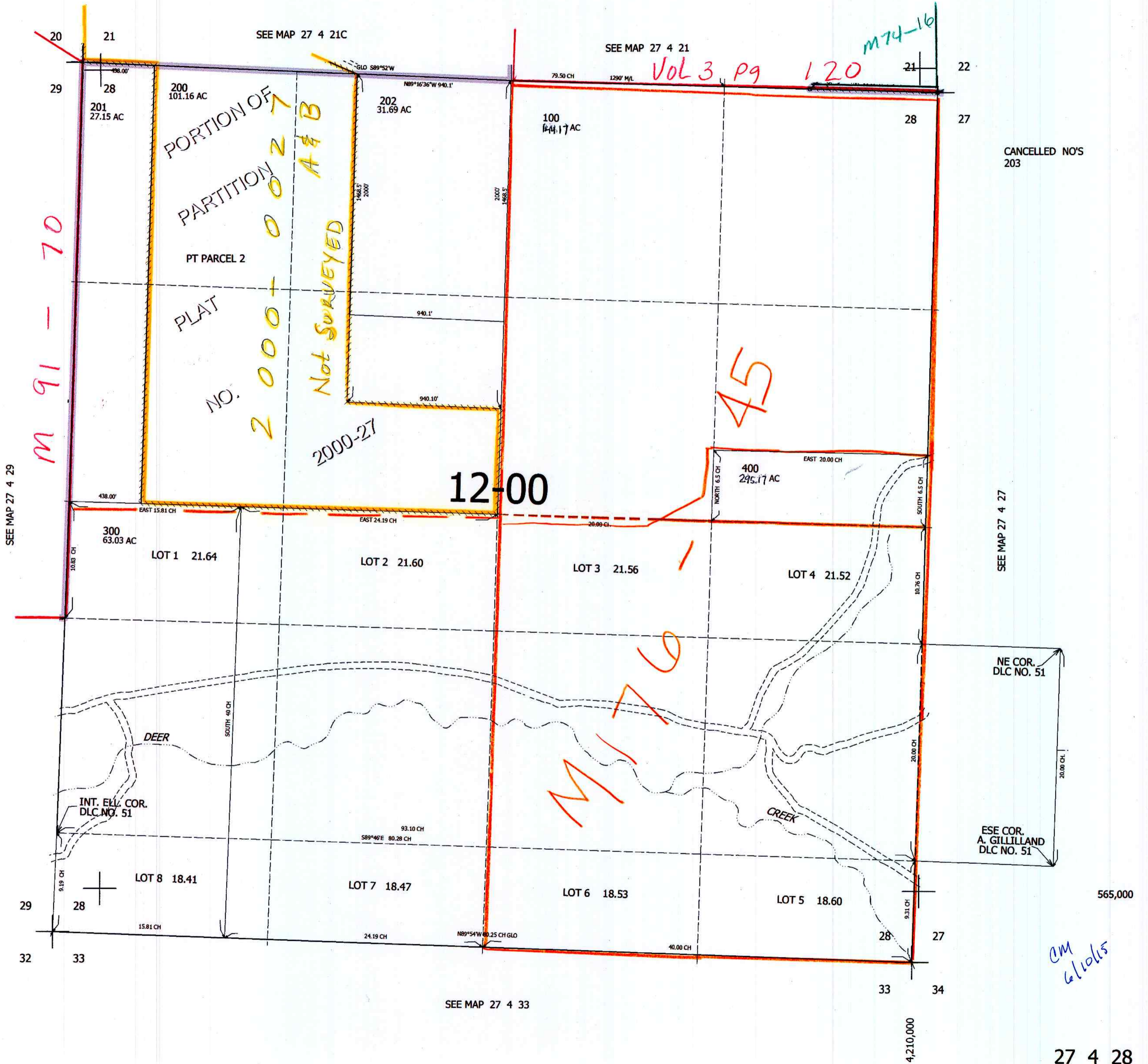


THIS MAP WAS PREPARED FOR ASSESSMENT PURPOSE ONLY.

SEC.28 T.27S. R.4W. W.M.  
DOUGLAS COUNTY  
1" = 400'

REVISED ON  
5-8-15

27 4 28



CANCELLED NO'S  
203

AM  
6/10/15

27 4 28