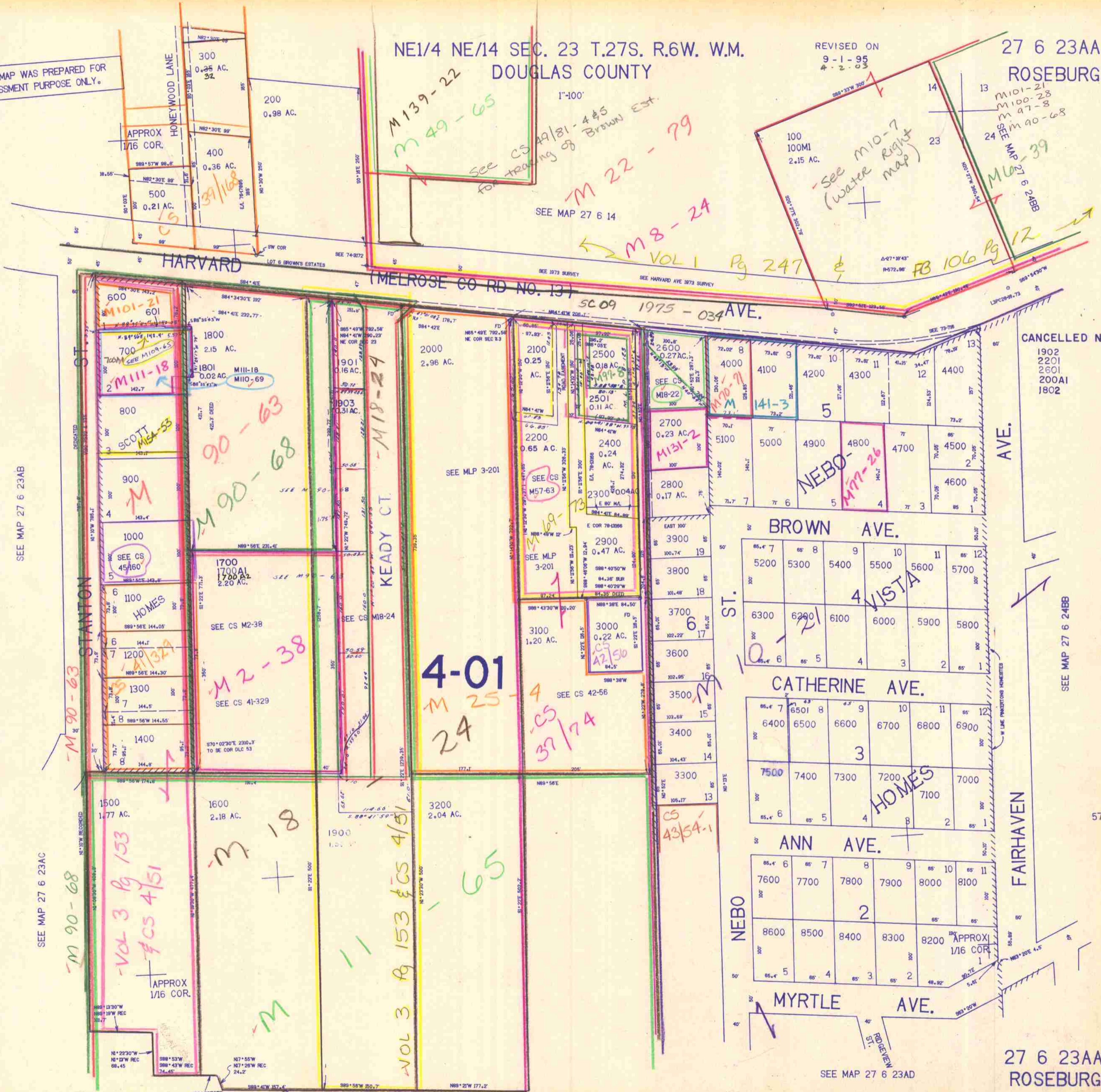


THIS MAP WAS PREPARED FOR ASSESSMENT PURPOSE ONLY.

NE1/4 NE/14 SEC. 23 T.27S. R.6W. W.M. DOUGLAS COUNTY

REVISED ON 9-1-95 4-2-03

27 6 23AA ROSEBURG



SEE MAP 27 6 23AB

SEE MAP 27 6 23AC

CANCELLED NOS. 1902 2201 2601 200AI 1802

SEE MAP 27 6 24BB

576.00

4-01 M 25-4 24 CS 37/74

BROWN AVE.

CATHERINE AVE.

ANN AVE.

MYRTLE AVE.

FAIRHAVEN

27 6 23AA ROSEBURG

SEE MAP 27 6 23AD

SEE MAP 27 6 23AD

10/97 BC