

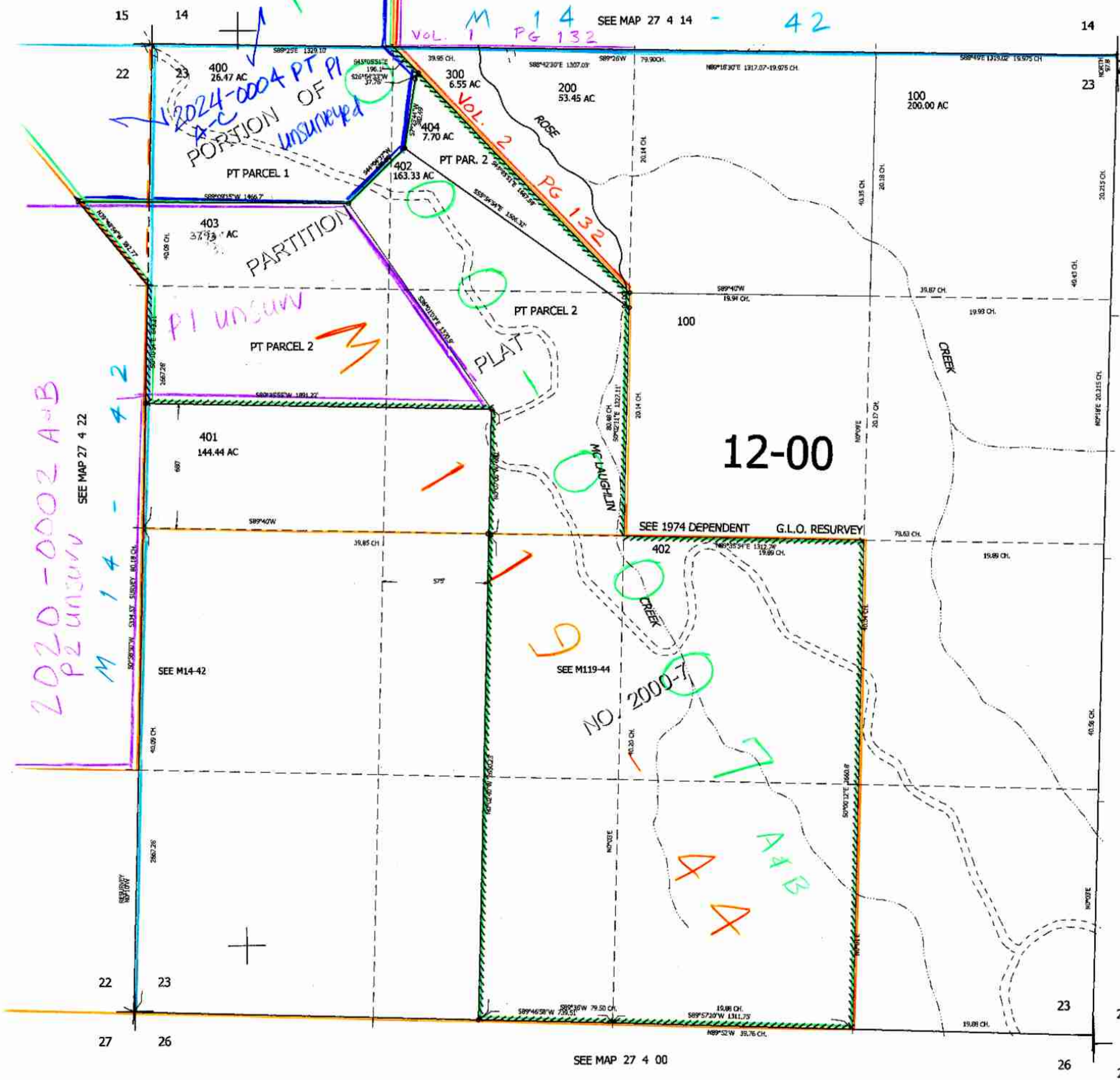
THIS MAP WAS PREPARED FOR
ASSESSMENT PURPOSE ONLY.

SEC.23 T.27S. R.4W. W.M.
DOUGLAS COUNTY

1" = 400'

REVISED ON
12-23-03

27 4 23



CANCELLED NO'S

SEE MAP 27 4 00

570,000

4,221,000

SEE MAP 27 4 00

27 4 23
12/03 RP