

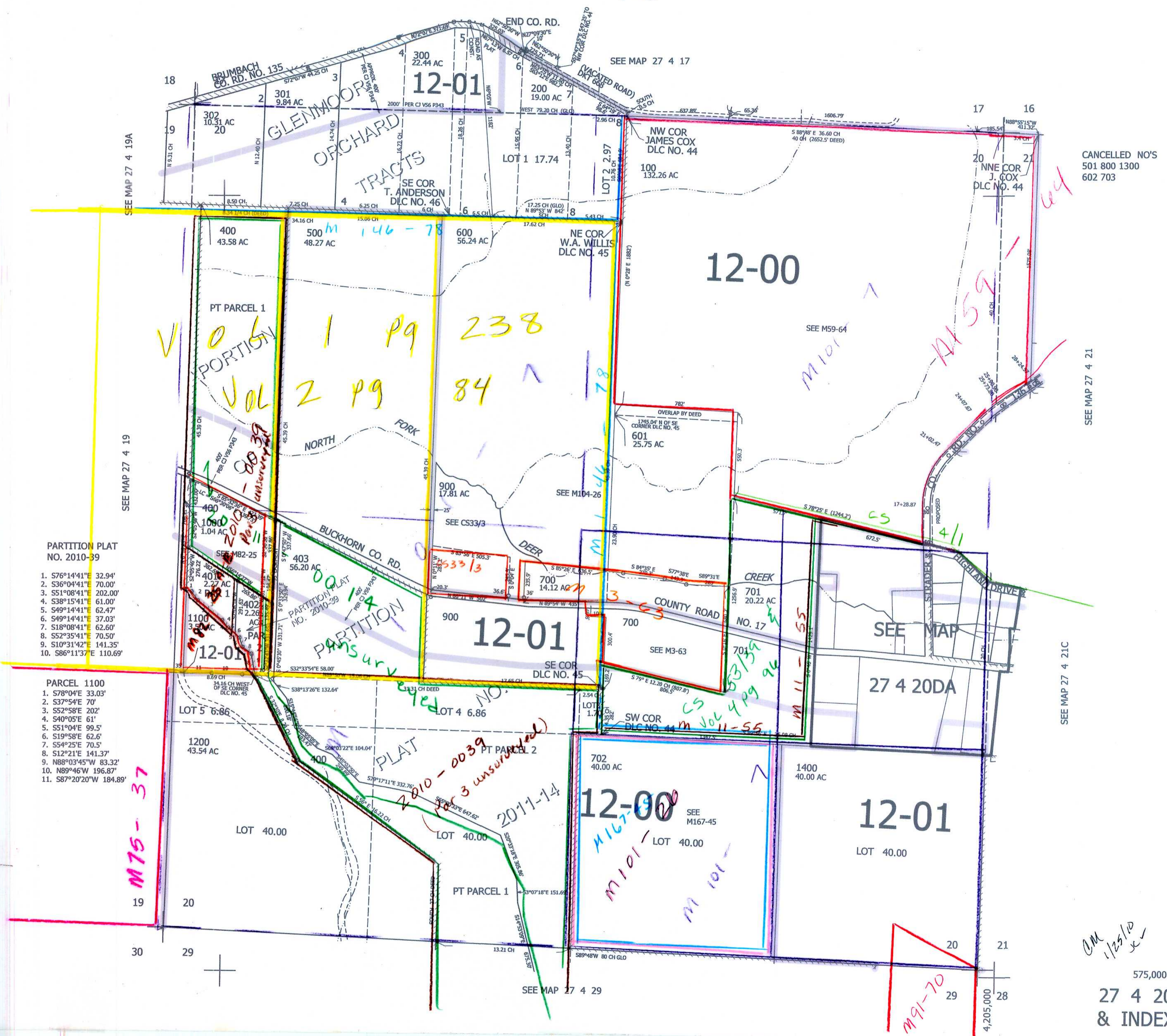
THIS MAP WAS PREPARED FOR ASSESSMENT PURPOSE ONLY.

SEC.20 T.27S. R.4W. W.M. DOUGLAS COUNTY

REVISED ON 1-24-18

27 4 20 & INDEX

1" = 400'



SEE MAP 27 4 19A

SEE MAP 27 4 19

SEE MAP 27 4 17

CANCELLED NO'S 501 800 1300 602 703

SEE MAP 27 4 21

SEE MAP 27 4 21C

PARTITION PLAT NO. 2010-39

1. S76°14'41"E 32.94'
2. S36°04'41"E 70.00'
3. S51°08'41"E 202.00'
4. S38°15'41"E 61.00'
5. S49°14'41"E 62.47'
6. S49°14'41"E 37.03'
7. S18°08'41"E 62.60'
8. S52°35'41"E 70.50'
9. S10°31'42"E 141.35'
10. S86°11'37"E 110.69'

- PARCEL 1100
1. S78°04'E 33.03'
 2. S37°54'E 70'
 3. S52°58'E 202'
 4. S40°05'E 61'
 5. S51°04'E 99.5'
 6. S19°58'E 62.6'
 7. S54°25'E 70.5'
 8. S12°21'E 141.37'
 9. N88°03'45"W 83.32'
 10. N89°46'W 196.87'
 11. S87°20'20"W 184.89'

M75-37



SEE MAP 27 4 29

AM 1/25/18

575,000 27 4 20 & INDEX 4,205,000