

NE1/4 SEC.19 T.27S. R.4W. W.M.
DOUGLAS COUNTY

27 4 19A

THIS MAP WAS PREPARED FOR
ASSESSMENT PURPOSE ONLY.

1"=200'

APPROX.
1/4 COR.
4.07 CH.

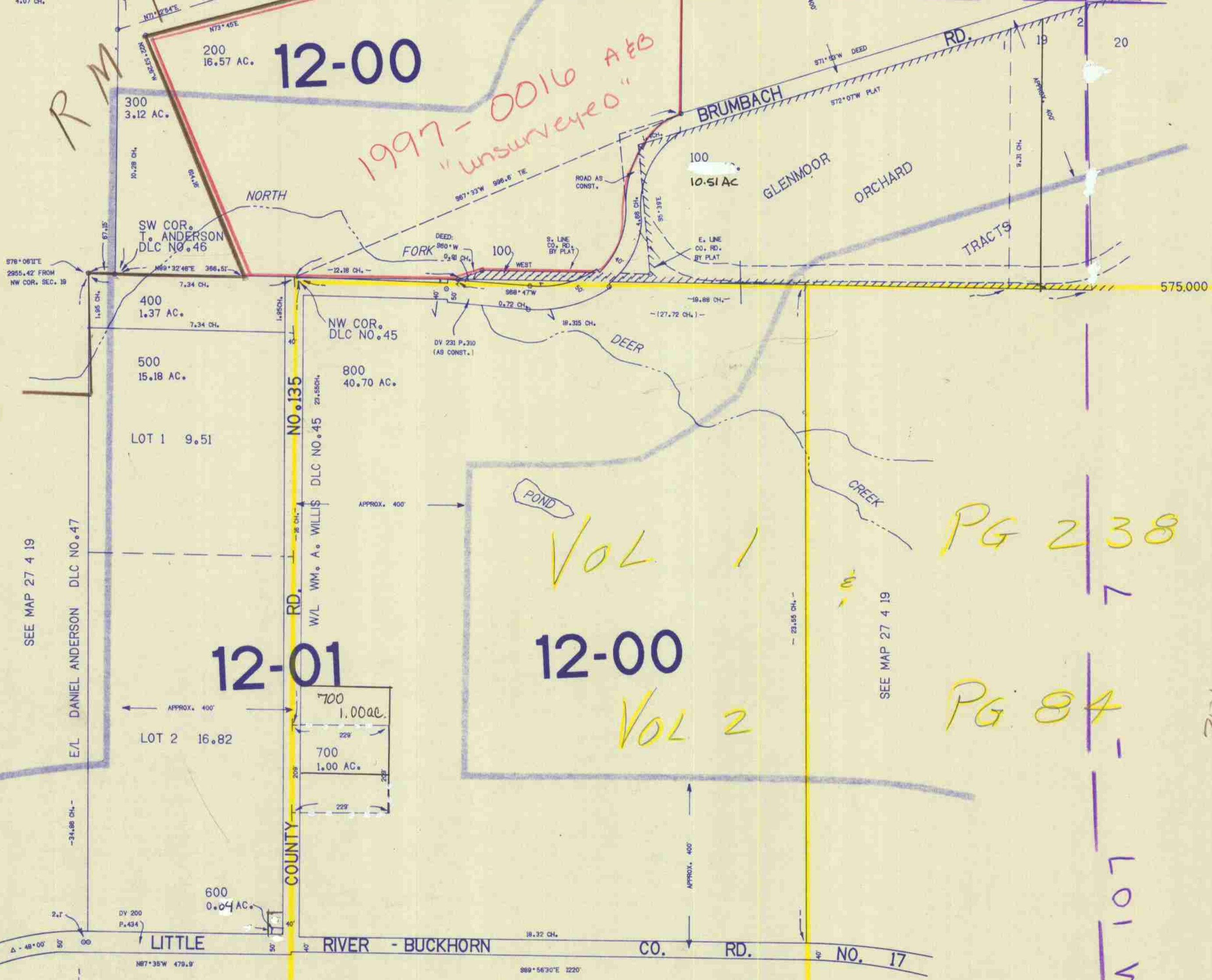
SEE MAP 27 4 18

RM
AA

12-00

1997-0016 A&B
"unsurveyed"

Cancelled
701
801
101



SEE MAP 27 4 19

E/L DANIEL ANDERSON DLC NO. 47

12-01

RD. NO. 135
W/L WM. A. WILLIS DLC NO. 45

12-00

VOL 2

PG 238

PG 84

SEE MAP 27 4 19

2010-0039 A&B

M 107

APPROX.
CEN. SEC.

APPROX.
1/4 COR

1,278,000

27 4 19A

105 R