

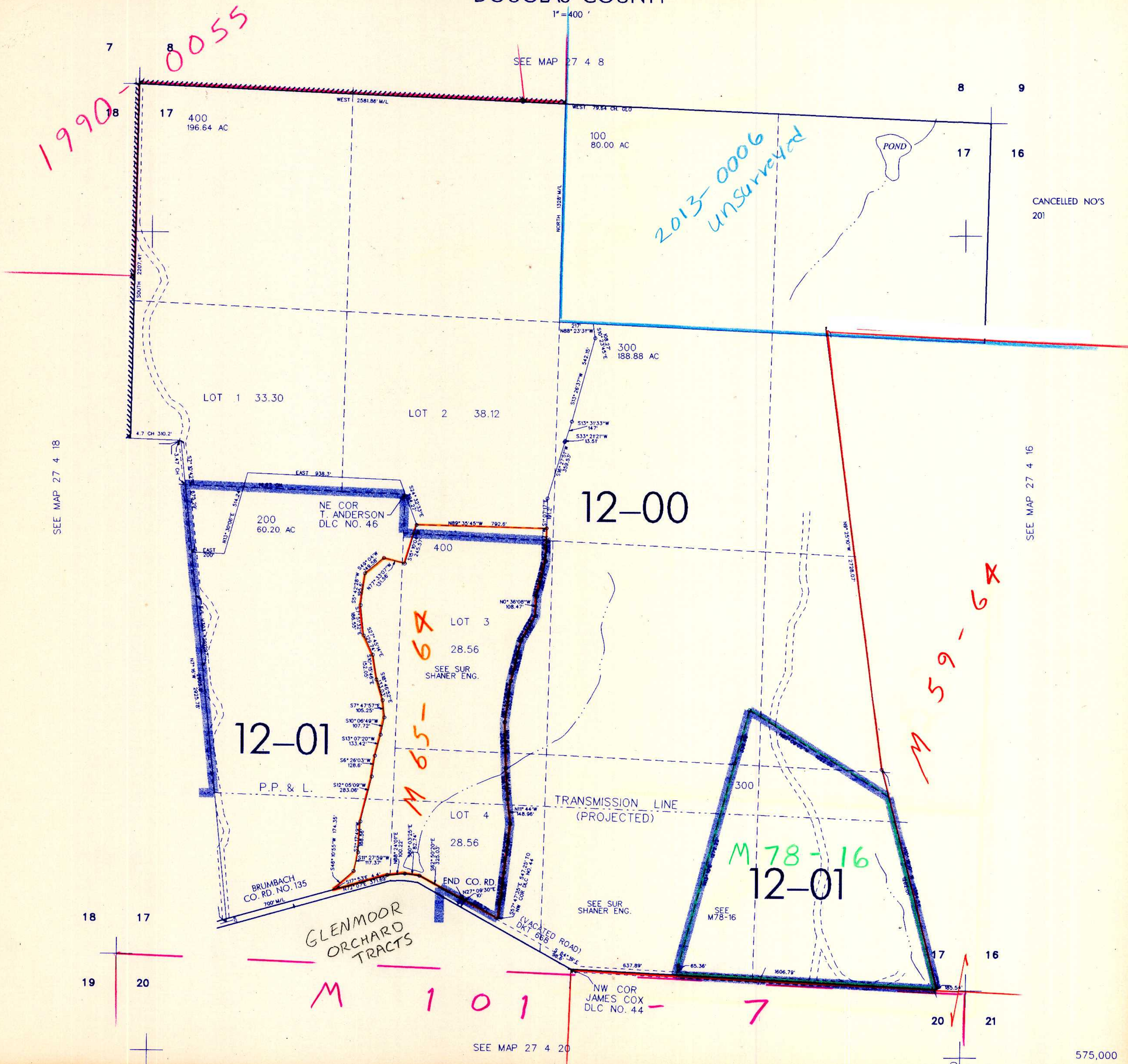
THIS MAP WAS PREPARED FOR ASSESSMENT PURPOSE ONLY

SEC. 17 T.27S. R.4 W W.M. DOUGLAS COUNTY

REVISED ON 11-19-01

27 4 17

1"=400'



1990

0055

2013-0006
unsurveyed

12-00

12-01

M 78-16
12-01

M 59-6A

M 101

SEE MAP 27 4 18

SEE MAP 27 4 16

SEE MAP 27 4 20

CANCELLED NO'S
201

575,000

4,205,000

27 4 17
12/01 JP