

THIS MAP WAS PREPARED FOR ASSESSMENT PURPOSE ONLY.

Upper Left:
123°10'24"W 43°13'48"N
4208987E 581089N ft

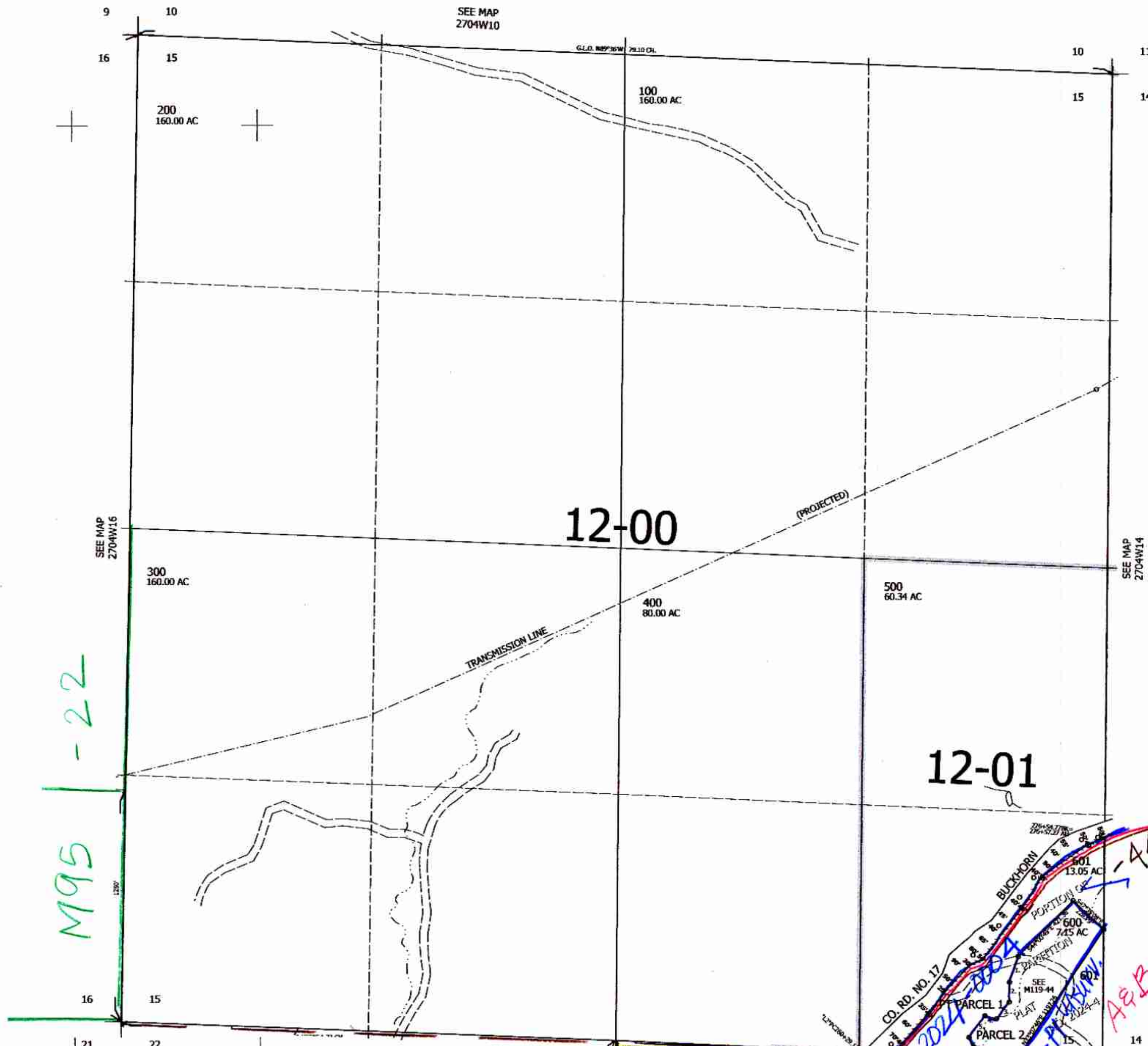
SEC.15 T.27S. R.04W. W.M.
DOUGLAS COUNTY
1" = 400'

Date Exported 2024-01-22

Z70415

CANCELLED NOS:

- PARCEL 600
1. S17°51'09"W 146.87'
 2. S00°34'23"W 108.10'
 3. S36°33'00"W 113.02'
 4. N75°08'05"W 63.83'
 5. S36°40'59"W 144.36'
 6. S20°15'06"E 101.14'
 7. S65°37'43"W 182.63'
 8. S50°27'46"W 55.24'



M95 -22

M119-44

M14-42

M
2000-0007

A&B

1/2024
scw

270415

Lower Right:
123°8'35"W 43°12'42"N
4216836E 574133N ft