

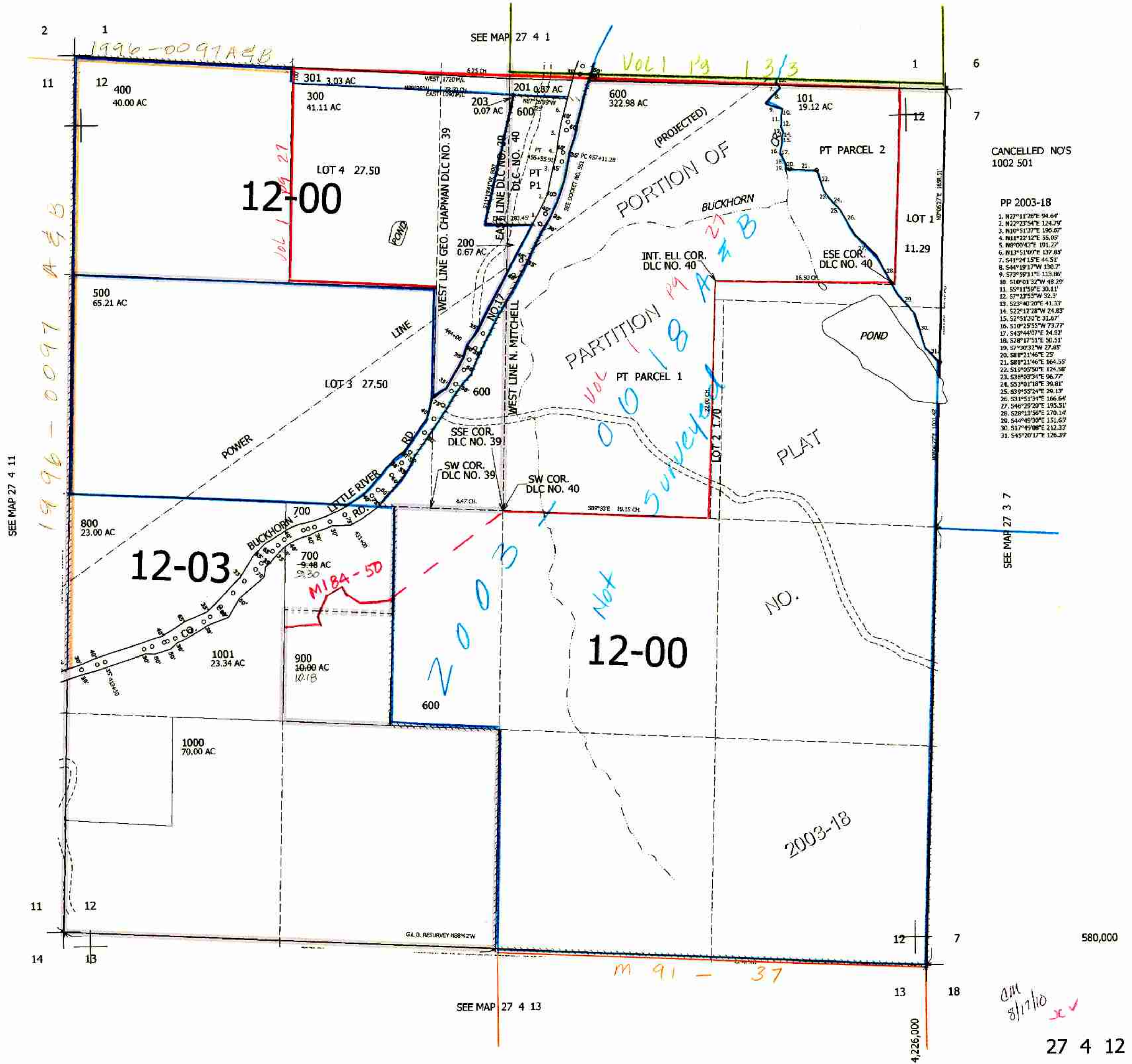
THIS MAP WAS PREPARED FOR
ASSESSMENT PURPOSE ONLY.

SEC.12 T.27S. R.4W. W.M.
DOUGLAS COUNTY

1" = 400'

REVISED ON
4-19-10

27 4 12



CANCELLED NO'S
1002 501

- PP 2003-18
1. N27°11'28"E 94.64'
 2. N22°23'54"E 124.79'
 3. N10°51'37"E 196.67'
 4. N11°22'12"E 55.05'
 5. N8°00'43"E 191.27'
 6. N13°51'09"E 137.85'
 7. S41°24'15"E 44.51'
 8. S44°19'17"W 130.7'
 9. S73°59'11"E 113.86'
 10. S10°01'32"W 48.29'
 11. S5°11'59"E 30.11'
 12. S7°23'53"W 32.9'
 13. S23°40'20"E 41.33'
 14. S23°12'28"W 24.83'
 15. S2°51'30"E 31.67'
 16. S10°25'55"W 73.77'
 17. S43°44'07"E 24.82'
 18. S28°17'51"E 50.51'
 19. S7°30'32"W 27.89'
 20. S88°21'46"E 25'
 21. S88°21'46"E 164.55'
 22. S19°05'50"E 124.58'
 23. S36°03'34"E 96.77'
 24. S53°01'18"E 39.81'
 25. S39°55'34"E 29.13'
 26. S31°51'34"E 166.64'
 27. S46°29'20"E 195.51'
 28. S28°13'56"E 270.14'
 29. S44°49'30"E 151.65'
 30. S17°49'08"E 212.33'
 31. S45°20'17"E 126.39'

SEE MAP 27 3 7

580,000

am
8/17/10

27 4 12