

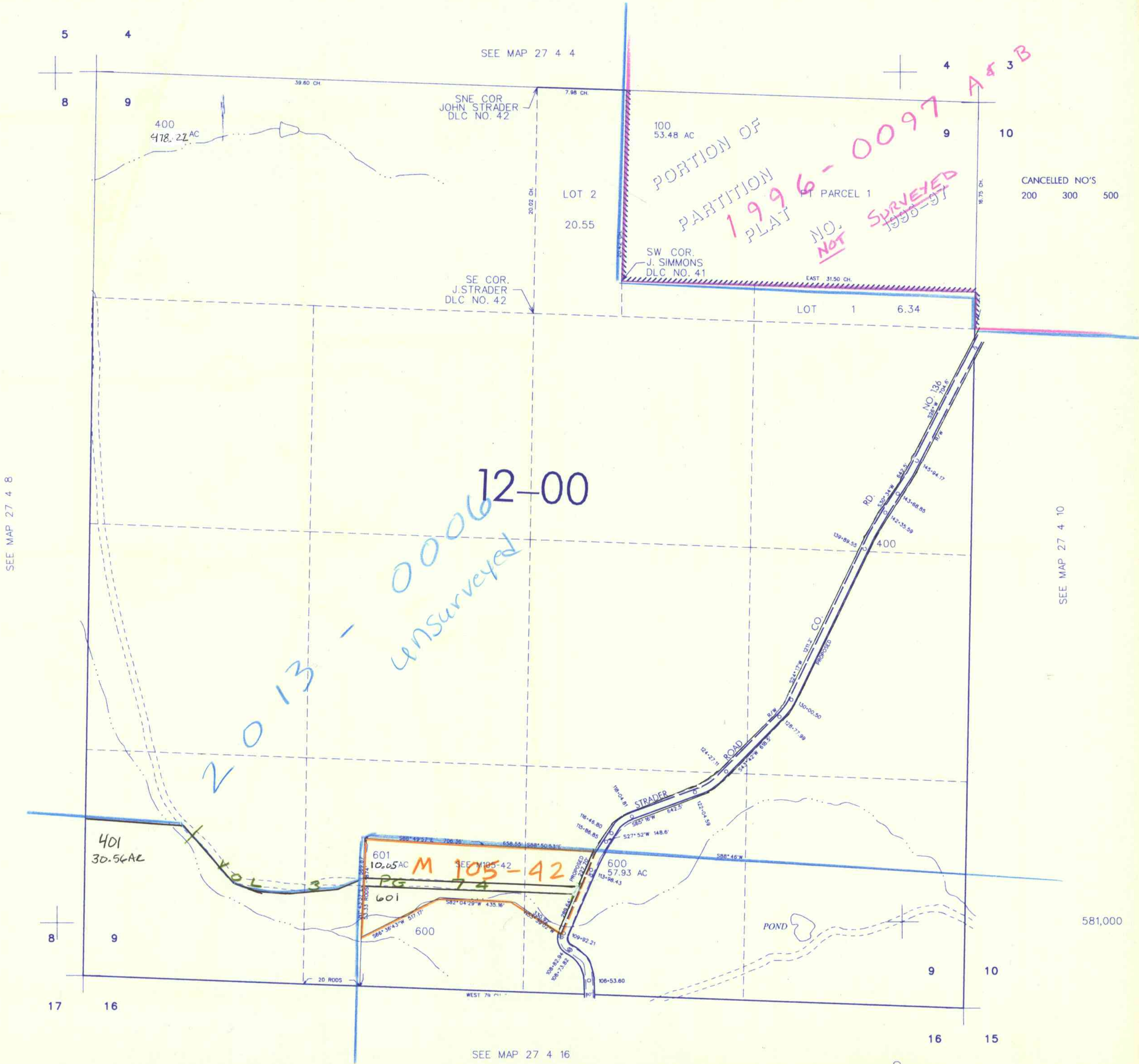
THIS MAP WAS PREPARED FOR ASSESSMENT PURPOSE ONLY

SEC. 9 T.27S. R.4 W W.M. DOUGLAS COUNTY

REVISED ON 12-30-02

27 4 9

1" = 400'



SEE MAP 27 4 8

SEE MAP 27 4 10

SEE MAP 27 4 16

CANCELLED NO'S
200 300 500

12-00
2013 - 0006
unsurveyed

M 105-42
PG 74

4,210,000

27 4 9
1/2003 JPH