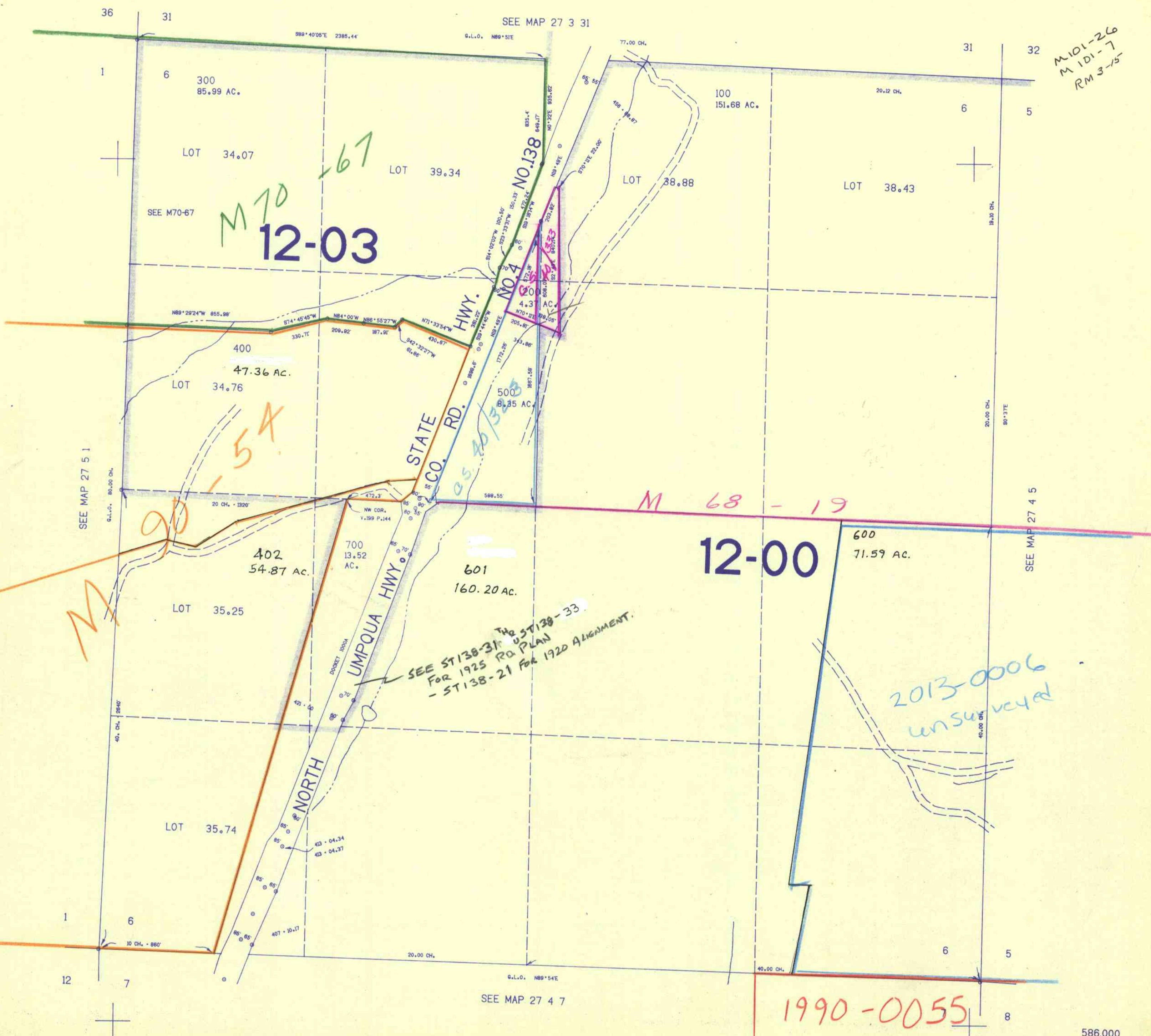


THIS MAP WAS PREPARED FOR ASSESSMENT PURPOSE ONLY.

SECTION 6 T.27S. R.4W. W.M.
DOUGLAS COUNTY

27 4 6

1"=400'



M 101-26
M 101-7
RM 3-75

SEE ST 138-31, 45, 51, 38-33
FOR 1925 ROAD PLAN
- ST 138-21 FOR 1922 ALIGNMENT.

2013-0006
unsurveyed

1990-0055

586.000

27 4 6

6/85