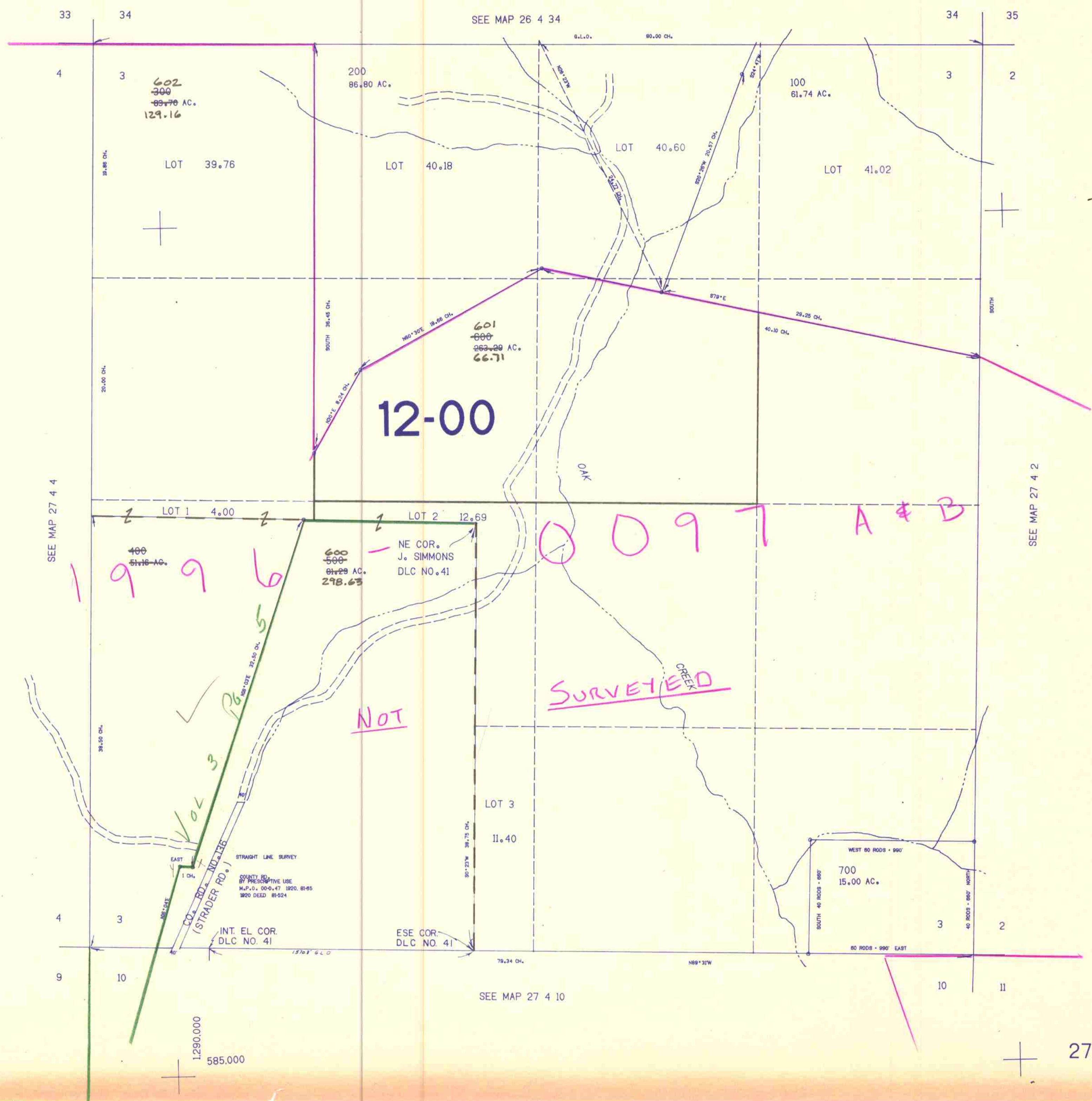


SECTION 3 T.27S. R.4W. W.M.
DOUGLAS COUNTY

27 4 3

THIS MAP WAS PREPARED FOR
ASSESSMENT PURPOSE ONLY.

1"=400'



SEE MAP 27 4 4

SEE MAP 27 4 2

SEE MAP 27 4 10

1,290,000
585,000

27 4 3

6/15/28