

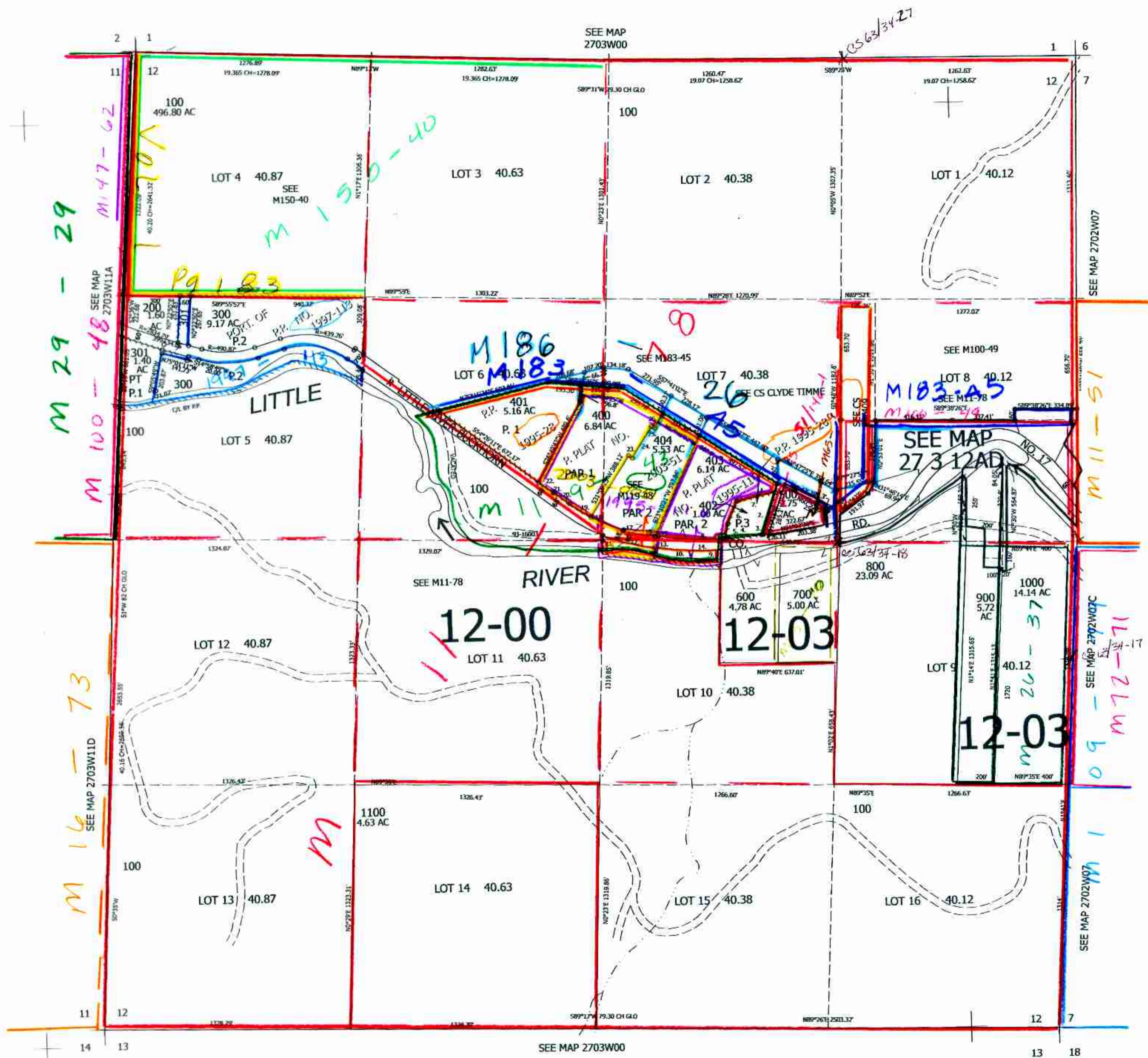
SEC.12 T.27S. R.03W. W.M. DOUGLAS COUNTY 1" = 400'

CANCELLED NOS: 101 102 103 104 105 106

THIS MAP WAS PREPARED FOR ASSESSMENT PURPOSE ONLY.

Upper Left: 123°05'7"W 43°14'41"N 4251073E 585183N ft

- PP 1095-28 A 116
- 1. S15°29'32"W 80.3'
- 2. S15°29'32"W 236.14'
- 3. S89°27'23"W 10.27'
- 4. LC=S83°24'41"W 193.82'
- A=193.91
- 5. N0°13'11"E 81.89'
- 6. N21°38'06"E 132.77'
- 7. N77°02'31"E 211.01'
- 8. LC=S89°37'33"E 262.77'
- A=262.99
- 9. N0°42'E 88.53'
- 10. S84°27'43"E 642.53'
- 11. S0°22'39"W 102.39'
- 12. LC=N77°13'36"W 287.47'
- A=288.5
- 13. N85°37'05"W 117.11'
- 14. LC=N89°12'24"W 242.85'
- A=243.01
- 15. N85°37'05"W 117.11'
- 16. LC=N80°08'07"W 176.75'
- A=172.02
- 17. N15°20'51"E 5'
- 18. LC=N64°32'40"W 322.9'
- A=324.58'
- 19. N54°26'11"W 105.46'
- 20. S39°33'49"W 5'
- 21. N54°26'11"W 96.49'



one 9/14/09 JC ✓