

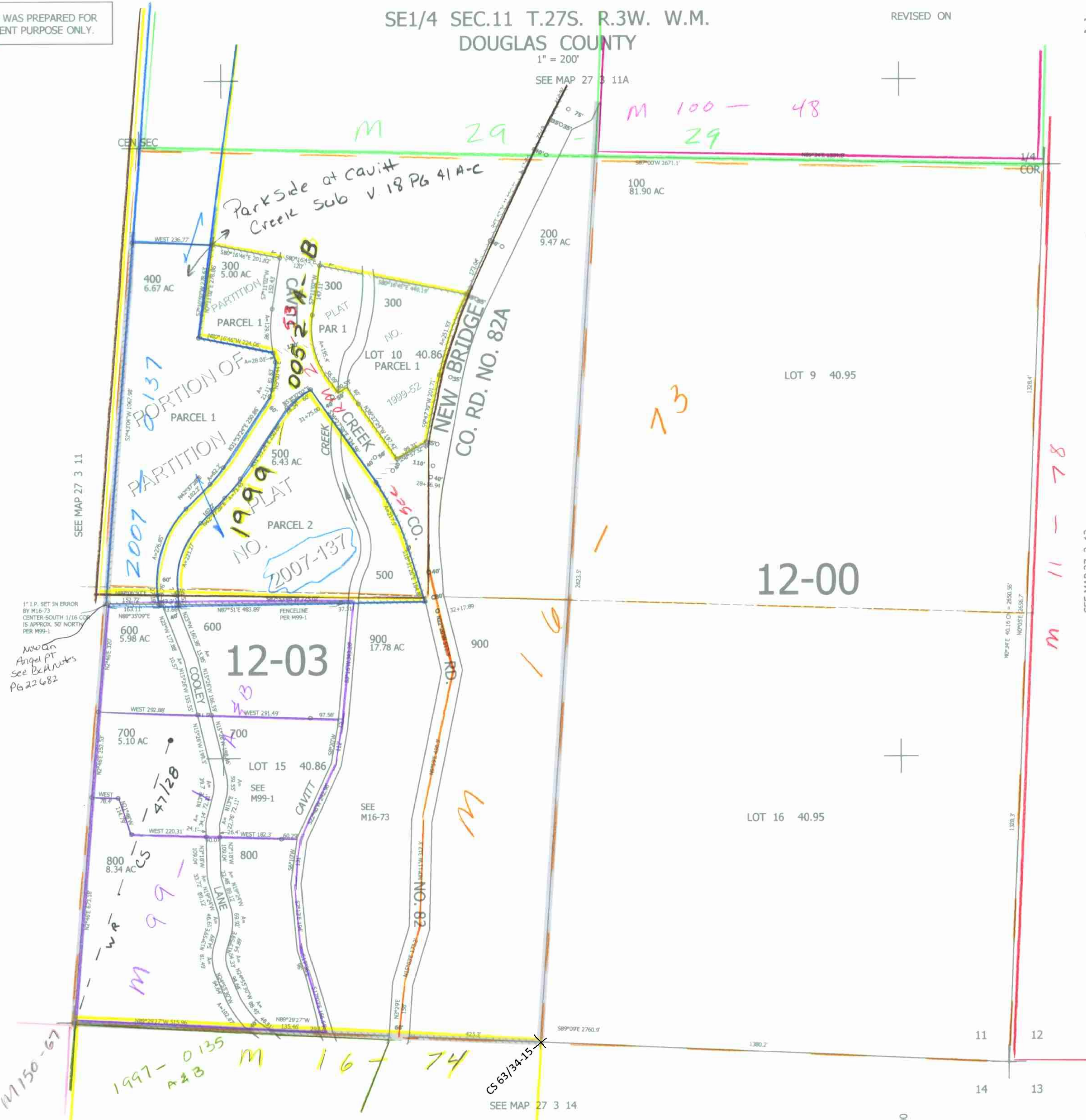
THIS MAP WAS PREPARED FOR ASSESSMENT PURPOSE ONLY.

SE1/4 SEC.11 T.27S. R.3W. W.M. DOUGLAS COUNTY

REVISED ON

27 3 11D

1" = 200'
SEE MAP 27 3 11A



1" I.P. SET IN ERROR BY M16-73 CENTER-SOUTH 1/16 COR IS APPROX. 50' NORTH PER M99-1
Now an Angel Pt See Bldg Notes Pg 22 & 82

CANCELLED NO'S

SEE MAP 27 3 12

580,000

CM 8/19/10 JCV

SEE MAP 27 3 14

4,252,000

27 3 11D