

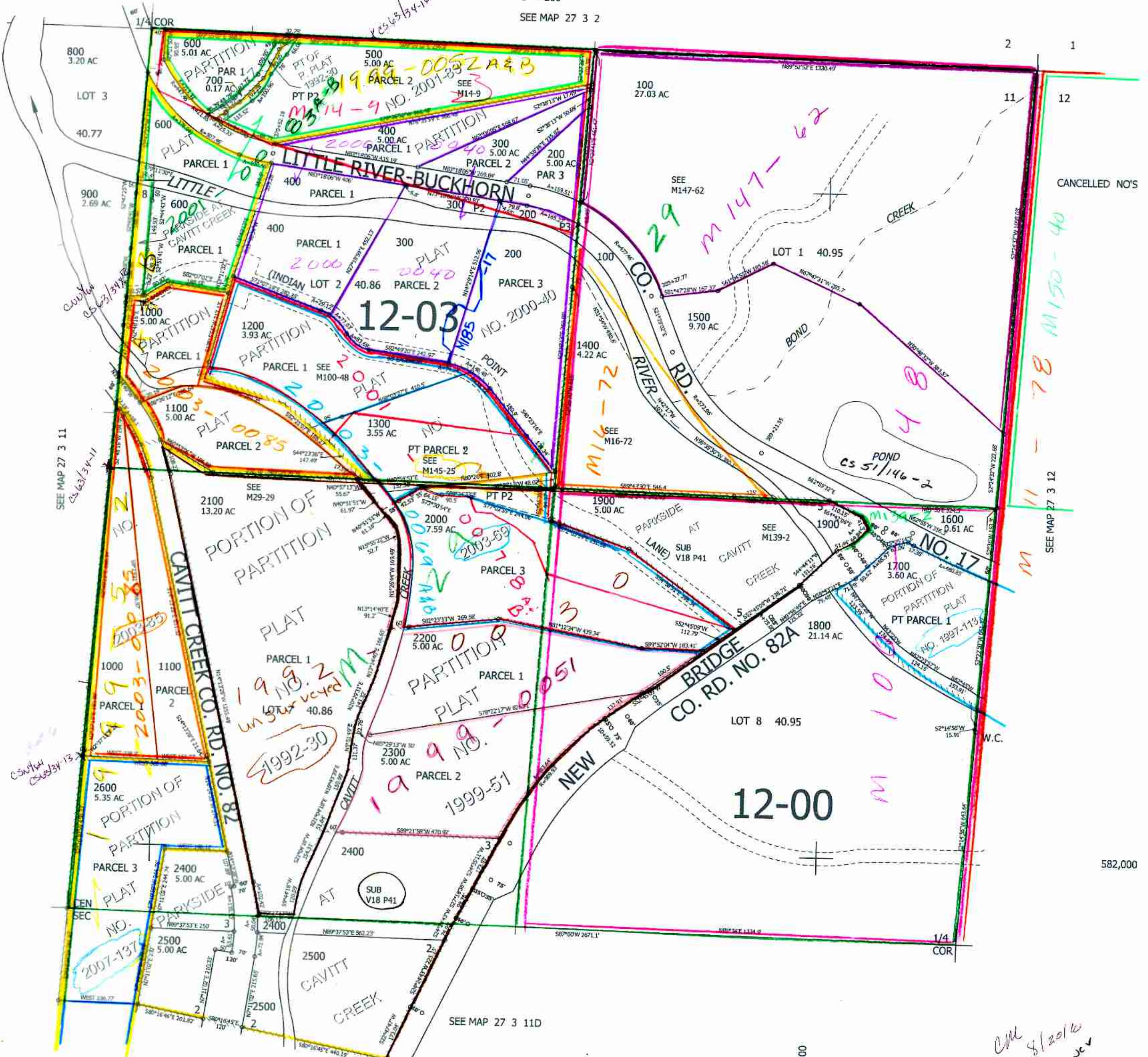
THIS MAP WAS PREPARED FOR ASSESSMENT PURPOSE ONLY.

NE1/4 SEC.11 T.27S. R.3W. W.M. DOUGLAS COUNTY

REVISED ON

27 3 11A

1" = 200'  
SEE MAP 27 3 2



CANCELLED NO'S

SEE MAP 27 3 12

582,000

SEE MAP 27 3 11D

4,252,000

*cm 8/20/16*

27 3 11A