

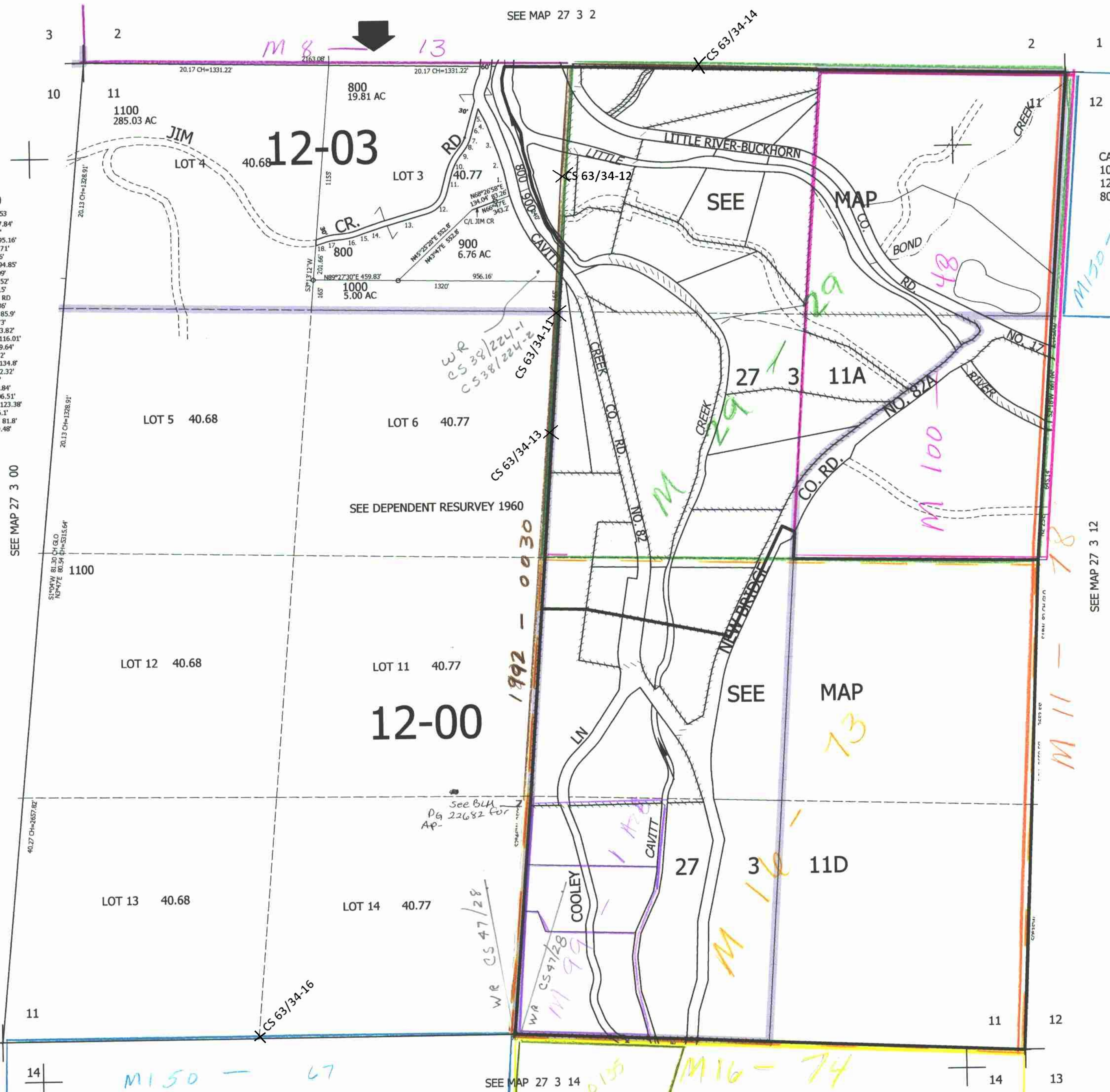
SEC.11 T.27S. R.3W. W.M.  
DOUGLAS COUNTY  
1" = 400'

REVISED ON  
8-13-10

27 3 11

THIS MAP WAS PREPARED FOR  
ASSESSMENT PURPOSE ONLY.

PARCEL 800  
PER INST 2007-13353  
1. N14°24'59"W 137.84'  
2. A=95.24' R=686.2'  
LC=N18°23'33"W 95.16'  
3. N22°22'07"W 143.71'  
4. A=94.97' R=542.96'  
LC=N27°22'46"W 94.85'  
5. N27°52'40"W 31.09'  
6. S14°00'00"W 148.52'  
7. N77°38'16"W 15.15'  
TO C/L JIM CREEK RD  
8. A=86.51' R=209.36'  
LC=S24°11'58"W 85.9'  
9. S36°02'13"W 32.73'  
10. A=116.77' R=293.82'  
LC=S24°39'06"W 116.01'  
11. S13°15'58"W 109.64'  
12. A=141' R=136.42'  
LC=S42°52'32"W 134.8'  
13. S72°29'06"W 252.32'  
14. S70°04'47"W 90'  
15. S67°34'07"W 37.84'  
16. A=123.86' R=406.51'  
LC=S76°17'50"W 123.38'  
17. A=82.06' R=296.1'  
LC=S77°05'11"W 81.8'  
18. S69°08'50"W 39.48'



CANCELLED NO'S  
100 THRU 700  
1200 THRU 2301  
801

SEE MAP 27 3 12

SEE MAP 27 3 14

CM  
8/20/10  
JCV  
579,000

27 3 11

4,252,000