

SECTION 7 T.27S. R.3W. W.M.
DOUGLAS COUNTY

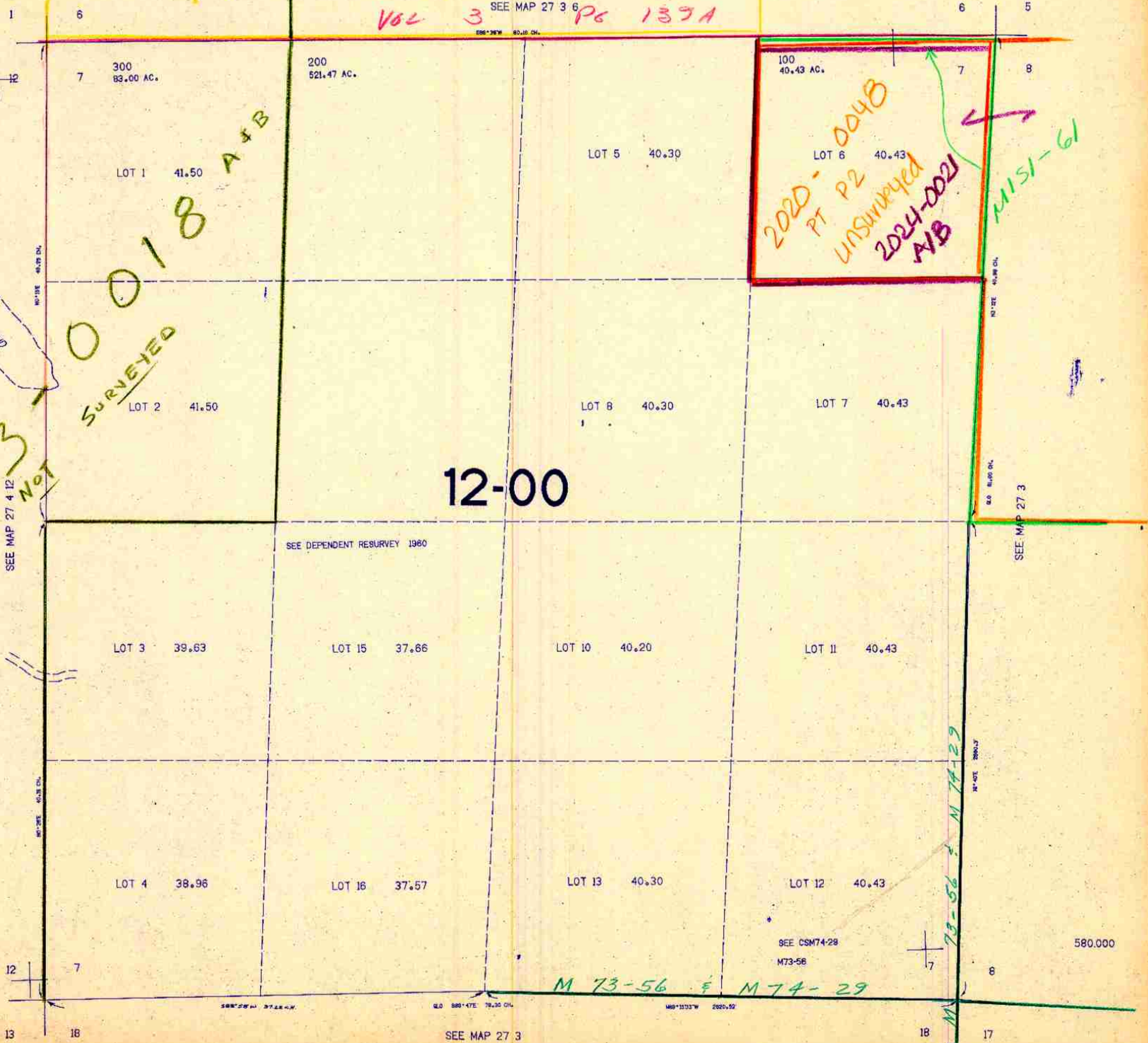
27 3 7

THIS MAP WAS PREPARED FOR
ASSESSMENT PURPOSE ONLY.

1"=400'

146-27

Vol 3 SEE MAP 27 3 6 Pg 137A



00018 A+B
SURVEYED

2003
SEE MAP 27 4 12
NOT

12-00

SEE DEPENDENT RESURVEY 1960

SEE CSM74-28
M73-56

M 73-56 & M 74-29

SEE MAP 27 3

SEE MAP 27 3

27 3 7

5/28