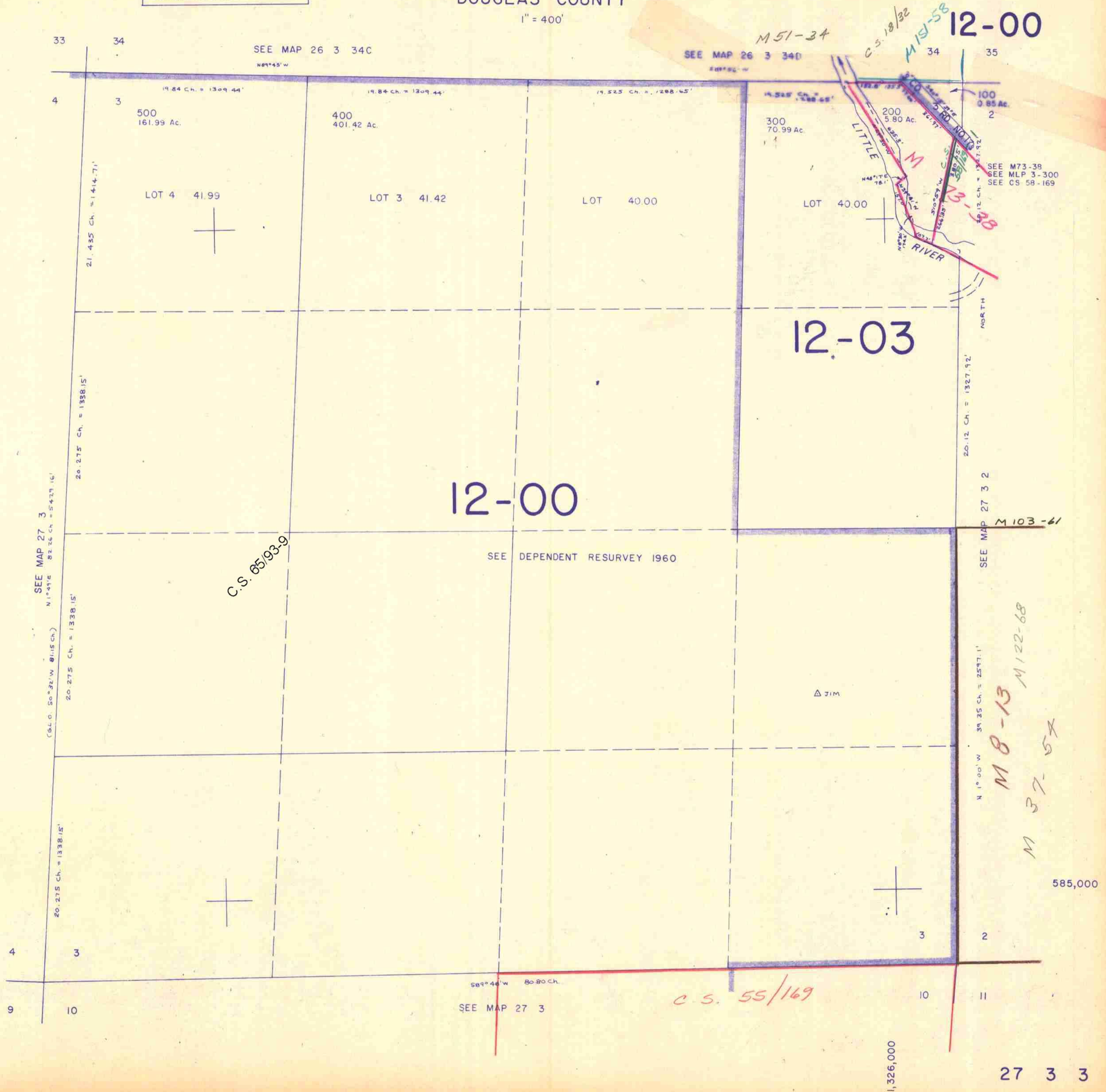


THIS MAP WAS PREPARED FOR  
ASSESSMENT PURPOSE ONLY.

SECTION 3 T.27S. R.3W. W.M.  
DOUGLAS COUNTY

1" = 400'

27 3 3



12-00

12-03

12-00

SEE DEPENDENT RESURVEY 1960

△ JIM

585,000

1,326,000

27 3 3

5/85/28