

THIS MAP WAS PREPARED FOR ASSESSMENT PURPOSE ONLY.

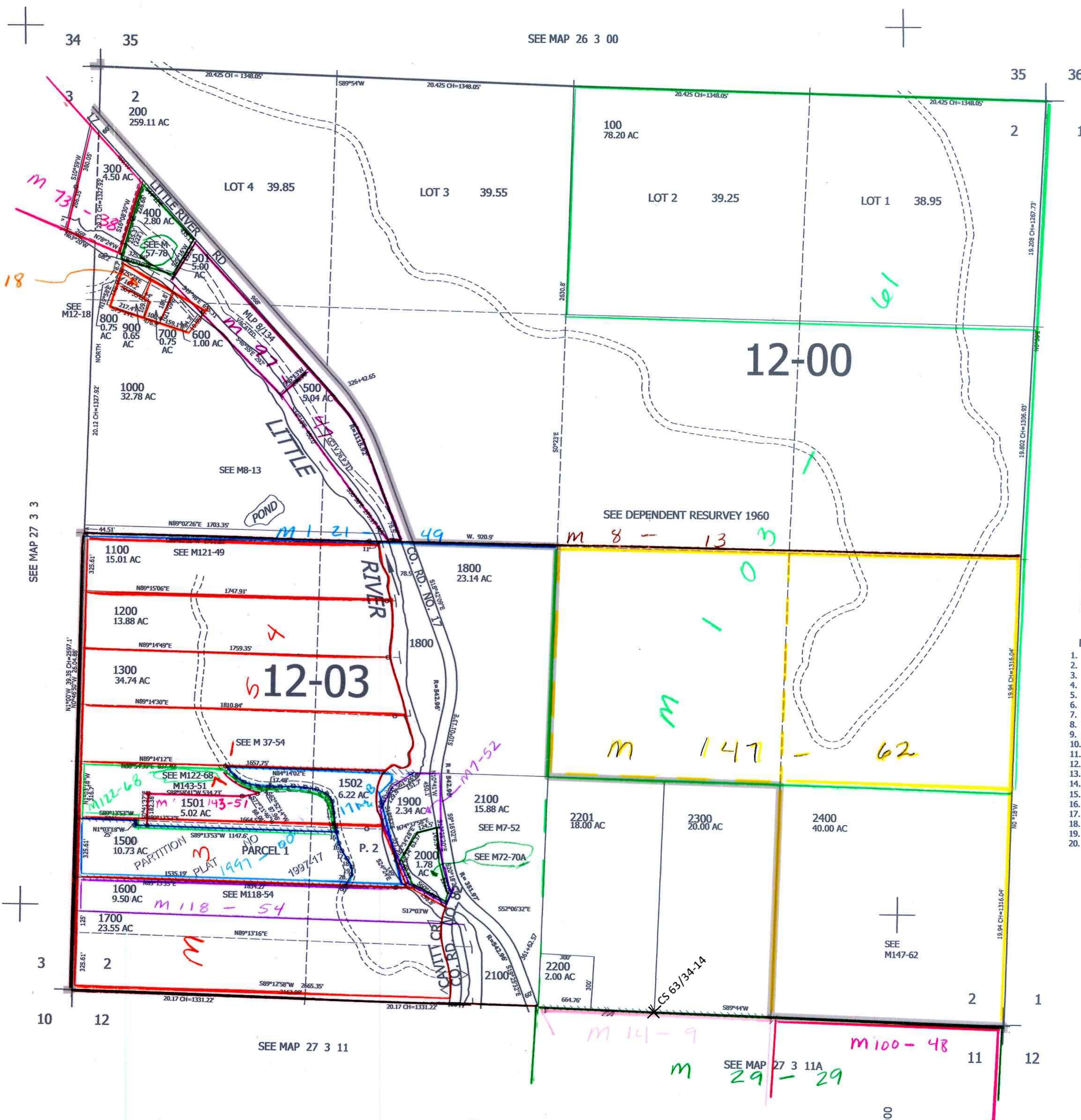
SEC.2 T.27S. R.3W. W.M. DOUGLAS COUNTY

REVISED ON 7-8-19

27 3 2

1" = 400'

SEE MAP 26 3 00



CANCELLED NO'S
1001 1400 2201M1
2300M1 1503 1002

SEE MAP 27 3 00

- PARCEL 1502
1. S45°46'21"E 73.97'
 2. S62°19'37"E 62.13'
 3. S75°32'08"E 81.5'
 4. S89°01'02"E 58.86'
 5. N84°14'02"E 67.88'
 6. N84°44'17"E 74.55'
 7. S87°19'04"E 69'
 8. S81°28'47"E 65.88'
 9. S69°31'29"E 61.67'
 10. S37°20'42"E 54.06'
 11. S8°01'39"E 64.42'
 12. S13°25'32"E 74.77'
 13. S13°59'47"E 10.95'
 14. S13°59'47"E 25.68'
 15. S13°46'44"E 63.75'
 16. S22°00'33"E 46.65'
 17. S37°36'55"E 52.03'
 18. S31°56'34"E 56.19'
 19. S2°41'22"W 43.61'
 20. S27°11'07"W 69.31'

585,000

CM
8/20/10
JCV

27 3 2