

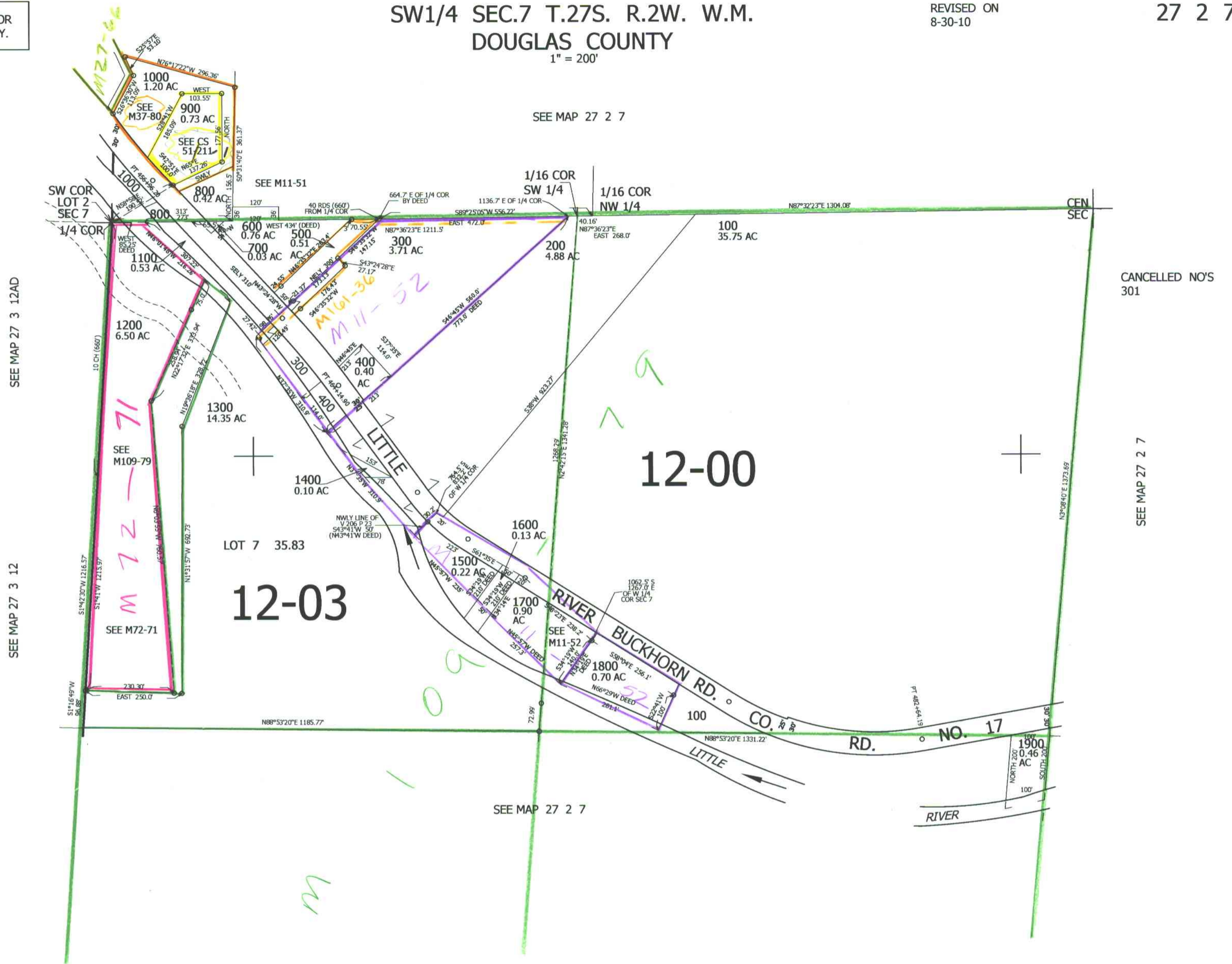
THIS MAP WAS PREPARED FOR ASSESSMENT PURPOSE ONLY.

SW1/4 SEC.7 T.27S. R.2W. W.M. DOUGLAS COUNTY

REVISED ON 8-30-10

27 2 7C

1" = 200'



SEE MAP 27 3 12AD

SEE MAP 27 3 12

SEE MAP 27 2 7

CANCELLED NO'S 301

SEE MAP 27 2 7

12	7
13	18

1/4 COR
4,260,000

579,000

JC ✓
CME
9/20/10

27 2 7C