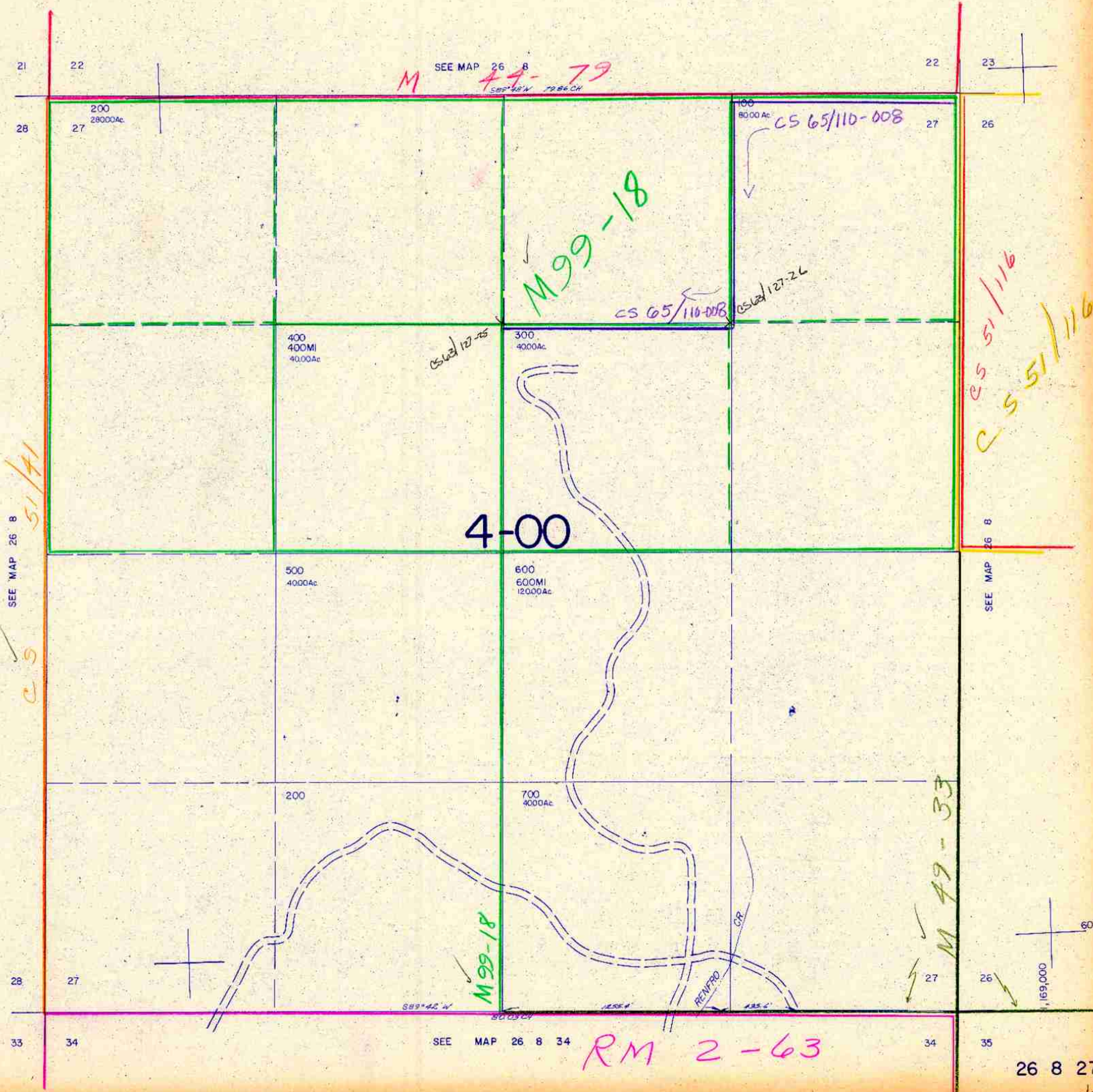


SECTION 27 T.26S. R.8 W. W.M.
DOUGLAS COUNTY

26 8 27

THIS MAP WAS PREPARED FOR
ASSESSMENT PURPOSE ONLY.

1" = 400'



SEE MAP 26 8
51/41
C.S.

M SEE MAP 26 8
44-79
S89°42'W 79.86 CH

M99-18

4-00

M99-18

RM 2-63

M 49-33

C.S. 51/116
C.S. 51/116

26 8 27

1/85/2