

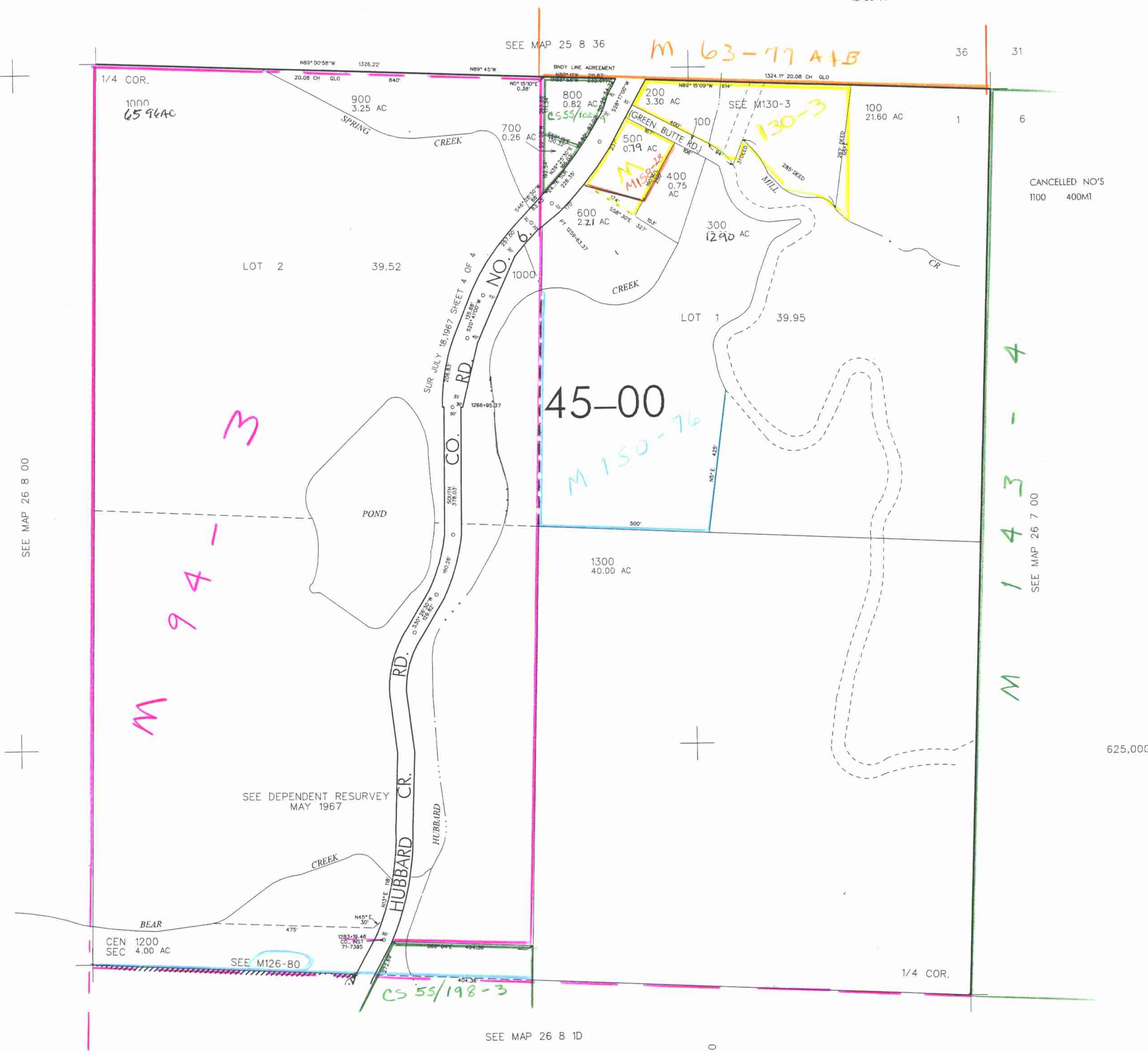
NEV4 SEC. 11 T.26S. R. 8W W.M.
DOUGLAS COUNTY

26 8 1A

THIS MAP WAS PREPARED FOR
ASSESSMENT PURPOSE ONLY

1"=200'

REVISED ON
12-30-99



CANCELLED NO'S
1100 400M1

M 143-4

M 94-1

45-00

M 150-76

M 63-77 A+B

M 130-3

M 150-23

M

SEE M126-80

CS 55/198-3

SEE MAP 26 8 00

SEE MAP 26 7 00

SEE MAP 26 8 1D

4,100,000

26 8 1A

4/11