

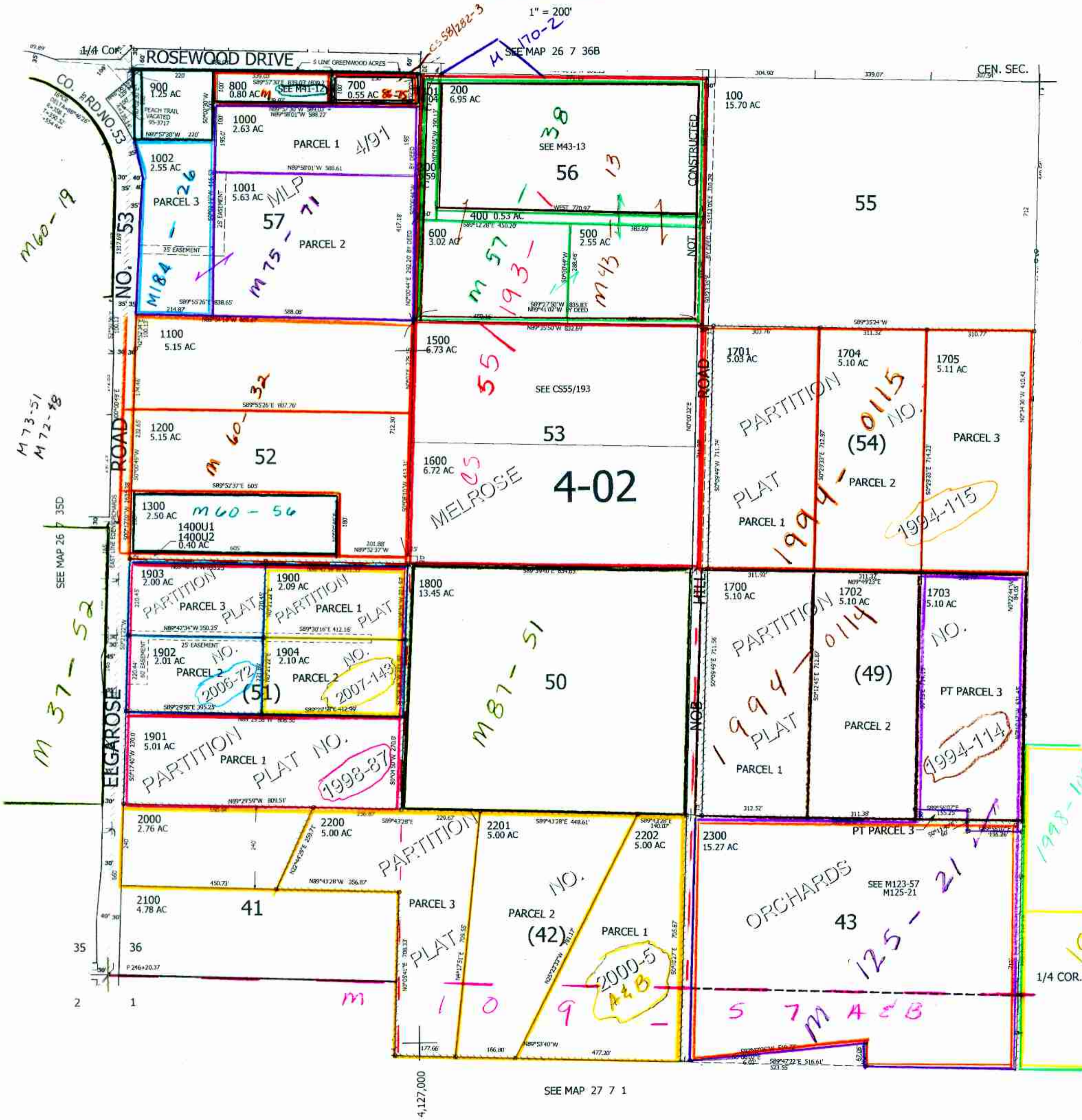
THIS MAP WAS PREPARED FOR
ASSESSMENT PURPOSE ONLY.

SW1/4 SEC.36 T.26S. R.7W. W.M.
DOUGLAS COUNTY

REVISED ON
11-17-08

26 7 36C

CANCELLED NO'S
2301 2302 1706
1700M1 1701M1 1702M1
1703M1 1704M1 1705M1
2300M1 2001 701



SEE MAP 26 7 36D

SEE MAP 27 7 1

26 7 36C

594,000
594,000

19/3/08