

THIS MAP WAS PREPARED FOR ASSESSMENT PURPOSE ONLY.

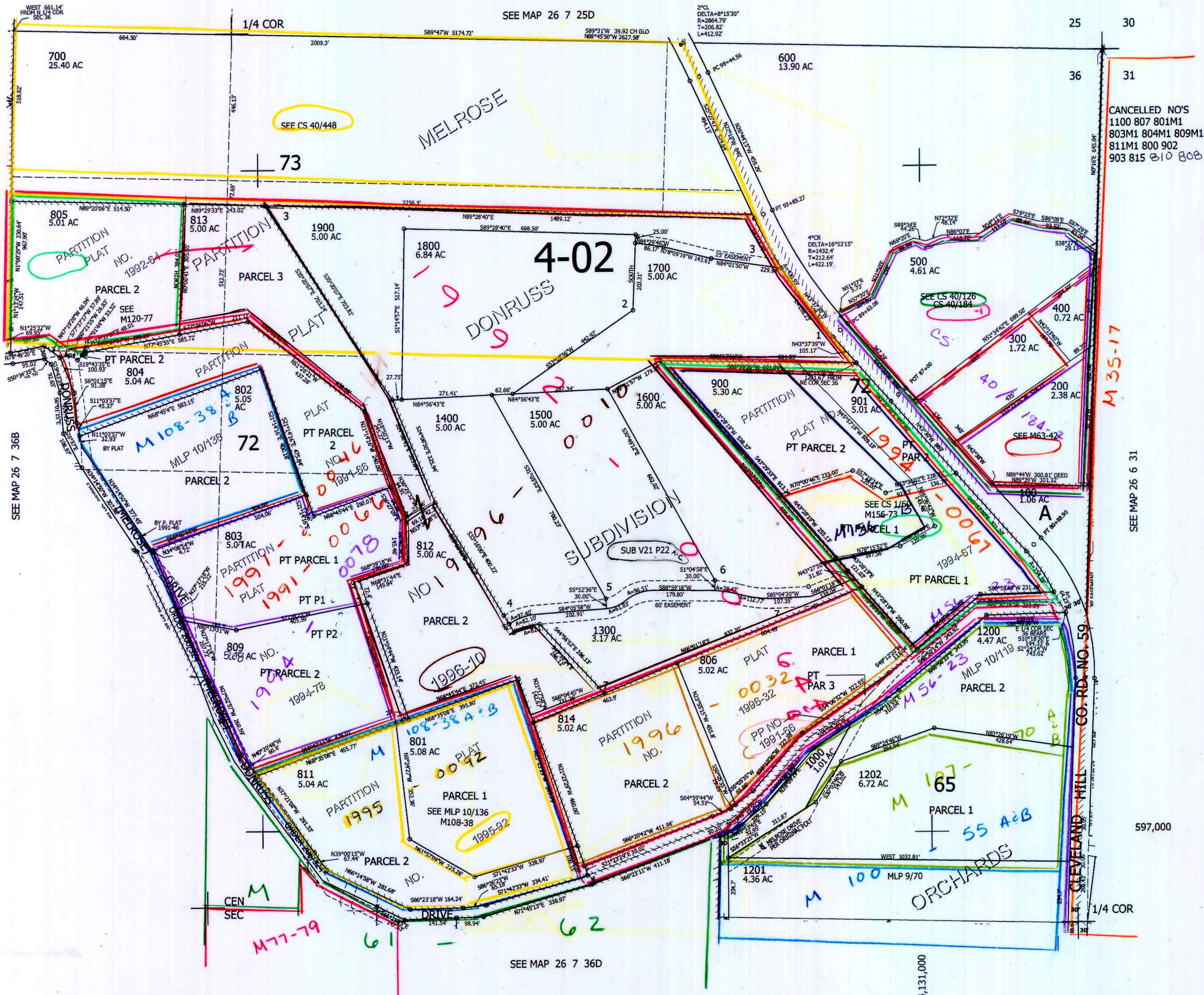
NE1/4 SEC.36 T.26S. R.7W. W.M. DOUGLAS COUNTY

REVISED ON 10-27-14

26 7 36A

1" = 200'

SEE MAP 26 7 25D



CANCELLED NO'S
1100 807 801M1
803M1 804M1 809M1
811M1 800 902
903 815 210 808

M 35-17

SEE MAP 26 6 31

26 7 36A

SC 8/2004

rw